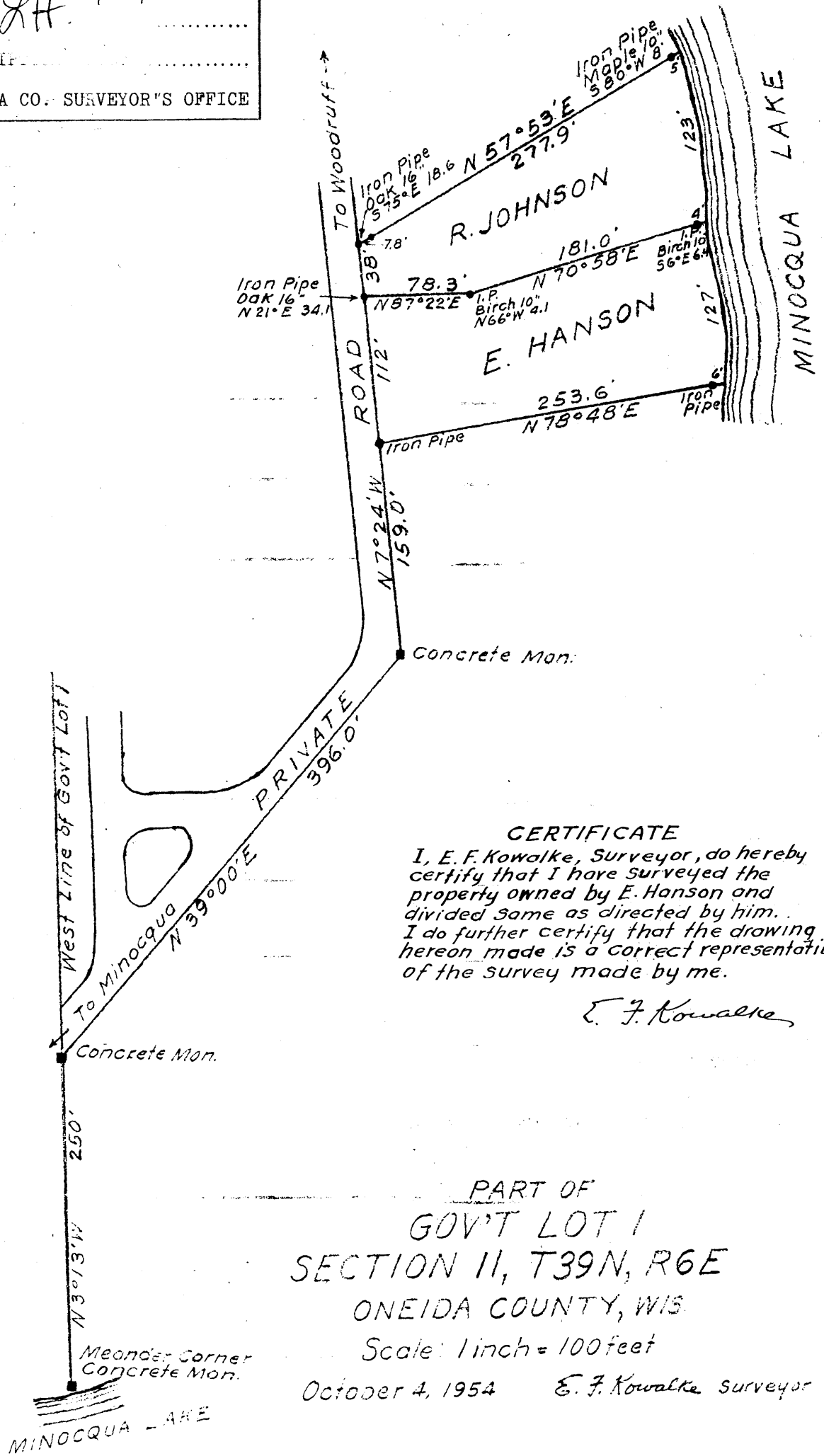


MAP # **1.2639**  
 DATE BY *8/20/09*  
 BY *LH*  
 DESCRIPTION  
 ONEIDA CO. SURVEYOR'S OFFICE



**CERTIFICATE**  
 I, E. F. Kowalke, Surveyor, do hereby certify that I have surveyed the property owned by E. Hanson and divided same as directed by him. I do further certify that the drawing hereon made is a correct representation of the survey made by me.

*E. F. Kowalke*

PART OF  
 GOV'T LOT 1  
 SECTION 11, T39N, R6E  
 ONEIDA COUNTY, WIS.

Scale: 1 inch = 100 feet  
 October 4, 1954 E. F. Kowalke Surveyor