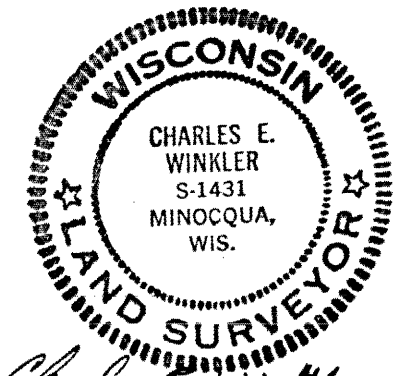
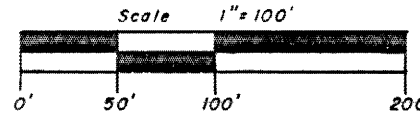


RECEIVED & FILED # **L264**
 Oneida County Surveyor's Office
 Date... **FEB. 14, 1989**
 By **MJM**
 OCS Area #

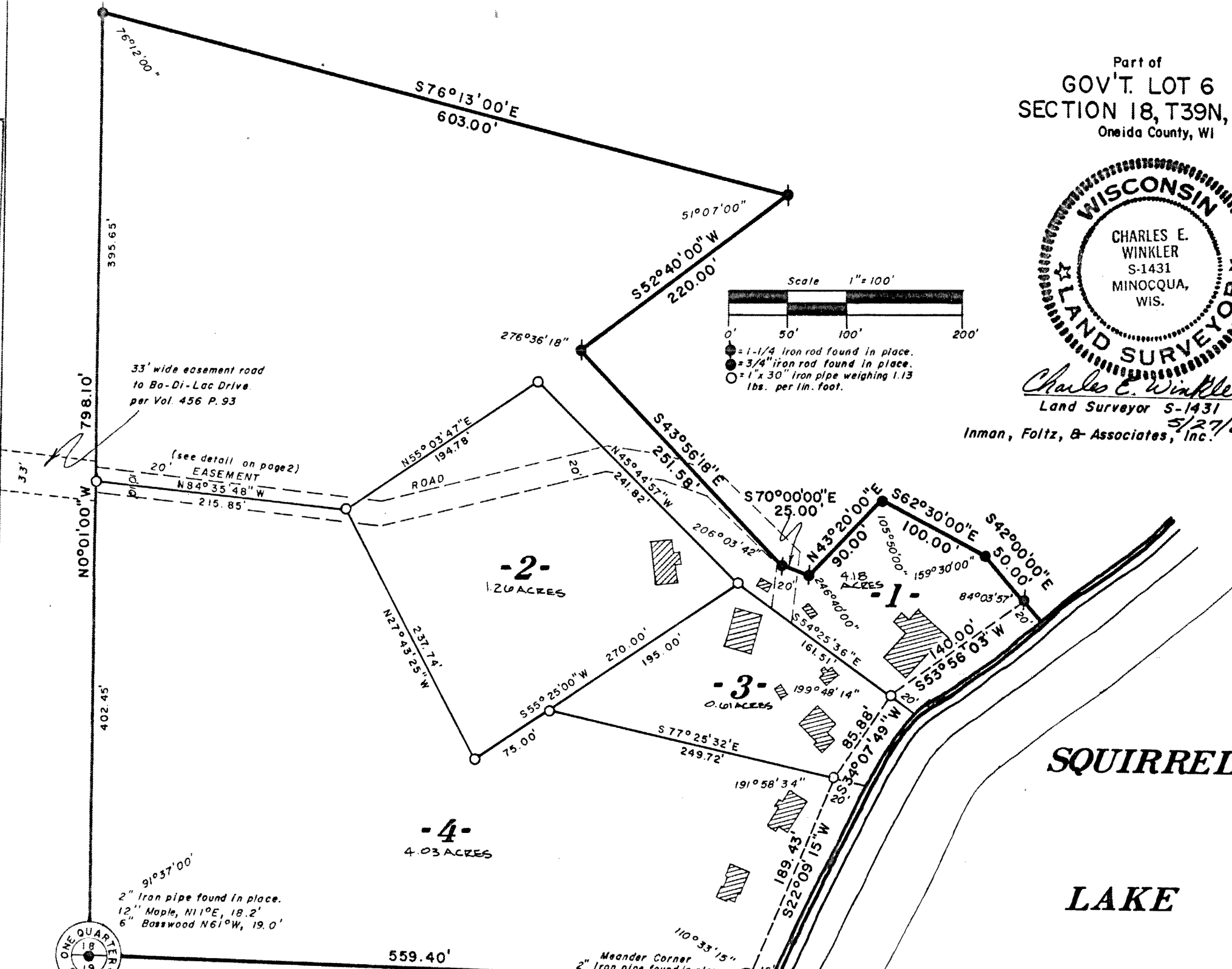
Part of
GOV'T. LOT 6
SECTION 18, T39N, R5E
 Oneida County, WI



Charles E. Winkler
 Land Surveyor S-1431
 5/27/80
 Inman, Foltz, & Associates, Inc.



- = 1-1/4" iron rod found in place.
- = 3/4" iron rod found in place.
- = 1" x 30" iron pipe weighing 1.13 lbs. per lin. foot.



Bearings Solar L264

