

LAND CORNER PRESERVATION RECORD

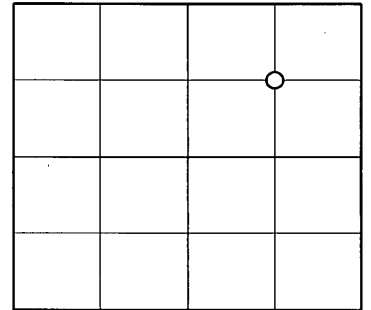
It is the purpose of this record to preserve the location of a survey or land corner monument that may be disturbed, removed or inaccessible due to road construction or other activity.

ROAD CONSTRUCTION

County: ONEIDA	City, Village, Town: TOWN OF SCHOEPKE	Section: 32	Town: 35 N	Range 11 E
--------------------------	---	-----------------------	----------------------	----------------------

Describe what was found, its location and origin. If known, describe if the monument found is a 1/16 corner or other subdivisional corner; a monument called for in a deed; a monument shown on a survey map or plat etc and in what GL or 1/4 - 1/4 section or subdivision the monument is located.

Approximate Location within Section. 32

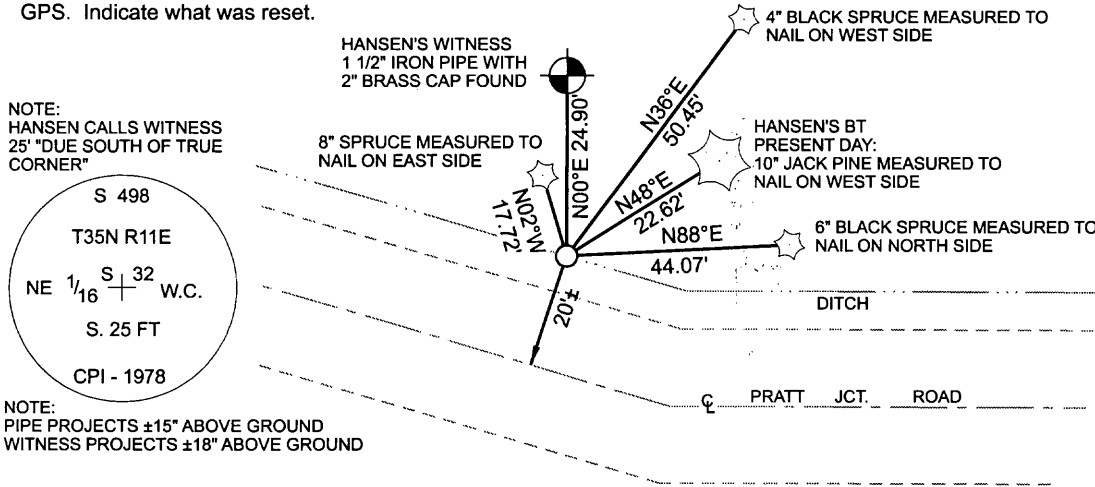


11/15/1978 - PHILLIP T. HANSEN SET, 1 1/2" IRON PIPE AS NOTED ON CERTIFIED LAND CORNER RESTORATION FORM 3511323010.

07/09/2009 - I FOUND A 1 1/2" DIA. IRON PIPE WITH TWO OF HANSEN'S WITNESSES INTACT, VERIFIED HIS TIES AND SET NEW WITNESSES AS SHOWN BELOW.

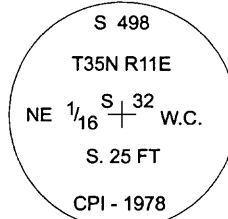
3511323010

Plan view map of landmark monument location with bearing and distance ties to a minimum of four described witness or reference monuments of concrete, natural stone, metal, live bearing trees or equivalent material or indicate datum & coordinates if tied out using GPS. Indicate what was reset.



NORTH ↑
MAGNETIC BEARINGS

NOTE:
HANSEN CALLS WITNESS
25" DUE SOUTH OF TRUE
CORNER"



NOTE:
PIPE PROJECTS ±15' ABOVE GROUND
WITNESS PROJECTS ±18' ABOVE GROUND

ONEIDA CO. SUPERVISOR'S OFFICE

MAP # L2645

DATE FILED 9-18-09

BY [Signature]

DESCRIPTION FILED



PROFESSIONAL LAND SURVEYOR CERTIFICATE:

This land corner was referenced out in advance of road construction or other activity as an act of preserving survey evidence or monuments. This corner has not been tested for its accuracy during the course of this preservation. It is recommended that those using the corner position evaluate and verify it prior to use in a survey or other use.

I hereby certify that I am a duly licensed Professional Land Surveyor in the State of Wisconsin; that the location of this Survey or Land Corner was referenced by me or under my direct supervision and control and that the information shown on this record is true and correct to the best of my knowledge and belief.

Signature: [Handwritten Signature]

Date: 08/12/2009