

LAND PRESERVATION RECORD

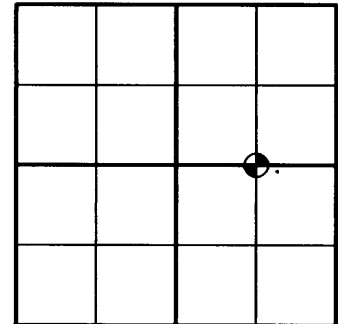
IT IS THE PURPOSE OF THIS RECORD TO PRESERVE THE LOCATION OF A SURVEY OR LAND CORNER MONUMENT THAT MAY BE DISTURBED, REMOVED OR INACCESSIBLE DUE TO ROAD CONSTRUCTION OR OTHER ACTIVITY.

COUNTY: ONEIDA	CITY, VILLAGE, TOWN: TOWN OF PELICAN	SECTION: 4	TOWN: 36 NORTH	RANGE: 9 EAST
--------------------------	--	----------------------	--------------------------	-------------------------

DESCRIBE WHAT WAS FOUND, IT'S LOCATION AND ORIGIN. IF KNOWN, DESCRIBE IF THE MONUMENT FOUND IS A 1/16 CORNER OR OTHER SUBDIVISIONAL CORNER; A MONUMENT CALLED FOR IN A DEED; A MONUMENT SHOWN ON A SURVEY MAPS OR PLAT, ETC., AND IN WHAT GOV'T LOT, 1/4-1/4 SECTION OR SUBDIVISION THE MONUMENT IS LOCATED.

SEPTEMBER 13, 2010 - CENTER EAST 1/16 CORNER LOCATION RESET WITH RAILROAD SPIKE IN THE INTERSECTION OF NORTH FAUST LAKE ROAD AND NORTH SHORE DRIVE. NORTHEAST AND SOUTHEAST TIES BY DULIN AS SHOWN ON SURVEY LANDMARK PRESERVATION RECORD L2395 WERE NOT FOUND. NORTHWEST AND SOUTHWEST TIES WERE FOUND IN GOOD CONDITION. CORNER RESET USING THESE TIES AND SECTION SUBDIVISION AS SHOWN BY STU FOLTZ ON ONEIDA COUNTY LAND INFORMATION OFFICE MAP No. C1844.

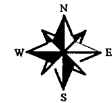
APPROXIMATE LOCATION WITHIN SECTION 4



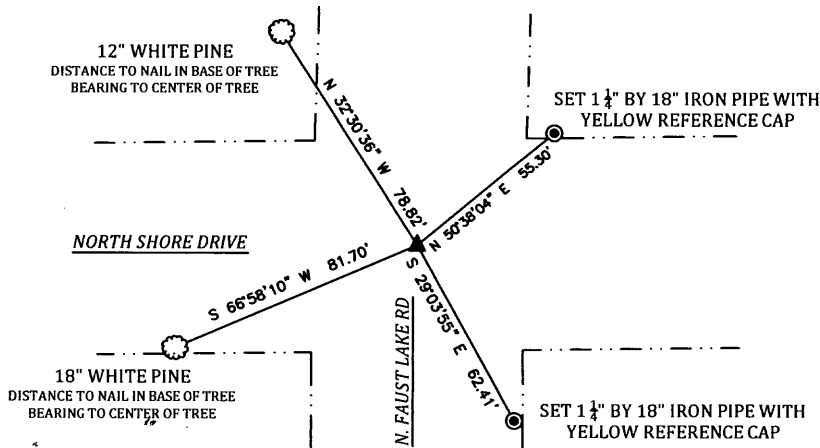
3609042010

MAP # **L 2726**
 DATE FILED 9/16/10
 BY AT
 DESCRIPTION FILED
 ONEIDA CO. SURVEYOR'S OFFICE

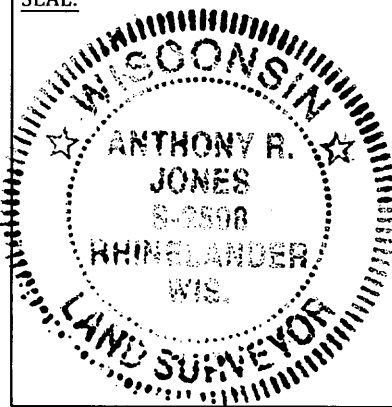
PLAN VIEW OF LANDMARK MONUMENT LOCATION WITH BEARING AND DISTANCE TIES TO A MINIMUM OF FOUR DESCRIBED WITNESS OR REFERENCE MONUMENTS OF CONCRETE, NATURAL STONE, METAL, LIVE BEARING TREES OR EQUIVALENT MATERIAL OR INDICATE DATUM AND COORDINATES IF TIES OUT USING GPS. INDICATE TYPE OF MONUMENT RESET.



SCALE: 1"= 60'
NORTH BASED ON THE ONEIDA COUNTY COORDINATE SYSTEM



SEAL:



PROFESSIONAL LAND SURVEYOR CERTIFICATE:

THIS LAND CORNER WAS RESET AFTER THE RECONSTRUCTION THE ROADS AS SHOWN HEREON. THIS CORNER HAS NOT BEEN TESTED FOR ITS ACCURACY DURING THE COURSE OF THIS PRESERVATION. IT IS RECOMMENDED THAT THOSE USING THE CORNER POSITION EVALUATE AND VERIFY IT PRIOR TO USE IN A SURVEY OR OTHER USE.

I HEREBY CERTIFY THAT I AM A DULY LICENSED PROFESSIONAL LAND SURVEYOR IN THE STATE OF WISCONSIN; THAT THE LOCATION OF THIS SURVEY OR LAND CORNER WAS REFERENCED BY ME OR UNDER MY DIRECT SUPERVISION AND CONTROL AND THAT THE INFORMATION SHOWN ON THIS RECORD IS TRUE AND CORRECT TO THE BEST OF MY KNOWLEDGE AND BELIEF

[Signature]
 ANTHONY R. JONES, P.L.S. No. S-2508

9/14/10
DATE