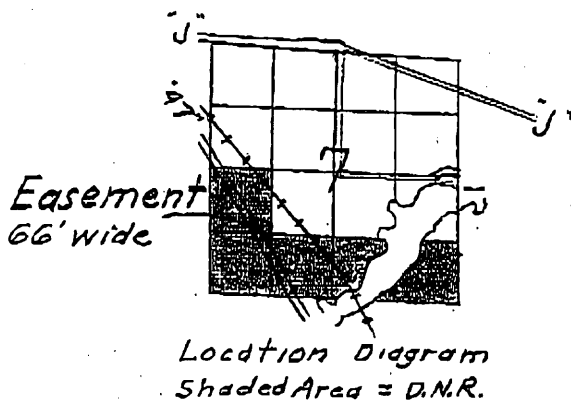


L2731

L2731



To be abandoned

NW-SW  
D.N.R.

NE-SW  
Erdman

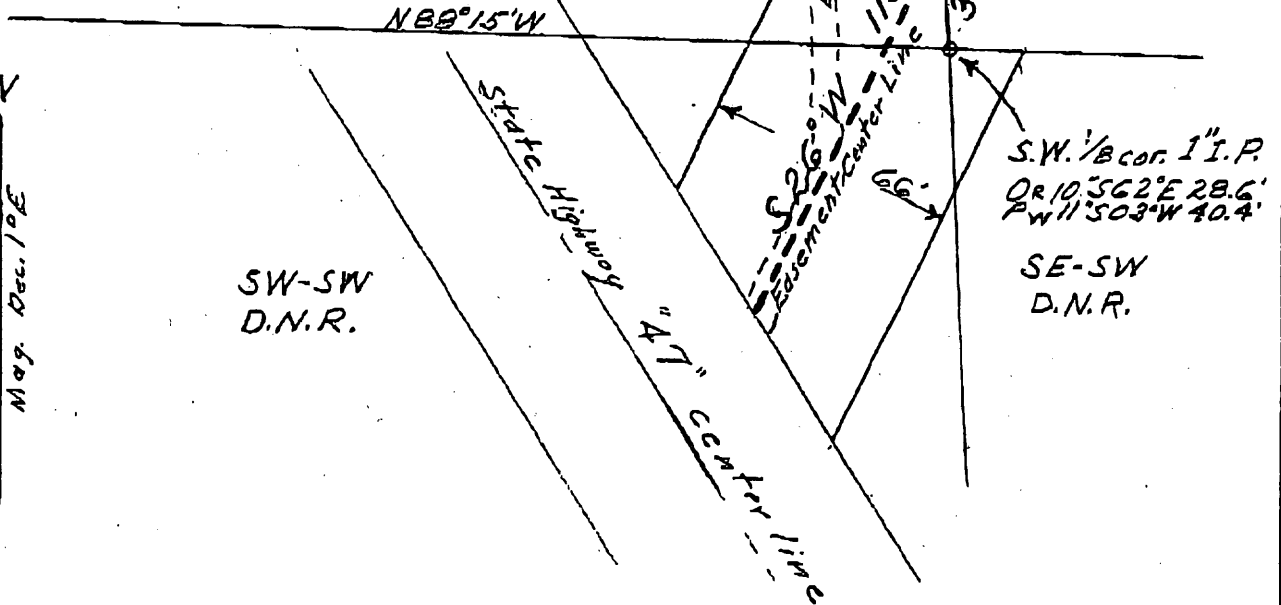
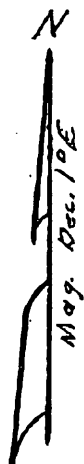


EXHIBIT "A"

ROAD EASEMENT TO THE  
TOWN OF WOODRUFF IN  
T 39 N, R 7 E, SEC. 7, NW/SW, SW/SW, SE/SW,  
ONEIDA COUNTY, WISCONSIN  
SCALE 1 IN. = 50 FT.

OCT. 4, 1971  
F. H. COPP

MAP #	<b>L2731</b>
DATE FILED	10/19/10
BY	elt
DESCRIPTION FILED	
ONEIDA CO. SURVEYOR'S OFFICE	

L2731