

LAND CORNER PRESERVATION RECORD

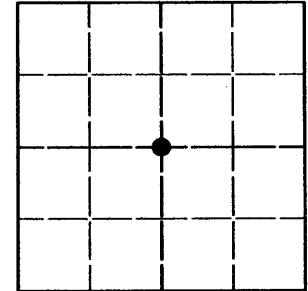
It is the purpose of this record to preserve the location of a survey or land corner monument that may be disturbed, removed or inaccessible due to road construction or other activity.

County: Oneida	City, Village, Town: Lake Tomahawk	Section: 10	Town: 38	Range: 7
--------------------------	--	-----------------------	--------------------	--------------------

Describe what was found, its location and origin. If known, describe if the monument found is a 1/16 corner or other subdivisional corner; a monument called for in a deed; a monument shown on a survey map or plat etc and in what GL or 1/4 - 1/4 section or subdivision the monument is located.

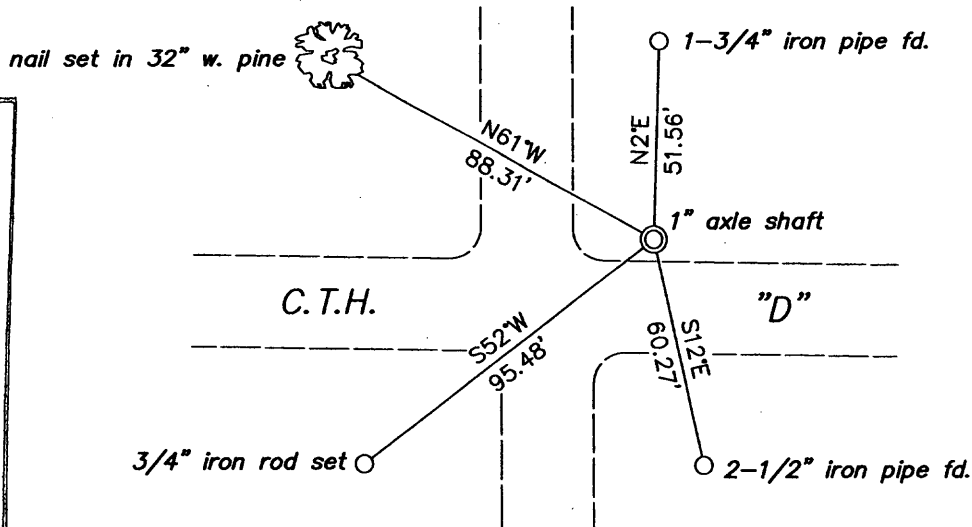
Approximate location within Section 10, T38N, R7E

May 14, 2010: I found a 1" diam. axle shaft as described on OCS #B-5335. I found the stump remains of the oak bearing tree at record bearing and distance. I established accessories as shown below. After the paving on August 18, 2010, I recovered the axle shaft and determined it to be undisturbed.



3807102020

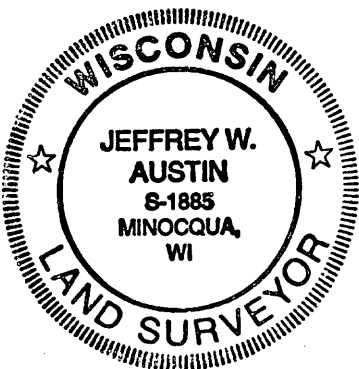
Plan view map of landmark monument location with bearing and distance ties to a minimum of four described witness or reference monuments of concrete, natural stone, metal, live bearing trees or equivalent material or indicate datum & coordinates if tied out using GPS. Indicate what was reset.



NORTH ↑

MAP # L 2753
 DATE FILED 10/29/10
 BY [Signature]
 DESCRIPTION FILED
 ONEIDA CO. SURVEYOR'S OFFICE

Seal:



PROFESSIONAL LAND SURVEYOR CERTIFICATE:

This land corner was referenced out in advance of road construction or other activity as an act of preserving survey evidence or monuments. This corner has not been tested for its accuracy during the course of this preservation. It is recommended that those using the corner position evaluate and verify it prior to use in a survey or other use.

I hereby certify that I am a duly licensed Professional Land Surveyor in the State of Wisconsin; that the location of this Survey or Land Corner was referenced by me, or under my direct supervision and control and that the information shown on this record is true and correct to the best of my knowledge and belief.

Signature

OCT. 28, 2010
Date