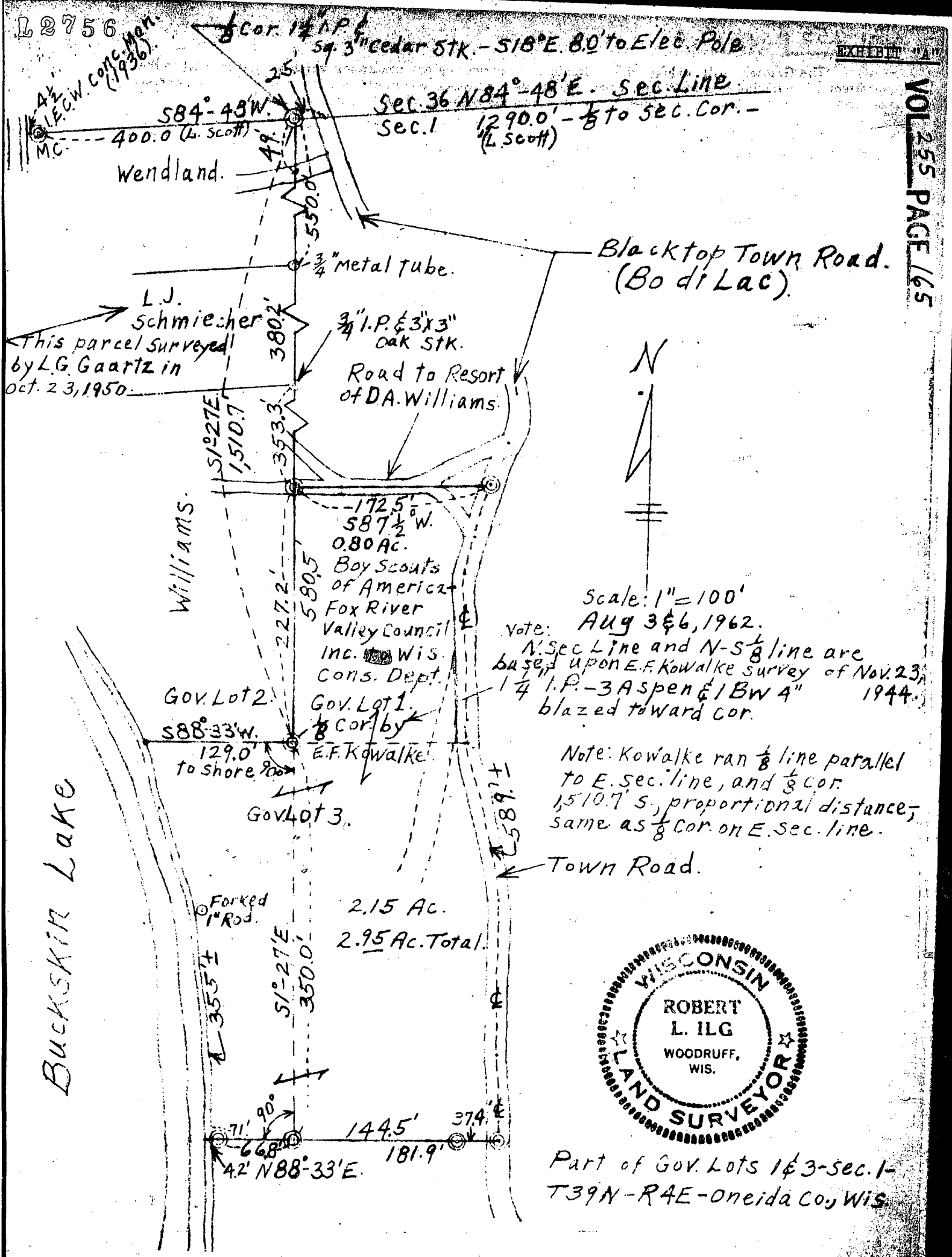


L2756

EXHIBIT "A"

VOL 255 PAGE 165



Scale: 1" = 100'
 Note: AUG 3 & 6, 1962.
 N. Sec Line and N-S 1/8 line are based upon E.F. Kowalke survey of Nov. 23, 1944.
 1/4" I.P. - 3 Aspen & 1 BW 4" blazed toward cor.
 Note: Kowalke ran 1/8 line parallel to E. sec. line, and 1/8 cor. 1510.7 S., proportional distance, same as 1/8 cor. on E. sec. line.



Part of Gov. Lots 1 & 3 - sec. 1 - T39N - R4E - Oneida Co., Wis

MAP # L2756
 DATE FILED 1/25/11
 BY R.H.
 DESCRIPTION FILED
 ONEIDA CO. SURVEYOR'S OFFICE

L2756

L2756