

LAND CORNER PRESERVATION RECORD

It is the purpose of this record to preserve the location of a survey or land corner monument that may be disturbed, removed or inaccessible due to road construction or other activity.

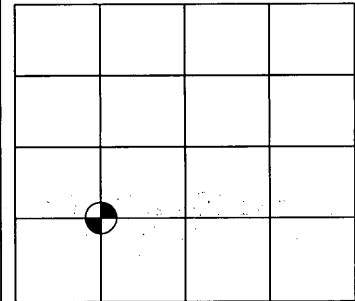
County: ONEIDA	City, Village, Town: TOWN OF THREE LAKES	Section: 16	Town: 38N	Range: 11E
--------------------------	--	-----------------------	---------------------	----------------------

Describe what was found, its location and origin. If known, describe if the monument found is a 1/16 corner or other subdivisional corner; a monument called for in a deed; a monument shown on a survey map or plat etc and in what GL or 1/4 - 1/4 section or subdivision the monument is located.

I found a railroad spike in the pavement of C.W. Smith Road at the SW 1/16th corner location as shown on Favorite Surveying Map No. 9445 and made accessories as shown below.

After construction, I set a Steel Survey Pin at the railroad spike location.

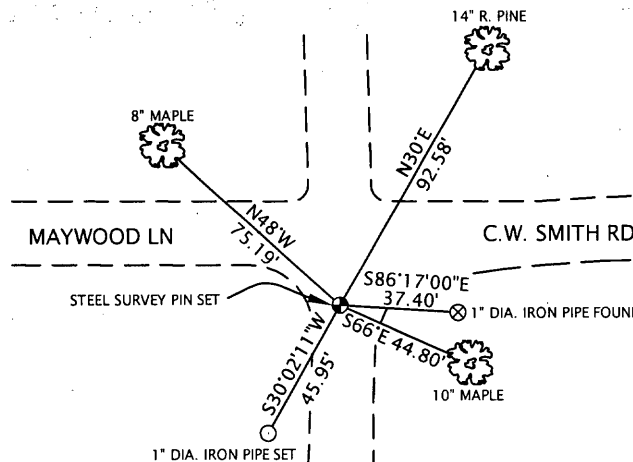
Approximate location within Section 16



3811161030

Plan view map of landmark monument location with bearing and distance ties to a minimum of four described witness or reference monuments of concrete, natural stone, metal, live bearing trees or equivalent material or indicate datum & coordinates if tied out using GPS. Indicate what was reset.

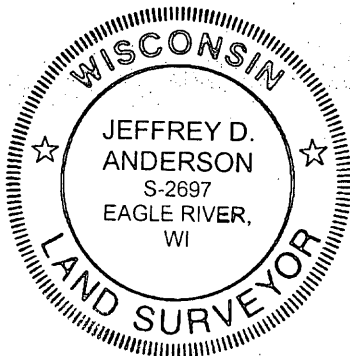
Distances to Bearing Trees are measured to a 60D nail in the side of the tree.



NORTH ↑
NOT TO SCALE

MAP #	1.2757
DATE FILED	1/25/11
BY	<i>JH</i>
DESCRIPTION FILED
ONEIDA CO. SURVEYOR'S OFFICE	

Seal:



PROFESSIONAL LAND SURVEYOR CERTIFICATE:

This land corner was referenced out in advance of road construction or other activity as an act of preserving survey evidence or monuments. This corner has not been tested for its accuracy during the course of this preservation. It is recommended that those using the corner position evaluates and verifies it prior to use in a survey or other use.

I Jeffrey D. Anderson, RLS # 2697 hereby certify that I am a duly licensed Professional Land Surveyor in the State of Wisconsin; that the location of this Survey or Land Corner was referenced by me, or under my direct supervision and control and that the information shown on this record is true and correct to the best of my knowledge and belief.

JH Anderson
Signature

10/22/10
Date