

# LAND PRESERVATION RECORD

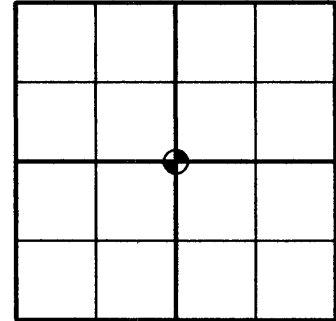
IT IS THE PURPOSE OF THIS RECORD TO PRESERVE THE LOCATION OF A SURVEY OR LAND CORNER MONUMENT THAT MAY BE DISTURBED, REMOVED OR INACCESSIBLE DUE TO ROAD CONSTRUCTION OR OTHER ACTIVITY.

<b>COUNTY:</b> ONEIDA	<b>CITY, VILLAGE, TOWN:</b> TOWN OF STELLA	<b>SECTION:</b> 26	<b>TOWN:</b> 37 NORTH	<b>RANGE:</b> 10 EAST
--------------------------	---	-----------------------	--------------------------	--------------------------

DESCRIBE WHAT WAS FOUND, IT'S LOCATION AND ORIGIN. IF KNOWN, DESCRIBE IF THE MONUMENT FOUND IS A 1/16 CORNER OR OTHER SUBDIVISIONAL CORNER; A MONUMENT CALLED FOR IN A DEED; A MONUMENT SHOWN ON A SURVEY MAPS OR PLAT, ETC., AND IN WHAT GOV'T LOT, 1/4-1/4 SECTION OR SUBDIVISION THE MONUMENT IS LOCATED.

MAY 29, 2010 - CENTER 1/4 SECTION BY ROHDE APPEARS TO HAVE BEEN OBLITERATED DURING VERY RECENT CONSTRUCTION WORK ON CULVERT UNDER THE HIGHWAY. WITNESS CORNERS 2, 3 AND 6, AS SHOWN ON HIS MONUMENT RECORD ARE IN GOOD CONDITION. WITNESS CORNER 1 WAS FOUND, IN ITS ENTIRETY, LYING ON THE GROUND, BROKEN IN HALF. PK NAIL 4 WAS OBLITERATED DURING CULVERT WORK AND PK NAIL 5 WAS FOUND BENT AND NEARLY OUT OF THE BLACKTOP. SEE PREVIOUS MONUMENT RECORDS FOR RECORDED DISTANCES.

APPROXIMATE LOCATION WITHIN SECTION 26



371026 2020  
PRE CONST TIES

MAP # L 2773

DATE FILED 6/14/11

BY AA

DESCRIPTION FILED .....

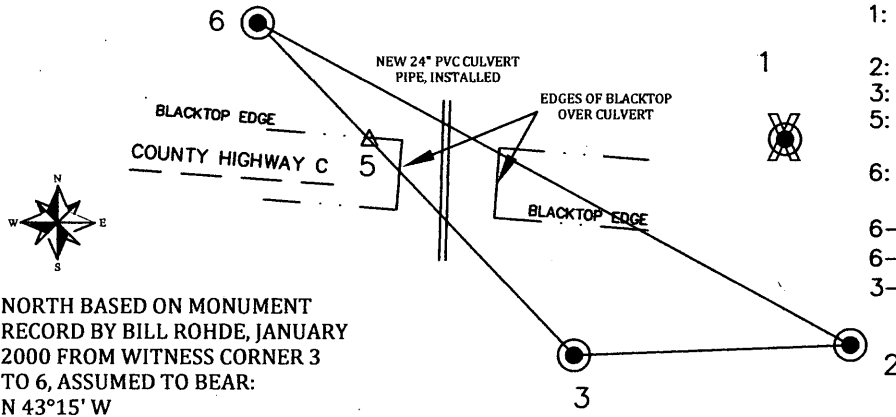
ONEIDA CO. SURVEYOR'S OFFICE

PLAN VIEW OF LANDMARK MONUMENT LOCATION WITH BEARING AND DISTANCE TIES TO A MINIMUM OF FOUR DESCRIBED WITNESS OR REFERENCE MONUMENTS OF CONCRETE, NATURAL STONE, METAL, LIVE BEARING TREES OR EQUIVALENT MATERIAL OR INDICATE DATUM AND COORDINATES IF TIES OUT USING GPS. INDICATE TYPE OF MONUMENT RESET.

**WITNESS MONUMENT TIES:**

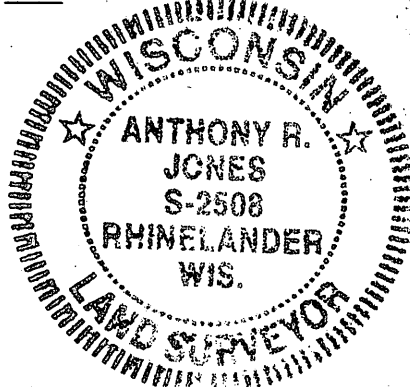
- 1: FOUND ALUMINUM MON. LYING ON GROUND, BROKEN IN HALF
- 2: FOUND ALUMINUM MON. IN CONCRETE
- 3: FOUND ALUMINUM MON. IN CONCRETE
- 5: FOUND BENT PK NAIL AT EDGE OF BLACKTOP
- 6: FOUND ALUMINUM MON. IN CONCRETE

- 6-2: S 61°17'53" E, 210.85'  
 6-3: S 43°15'00" E, 138.77'  
 3-2: N 87°42'29" E, 86.50'



NORTH BASED ON MONUMENT RECORD BY BILL ROHDE, JANUARY 2000 FROM WITNESS CORNER 3 TO 6, ASSUMED TO BEAR: N 43°15' W

SEAL:



**PROFESSIONAL LAND SURVEYOR CERTIFICATE:**

THIS LAND CORNER WILL BE RESET AFTER THE RECONSTRUCTION THE ROADS AS SHOWN HEREON. THIS CORNER HAS NOT BEEN TESTED FOR ITS ACCURACY DURING THE COURSE OF THIS PRESERVATION. IT IS RECOMMENDED THAT THOSE USING THE CORNER POSITION EVALUATE AND VERIFY IT PRIOR TO USE IN A SURVEY OR OTHER USE.

I HEREBY CERTIFY THAT I AM A DULY LICENSED PROFESSIONAL LAND SURVEYOR IN THE STATE OF WISCONSIN; THAT THE LOCATION OF THIS SURVEY OR LAND CORNER WAS REFERENCED BY ME OR UNDER MY DIRECT SUPERVISION AND CONTROL AND THAT THE INFORMATION SHOWN ON THIS RECORD IS TRUE AND CORRECT TO THE BEST OF MY KNOWLEDGE AND BELIEF.

*Anthony R. Jones*      6/3/2011      DATE  
 ANTHONY R. JONES, R.L.S. No. S-2508