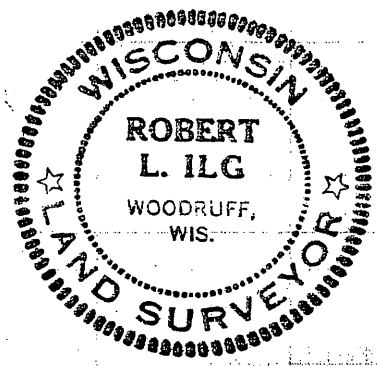
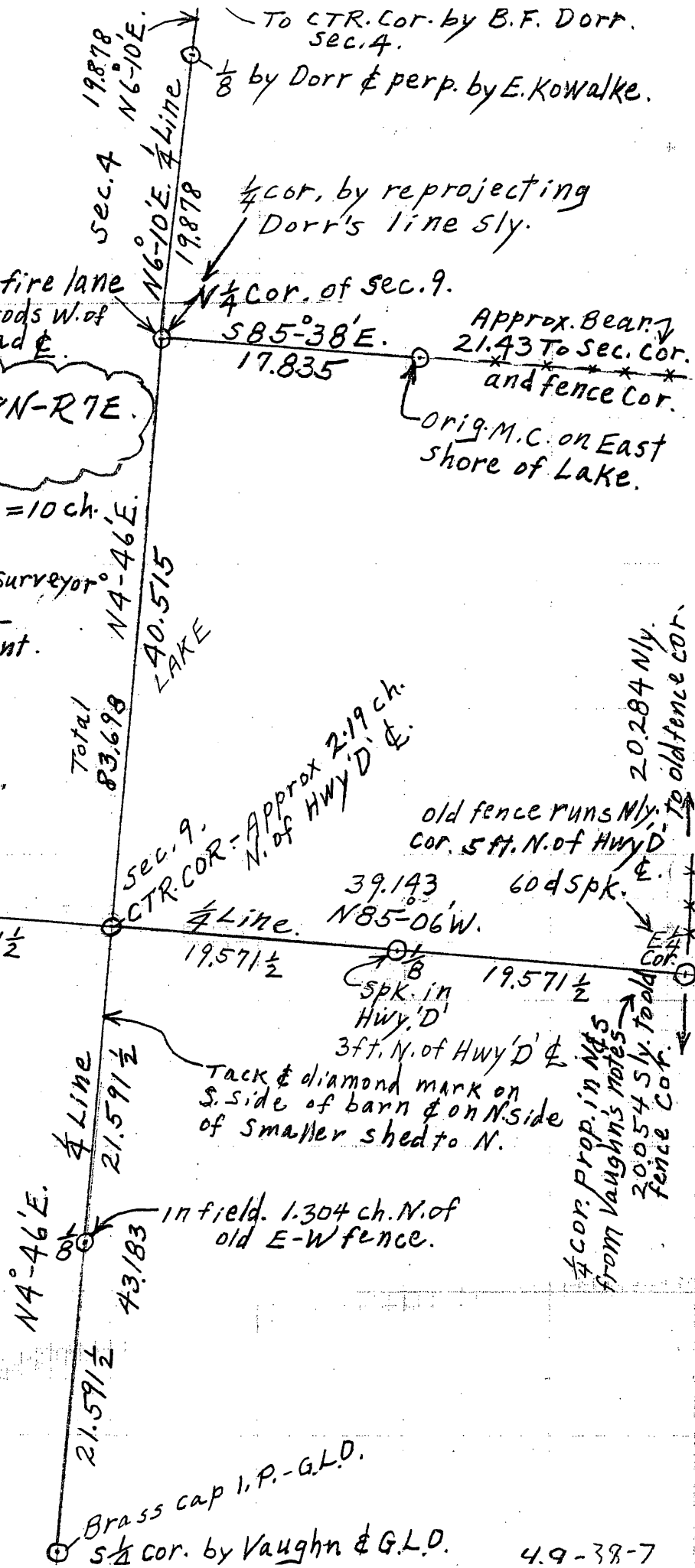


MAP # **L 2810**
 DATE FILED 8/22/11
 BY RH
 DESCRIPTION FILED.....
 ONEIDA CO. SURVEYOR'S OFFICE

*Survey in Sec. 9 & 4 - T38N - R7E.
 Oneida County, Wis.*

Scale: 1 inch = 10 ch.
 May 1965
 Robert Ilg - Surveyor
 Gilbert Mentz - Assistant



L 2810

49-38-7