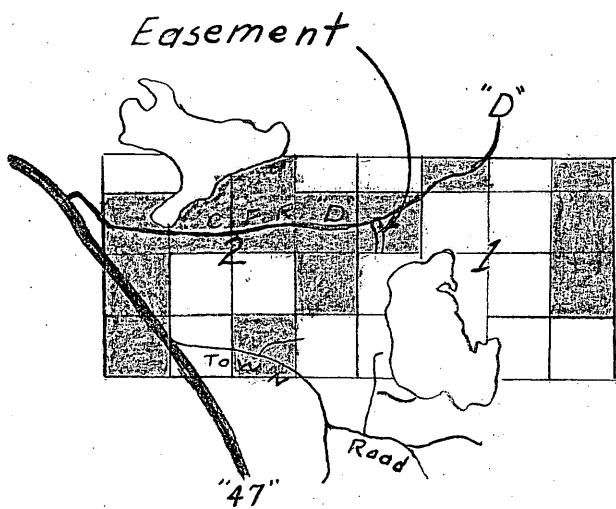


N



Location Diagram
Shaded area = D.N.R. Land

MAP # **L 2816**
 DATE FILED 8/22/11
 BY RFH
 DESCRIPTION FILED
 ONEIDA CO. SURVEYOR'S OFFICE

Easement 66' wide

SW/NW
D.N.R.

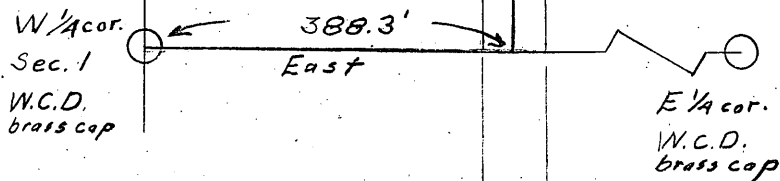


EXHIBIT "A"

ROAD EASEMENT TO THE
 TOWN OF LAKE TOMAHAWK IN
 THE SW/NW OF SEC. 1, T38N, R7 E, ONEIDA CO.
 SCALE 1 IN. = 200 FT. SEPT. 10, 1971
 F. H. COPP

Note - Bearings & distances from map by James G. Griffin dated July 1971.

1-2816