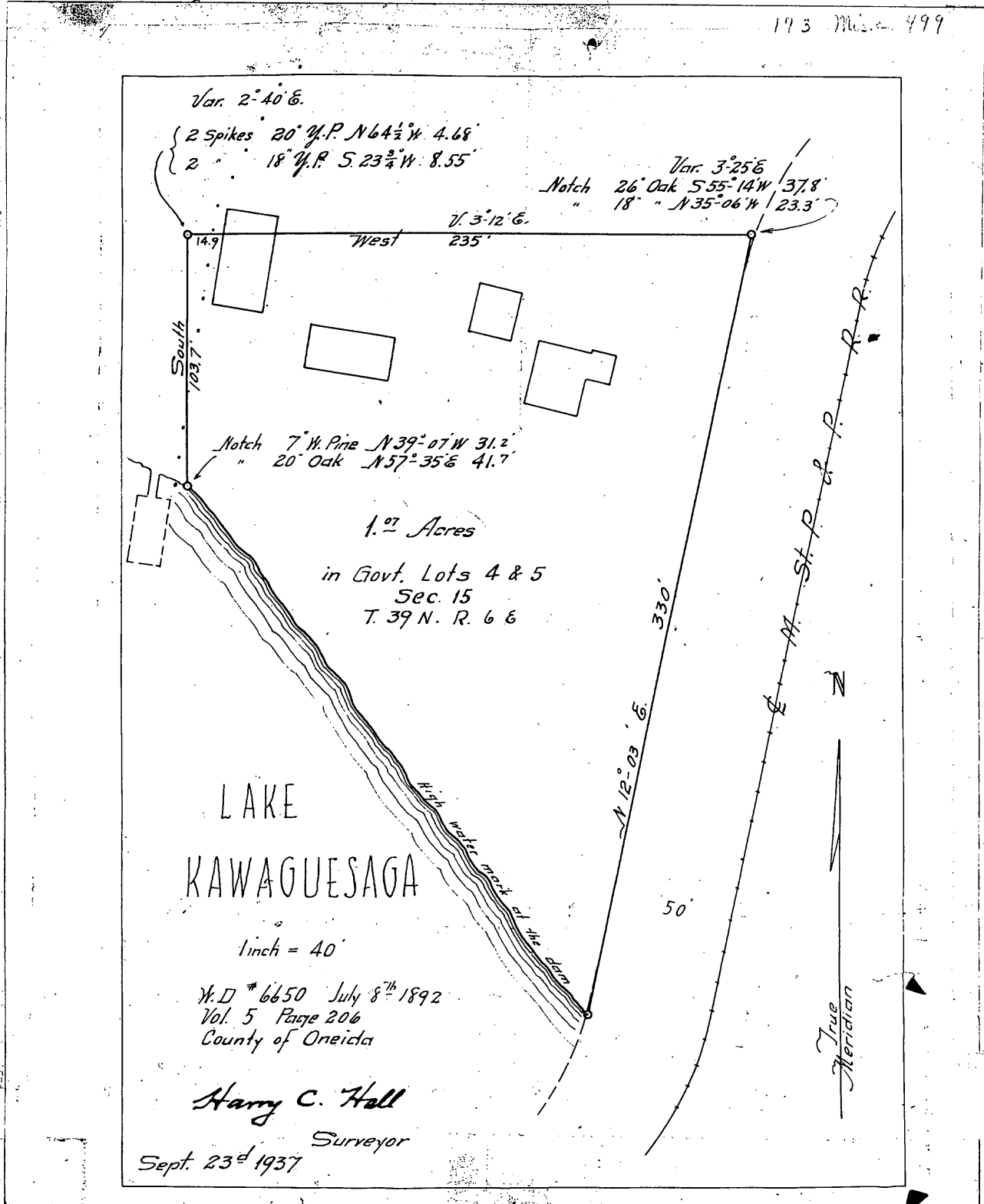


WITNESS my hand and seal at the City of Rhinelander, Oneida County, Wisconsin, this 30th day of November, A. D. 1937.

Harry C. Hall
Surveyor

173 Misc. 499



2 acres more or less in Gov't lots 4 and 5 of section 15. Beginning at a point of high water mark of Lake Kewaugasaga & the north line of the C. Mil & St Paul R. R. right of way, thence along said line in a N.E. direction 20 rods - due west 14 rods & 4 ft - due south about 8 rods to high water mark - thence along the meandering line of said lake in southerly direction to place of beginning.

Received for Record the 24th day of March A. D. 1949 at 2:10 o'clock P. M.
Agnes Verage REGISTER.

MAP # L 2849
 DATE FILED 11/14/11
 BY AH
 DESCRIPTION FILED
 ONEIDA CO. SURVEYOR'S OFFICE