

# LAND PRESERVATION RECORD

IT IS THE PURPOSE OF THIS RECORD TO PRESERVE THE LOCATION OF A SURVEY OR LAND CORNER MONUMENT THAT MAY BE DISTURBED, REMOVED OR INACCESSIBLE DUE TO ROAD CONSTRUCTION OR OTHER ACTIVITY.

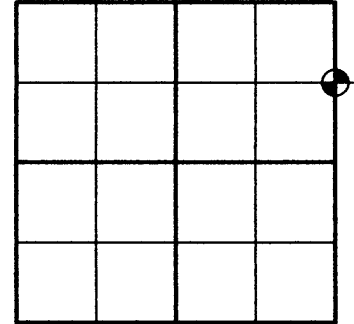
<b>COUNTY:</b> ONEIDA	<b>CITY, VILLAGE, TOWN:</b> TOWN OF PELICAN	<b>SECTION:</b> 20	<b>TOWN:</b> 36 NORTH	<b>RANGE:</b> 9 EAST
--------------------------	--	-----------------------	--------------------------	-------------------------

DESCRIBE WHAT WAS FOUND, IT'S LOCATION AND ORIGIN. IF KNOWN, DESCRIBE IF THE MONUMENT FOUND IS A 1/16 CORNER OR OTHER SUBDIVISIONAL CORNER; A MONUMENT CALLED FOR IN A DEED; A MONUMENT SHOWN ON A SURVEY MAPS OR PLAT, ETC., AND IN WHAT GOV'T LOT, 1/4-1/4 SECTION OR SUBDIVISION THE MONUMENT IS LOCATED.

MAY 9, 1994 - U.S. PUBLIC LAND SURVEY MONUMENT RECORD BY MILO STEFAN CALLS MONUMENT AS SET RAILROAD SPIKE.

APRIL 2, 2012- FOUND N 1/16 CORNER ON EAST LINE OF SEC. 20-36-09 AS DESCRIBED. 3/4" IRON PIPE, N 20° W, 147.53' LYING ON THE GROUND. 1" BY 24" HIGH MONUMENT/ALUMINUM CAP, S 76° E, 22.77' FOUND BENT AND ON THE GROUND. SET NEW TIE AS SHOWN BELOW. SET 4" SPIKE IN SOUTH FACE OF RED OAK FOR DISTANCE AND BEARING IS TO THE BLAZE IN THE CENTER. ALL OTHER TIES AS SHOWN BELOW.

APPROXIMATE LOCATION WITHIN SECTION 20

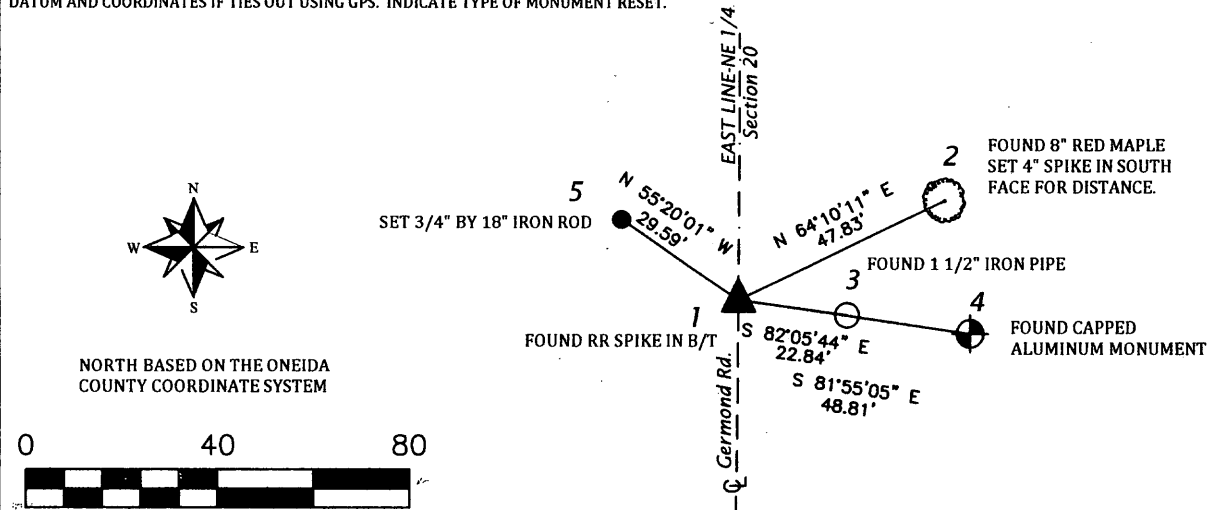


3609203000

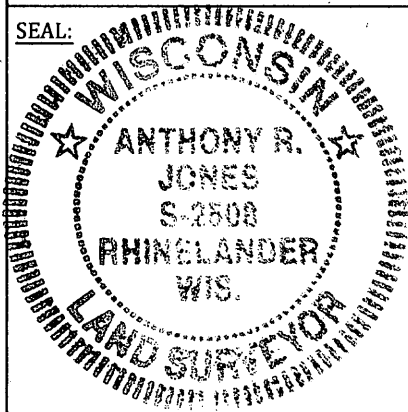
✓ MAP # **L 2873**  
 DATE FILED 4/10/12  
 BY RAH  
 DESCRIPTION FILED .....  
 ONEIDA CO. SURVEYOR'S OFFICE

PLAN VIEW OF LANDMARK MONUMENT LOCATION WITH BEARING AND DISTANCE TIES TO A MINIMUM OF FOUR DESCRIBED WITNESS OR REFERENCE MONUMENTS OF CONCRETE, NATURAL STONE, METAL, LIVE BEARING TREES OR EQUIVALENT MATERIAL OR INDICATE DATUM AND COORDINATES IF TIES OUT USING GPS. INDICATE TYPE OF MONUMENT RESET.

TOWN SHOP



SEAL:



**PROFESSIONAL LAND SURVEYOR CERTIFICATE:**

THIS LAND CORNER WILL BE RESET AFTER THE RECONSTRUCTION THE ROADS AS SHOWN HEREON. THIS CORNER HAS NOT BEEN TESTED FOR ITS ACCURACY DURING THE COURSE OF THIS PRESERVATION. IT IS RECOMMENDED THAT THOSE USING THE CORNER POSITION EVALUATE AND VERIFY IT PRIOR TO USE IN A SURVEY OR OTHER USE.

I HEREBY CERTIFY THAT I AM A DULY LICENSED PROFESSIONAL LAND SURVEYOR IN THE STATE OF WISCONSIN; THAT THE LOCATION OF THIS SURVEY OR LAND CORNER WAS REFERENCED BY ME OR UNDER MY DIRECT SUPERVISION AND CONTROL AND THAT THE INFORMATION SHOWN ON THIS RECORD IS TRUE AND CORRECT TO THE BEST OF MY KNOWLEDGE AND BELIEF.

*[Signature]* 4/3/2012  
 ANTHONY R. JONES, R.L.S. No. S-2508

DATE