

LAND CORNER PRESERVATION RECORD

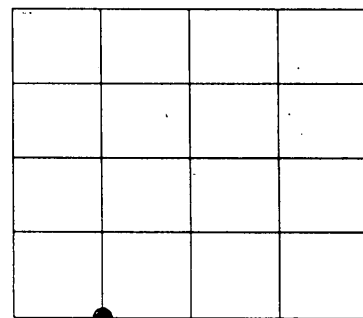
It is the purpose of this record to preserve the location of a survey or land corner monument that may be disturbed, removed or inaccessible due to road construction or other activity.

County: ONEIDA	City, Village, Town: TOWN OF STELLA	Section: 14	Town: T 37 N	Range: R 10 E
--------------------------	---	-----------------------	------------------------	-------------------------

Describe what was found, its location and origin. If known, describe if the monument found is a 1/16 corner or other subdivisional corner; a monument called for in a deed; a monument shown on a survey map or plat etc and in what GL or 1/4 - 1/4 section or subdivision the monument is located.

Approximate location within Section **W 1/16 SOUTH LINE**

02/15/2012 Todd Loftus set mag. nail when surveying in sec. 14 and witnessed as shown below.



MAP # **L2906**
 DATE FILED 1-25-13
 BY JLB
 DESCRIPTION FILED.....
 ONEIDA CO. SURVEYOR'S OFFICE

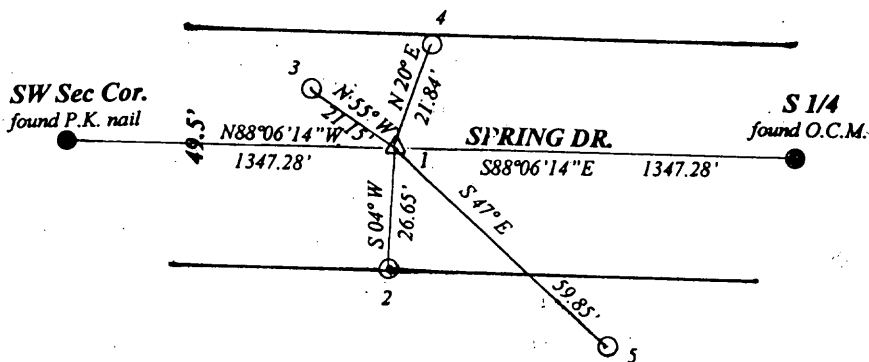
3710 14 0030

Plan view map of landmark monument location with bearing and distance ties to a minimum of four described witness or reference monuments of concrete, natural stone, metal, live bearing trees or equivalent material or indicate datum & coordinates if tied out using GPS. Indicate what was reset.

LEGEND

NORTH ↑
 NO SCALE handheld compass

- 1- set mag. nail
- 2- set spike in 10" Black Cherry
- 3- set 2" iron pipe
- 4- set spike in 6" white Birch
- 5- set spike in 10" Black Cherry



Seal:



PROFESSIONAL LAND SURVEYOR CERTIFICATE:

This land corner was referenced out in advance of road construction or other activity as an act of preserving survey evidence or monuments. This corner has not been tested for its accuracy during the course of this preservation. It is recommended that those using the corner position evaluates and verifies it prior to use in a survey or other use.

I hereby certify that I am a duly licensed Professional Land Surveyor in the State of Wisconsin; that the location of this Survey or Land Corner was referenced by me, or under my direct supervision and control and that the information shown on this record is true and correct to the best of my knowledge and belief.

Todd Loftus
 Signature _____ Date March 5, 2012

L2906