

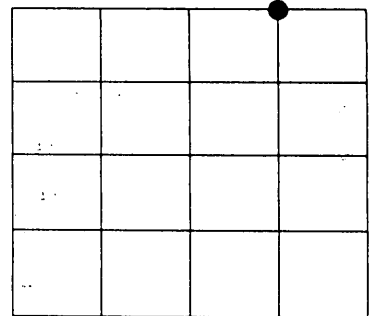
LAND CORNER PRESERVATION RECORD

It is the purpose of this record to preserve the location of a survey or land corner monument that may be disturbed, removed or inaccessible due to road construction or other activity.

County: ONEIDA	City, Village, Town: TOWN OF SUGARCAMP	Section: 16	Town: T38N	Range: R9E
--------------------------	--------------------------------------------------	-----------------------	----------------------	----------------------

Describe what was found, its location and origin. If known, describe if the monument found is a 1/16 corner or other subdivisional corner; a monument called for in a deed; a monument shown on a survey map or plat etc and in what GL or 1/4 - 1/4 section or subdivision the monument is located.
02/16/2013 Todd Loftus set Mag. nail while working in the NE1/4NE1/4
And witness as shown below.

Approximate location within Section **E 1/16 NORTH LINE**



MAP # **L 2013**

DATE FILED **4-29-13**.....

BY **JLB**.....

DESCRIPTION FILED.....

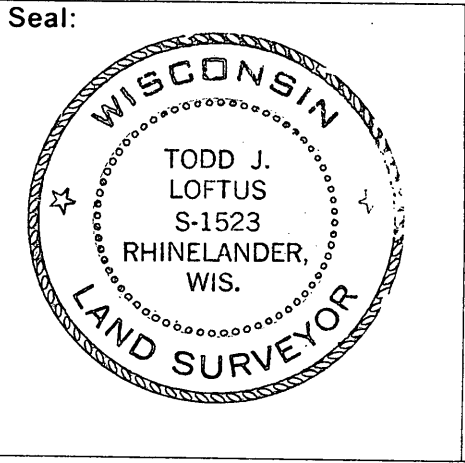
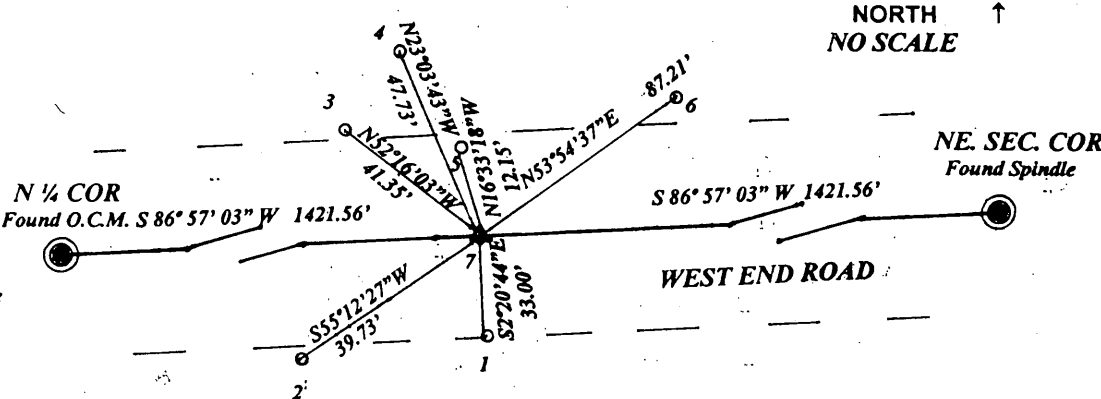
ONEIDA CO. SURVEYOR'S OFFICE

Post Const
3809090010

Plan view map of landmark monument location with bearing and distance ties to a minimum of four described witness or reference monuments of concrete, natural stone, metal, live bearing trees or equivalent material or indicate datum & coordinates if tied out using GPS. Indicate what was reset.

LEGEND

- 1- set 1.25" Iron pipe
- 2- set spike in 12" Red Pine
- 3- set spike in 10" Red Pine
- 4- set spike in 8" Red Pine
- 5- set mag. nail side of powerpole
- 6- set spike in 18" Maple
- 7- set mag. nail



PROFESSIONAL LAND SURVEYOR CERTIFICATE:
 This land corner was referenced out in advance of road construction or other activity as an act of preserving survey evidence or monuments. This corner has not been tested for its accuracy during the course of this preservation. It is recommended that those using the corner position evaluates and verifies it prior to use in a survey or other use.

I hereby certify that I am a duly licensed Professional Land Surveyor in the State of Wisconsin; that the location of this Survey or Land Corner was referenced by me, or under my direct supervision and control and that the information shown on this record is true and correct to the best of my knowledge and belief.

Todd Loftus

 Signature

Feb. 28, 2013

 Date