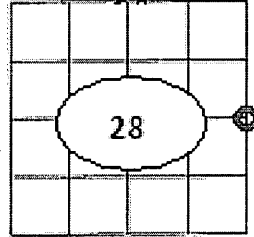


U.S. PUBLIC LAND SURVEY MONUMENT RECORD

Note: This form is intended and designed to fulfill all requirements of Wisconsin Administrative Code Chapter A-E 7.08 (3) (a-i).



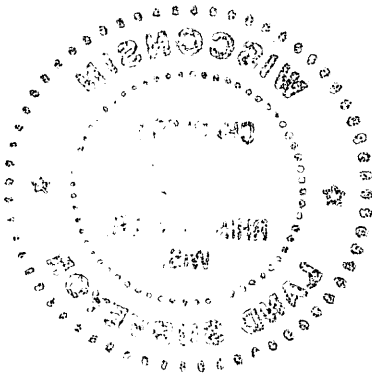
(a) Corner: East 1/4
 Section: 28
 Township: 37 N.
 Range: 07 E.
 Town: Cassian
 County: Oneida

(b) History of Original Corner

Original Surveyor	Jenkins	Original B.T.'s	
Date of Survey	Nov. 1862	10" Aspen	S 40° E 10 links
		12" Aspen	S 61° W 15 links

(f)(g)(h) Description of monument found at this corner and if it was accepted, state all evidence (material, testimonial, occupational, plats, records, other monuments) used as a basis for establishing location. If reestablished through last corner proportionate methods, indicate all monuments, distances and directions used to establish. Indicate type of monument and sign post found or set.

- June, 1936 Maine visited the corner and replaced an "oak stake", placed by Vaughn, with another "oak stake" He recorded ties: White Pine stp 20" S 15 1/2° W .05
 Y. R. stp 12" S 66° E .17 1/2
- In March of 2013 I visited the corner and found a 2 1/2" iron Pipe with a brass cap. I find no record of the origin of the pipe. The distances and bearings match very well with both the NE corner and the SE corner. I accepted the pipe's location and made new ties.



REGISTER OF DEEDS OFFICE
ONEIDA COUNTY
FILED

JUN 12 2013

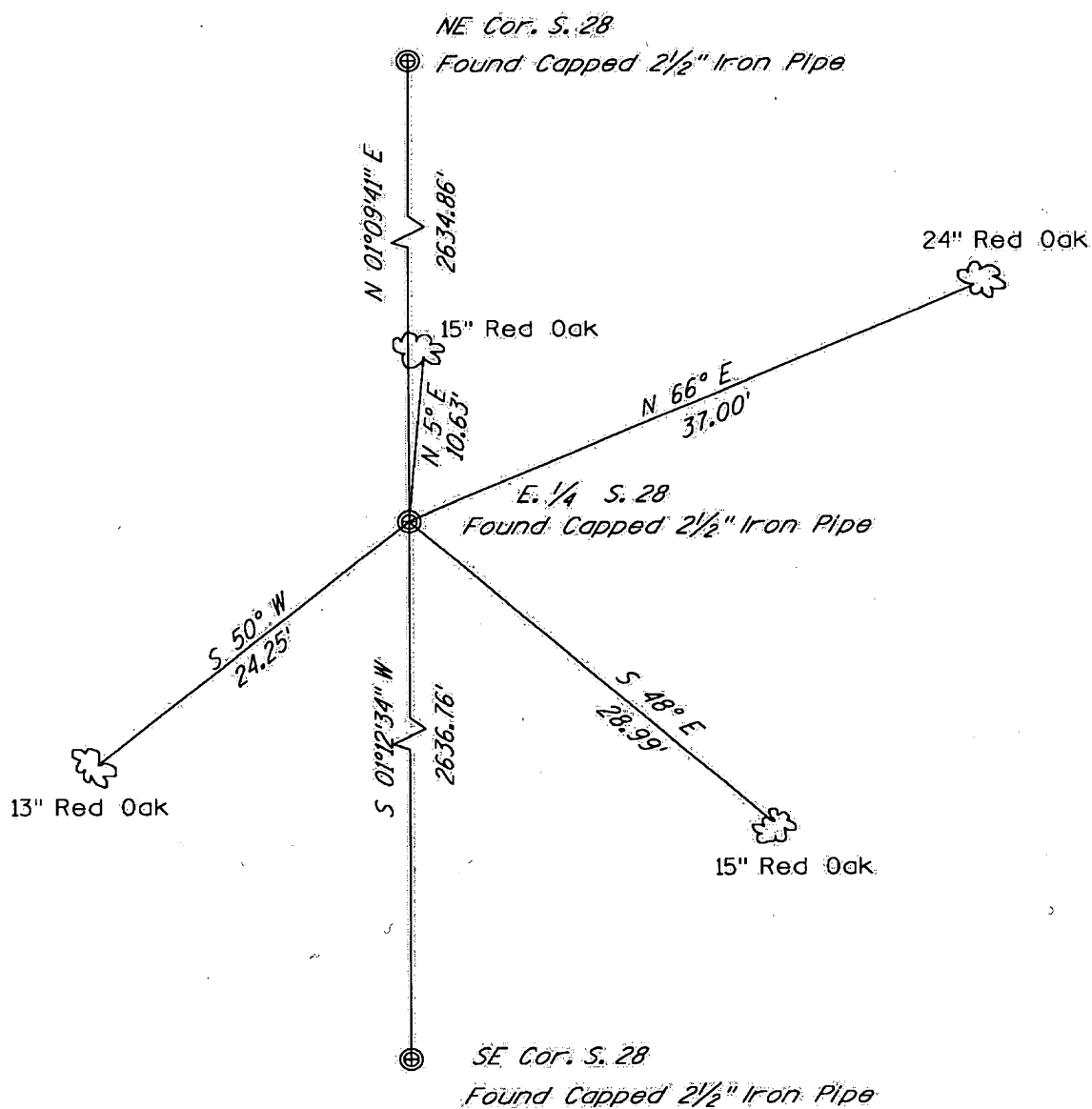
AT _____ O'CLOCK _____ M
KYLE J. FRANSON
REGISTER OF DEEDS

MAP # L2918
 DATE FILED 6-18-13
 BY JB
 DESCRIPTION FILED
 ONEIDA CO. SURVEYOR'S OFFICE

3707282000

T-13

(c)(d)(e) Plan view of corner with ties to at least 4 witnesses. If in disagreement with previously established corner, show the distance between the two corners and also indicate the tie to the disputed corner



(i) I, Charles L. Oleinik, Registered Land Surveyor No 2439, hereby certify that the corner location on this record was referenced by me and that this U.S. Public Land Survey Monument Record is correct and complete to the best of my knowledge and belief.

Charles L. Oleinik

5-28-13

Signature

Date



Index No. T-13