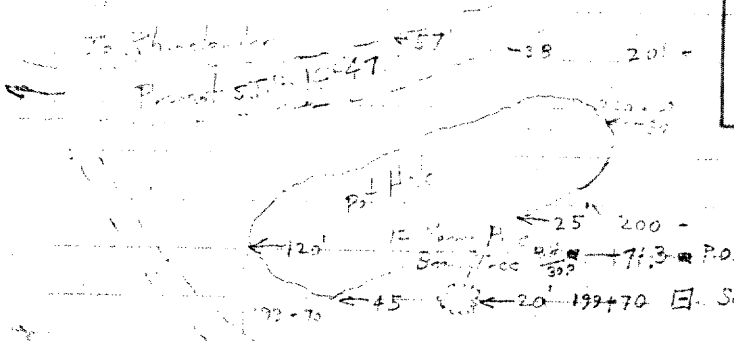


RECEIVED & FILED # **L293**
 Onida County Surveyor's Office
 Date **FEB. 14 1966**
 By **M.J.H.**
 OCS Area #



Many surface
 boulders

199 -

40
 X

198 -

40
 X

197 -

35
 X

196 -

35

195 -

35
 X

194 -

35
 X

193 -

35
 X

192 -

35
 X

191 -

35
 X

201+75
 199+70
 205

← 120
 Numerous surface boulders
 up to 3' dia. out along top
 of dirt for barrier
 sandy soil

Pat. Just Fine
 35
 X

Stamp

18681

N.B. 3944

17 | 16

20 | 21

B. N. W. R.R.

20

I C A N

173120

178000

179150

186140

1970

U. S. Wild Land

STATE TRUNK HIGHWAY
No 14B-47

20

21

15

29

28

13

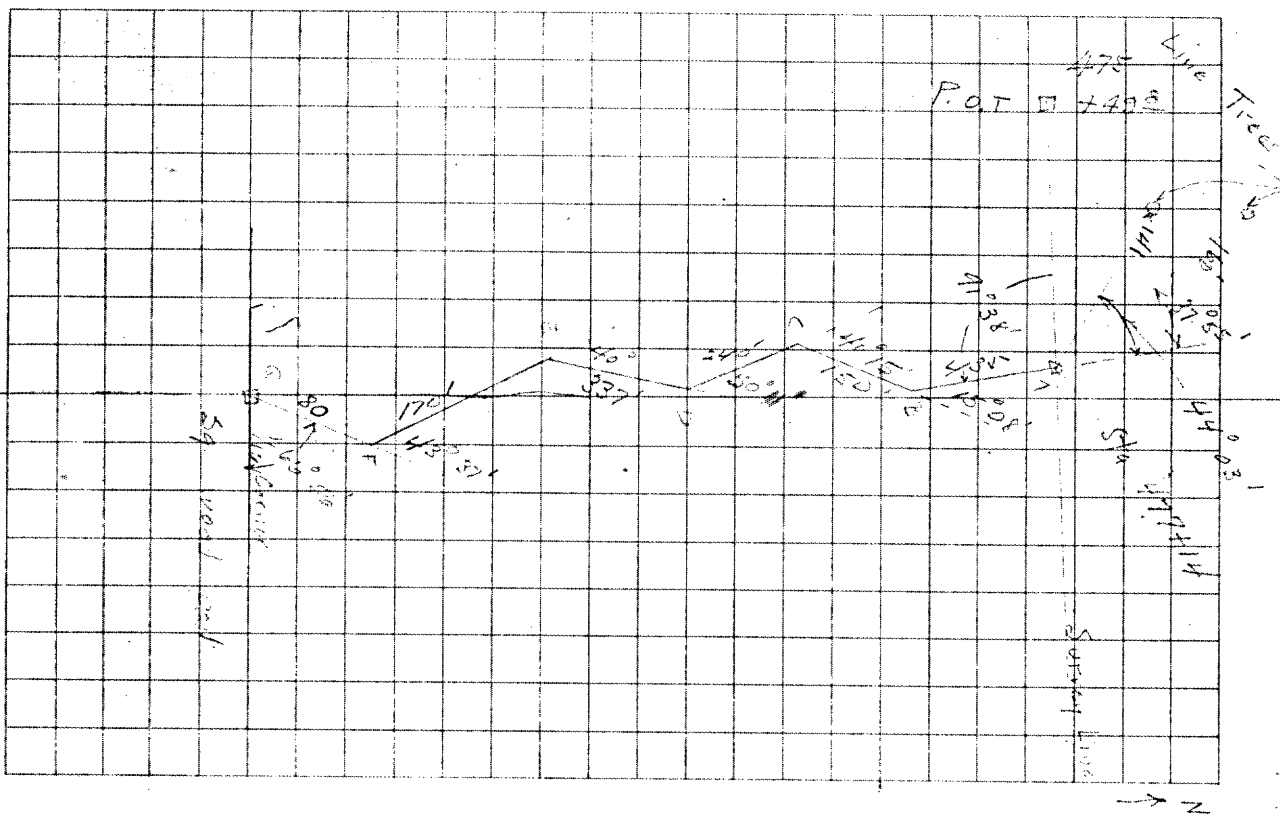
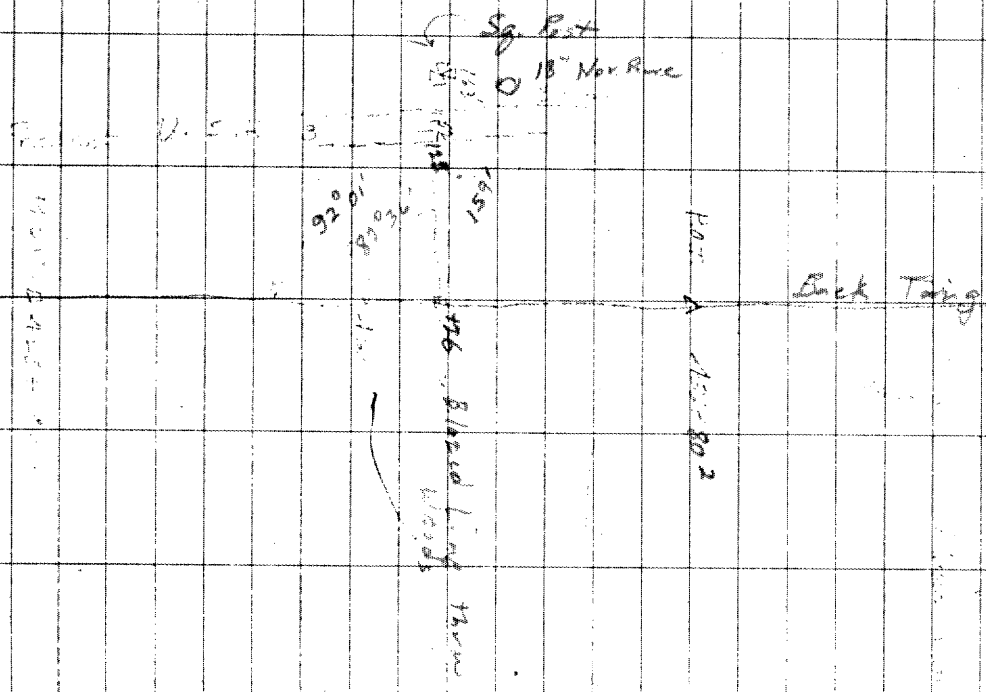
14

Sta 10

TO MONROE

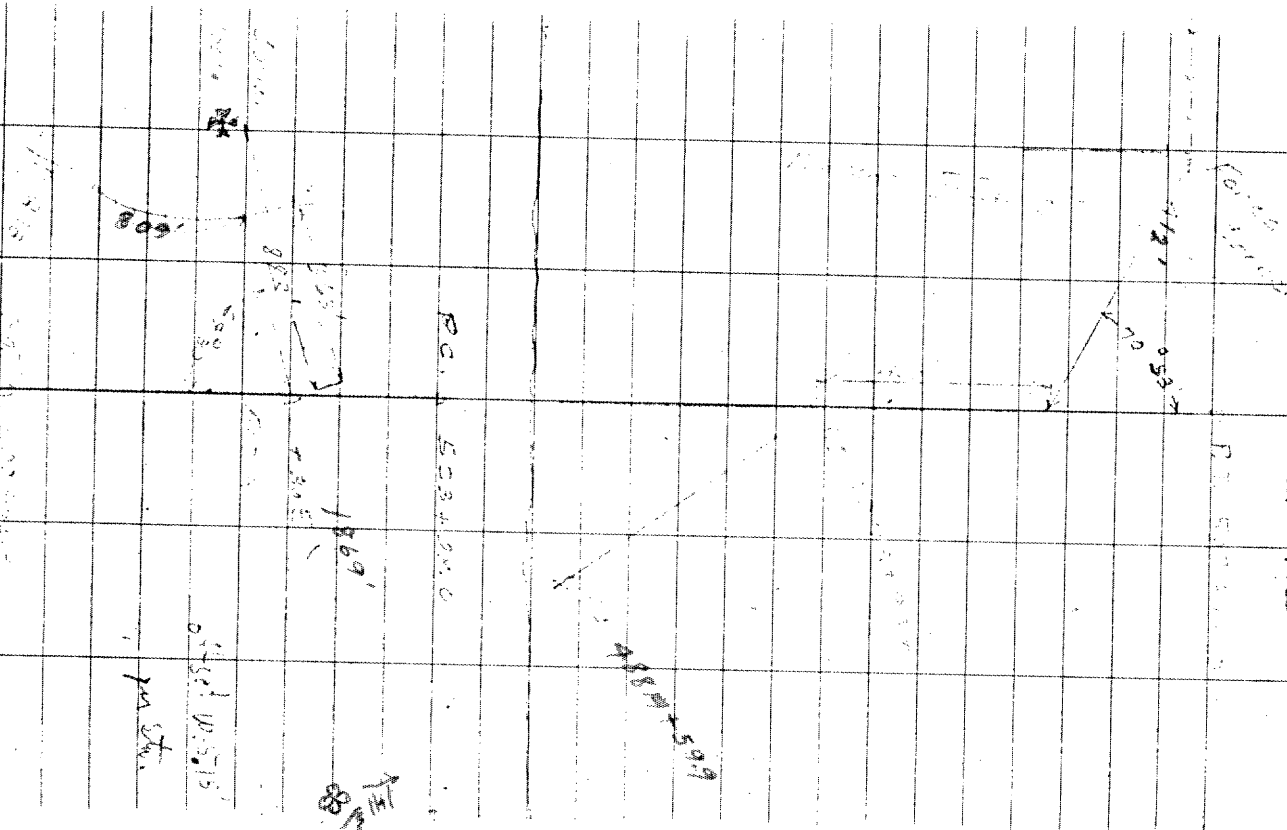
Job No 7047 Land Ties

N.B. 2994

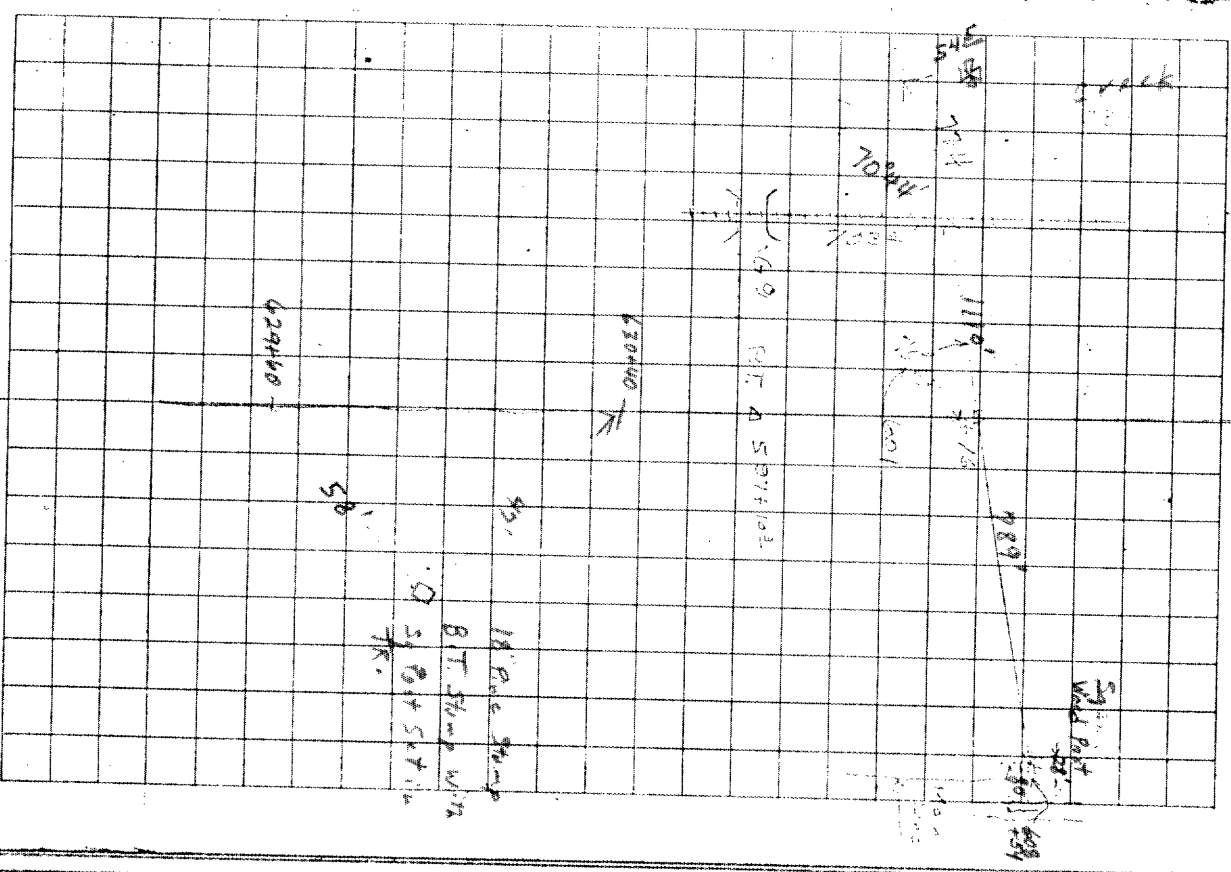


Job No 7047

Land Ties



N.B. 7794

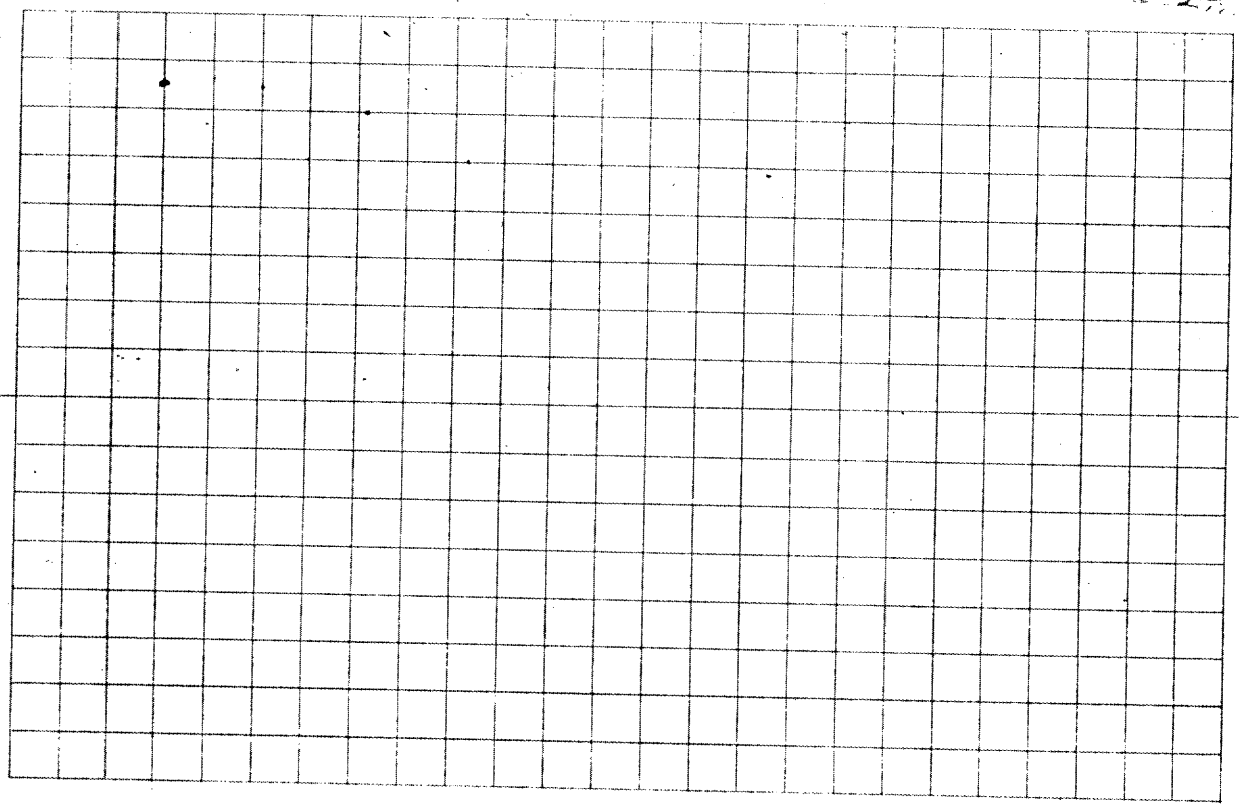
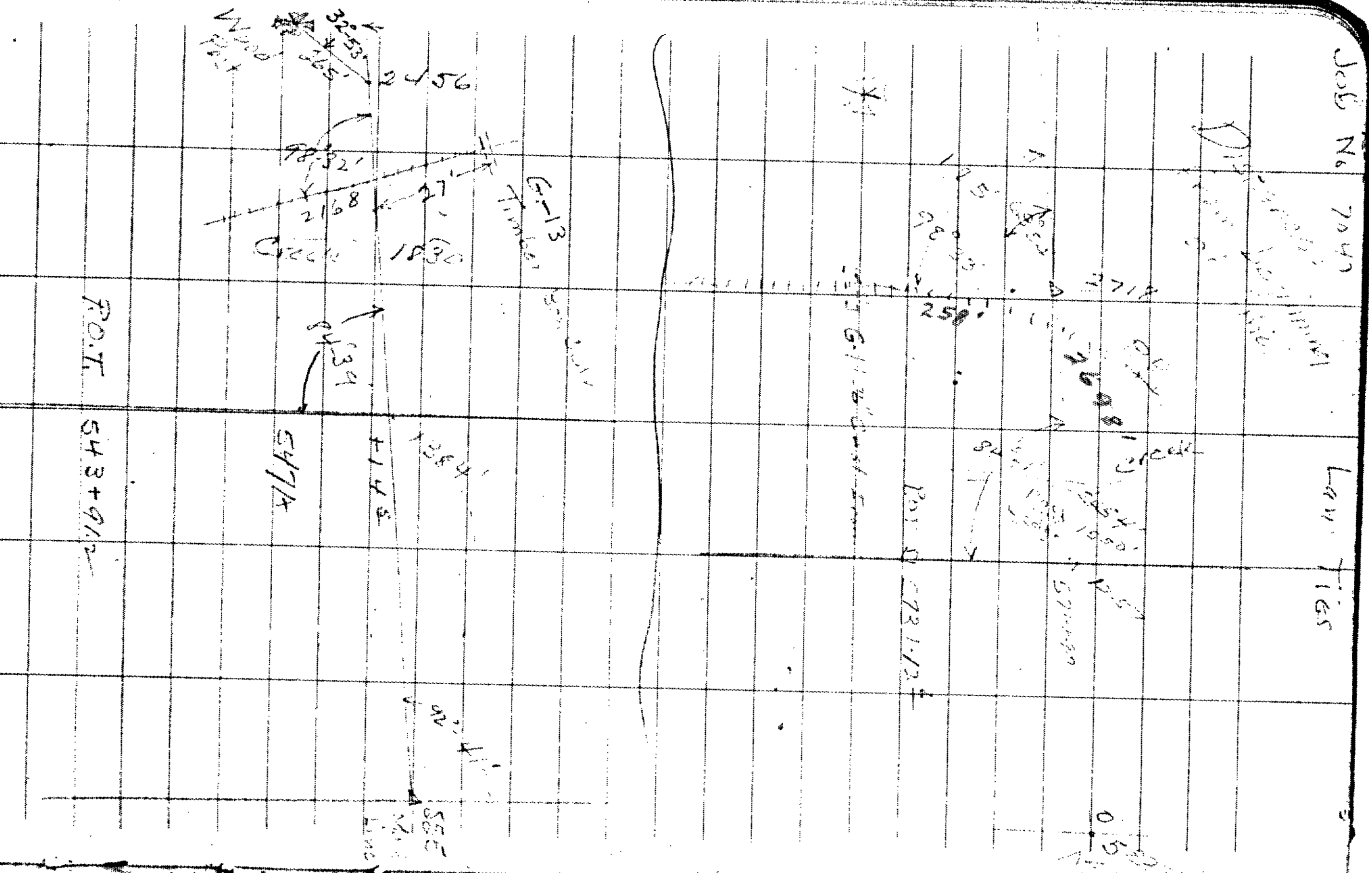


Job No 7043

Law Title

N.B. 9994

31



L293

20-21-28-29 Dec. Cor-216 Do. 0.0.6 West
From 1875
1875

D. S. No. 8

#26
+29

-460

+51 Logging

+71

-461

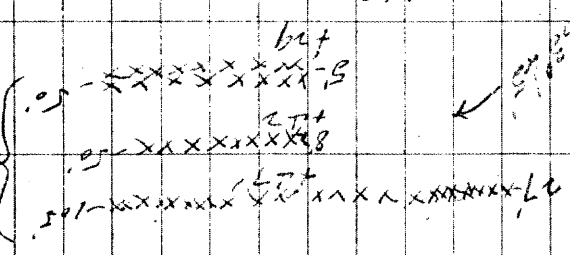
-463

-463

X50

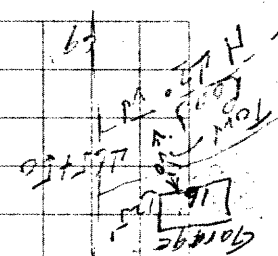
461-462
CIR. 25' L.S. also

Tiers of
11' Wood-6' high.



Stone
89
167+33

#11
902
880
+53
+77
+77



Scattered
Northern of Hill
105' not clear

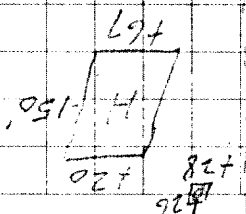
-464

-465

+511

-466

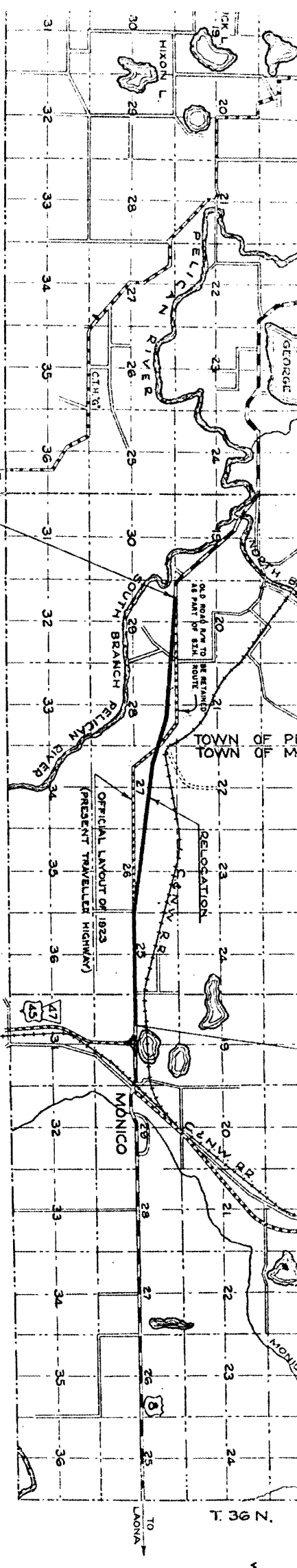
-467



Grub + clearing from sta. 465-511
25' on L.S. full width cut

X50

X50



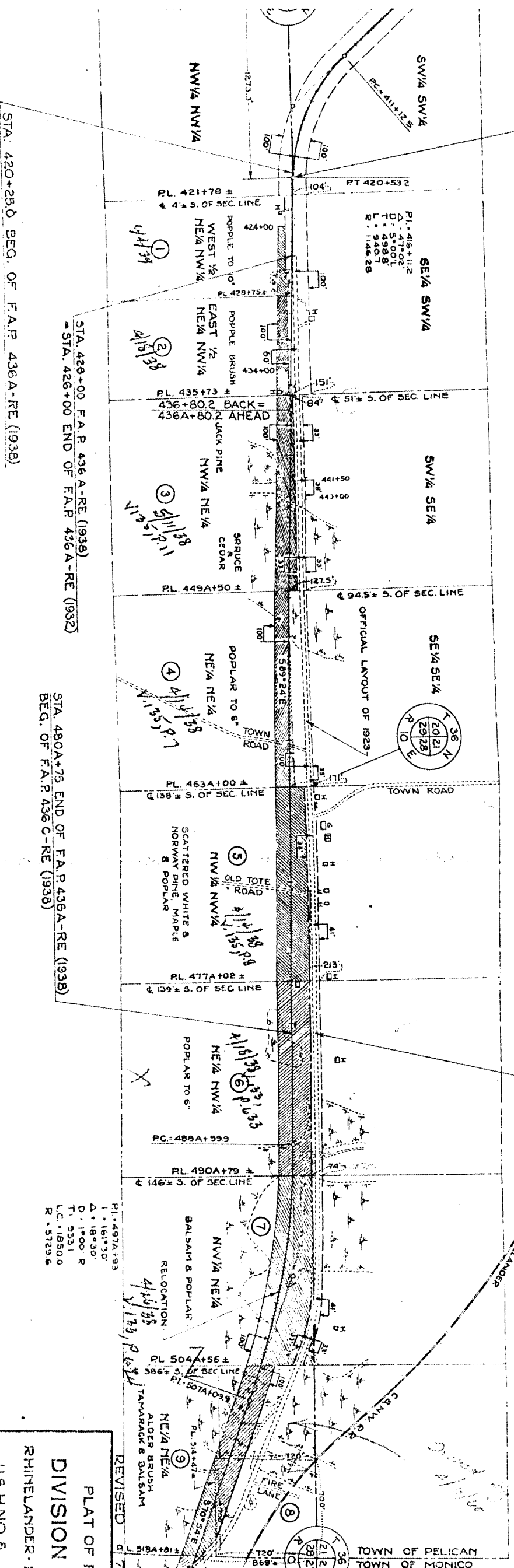
LOCATION SKETCH

SCALE

1/2 MILES

STA. 217+00 END OF F.A.P. 436A (1927)
 BEG. OF F.A.P. 436C (1928)

STA. 420+53.2 BEG. OF RELOC.
 ORDER DIV. JOB NO. 7047



STA. 420+25.0 BEG. OF F.A.P. 436A-RE (1938)

STA. 429+00 F.A.P. 436A-RE (1938)
 = STA. 426+00 END OF F.A.P. 436A-RE (1932)

STA. 480A+75 END OF F.A.P. 436A-RE (1938)
 BEG. OF F.A.P. 436C-RE (1938)

PL. 497A+93
 Δ = 18°30'
 D = 100' R
 T = 53.1
 L.C. = 185.0
 R = 572.6

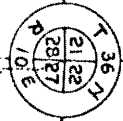
DRAWN BY E.H. RANDOLPH & C.J. WADZAK
 COMPUTED BY C.J. WADZAK
 CHECKED BY E.H. RANDOLPH

PLAT OF
 DIVISION
 RHINELANDER
 U.S.H.NO. 6

REVISED

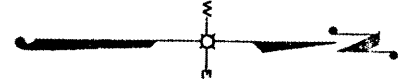
7293

TOWN OF PELICAN
TOWN OF MONICO



*4-14-38
V.135 P.5*

*Co. to Conts. 7/1/43 V.50 P.138
4/1/43 Owned by Conservator
11/5/43 V.145 P.574*



RELOCATION

STA. 578A+00 END OF F.A.P. 436 C-RE (1938)
BEG. OF F.A.P. 436 D-RE (1936)

STA. 322+68 END OF F.A.P. 436 C (1928)
BEG. OF F.A.P. 436 D (1929)

OFFICIAL LAYOUT OF 1823

1293

