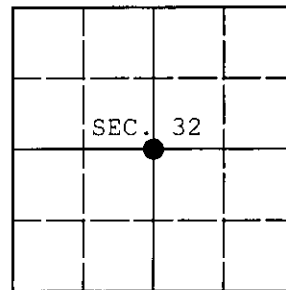


U.S. PUBLIC LAND SURVEY MONUMENT RECORD

Note: This form is intended and designed to fulfill all requirements of Wisconsin Administrative Code, Chapter A-E 7.08 U.S. Public Land Survey Monument Record (3) (a) (b) (c) (d) (e) (f) (g) (h) (i). An additional sheet may be added if necessary to conform with said requirements.

(a) CORNER LOCATION: WISCORS - Oneida County
 C 1/4 Cor. of Sec. 32 N: 137,446.08 USft
 Township 36 North E: 173,403.49 USft
 Range 6 East of the 4th P.M. Datum: NAD 1983(2011)
 Town of Nokomis County of Oneida



(b) HISTORY OF ORIGINAL CORNER ESTABLISHMENT

Original Surveyor: _____ Original Accessories: _____
 Date of Survey: Commenced: _____
 Completed: _____

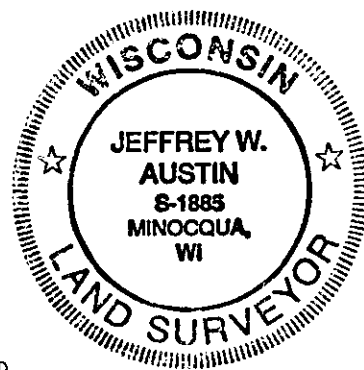
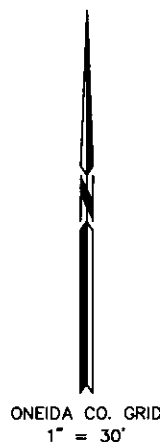
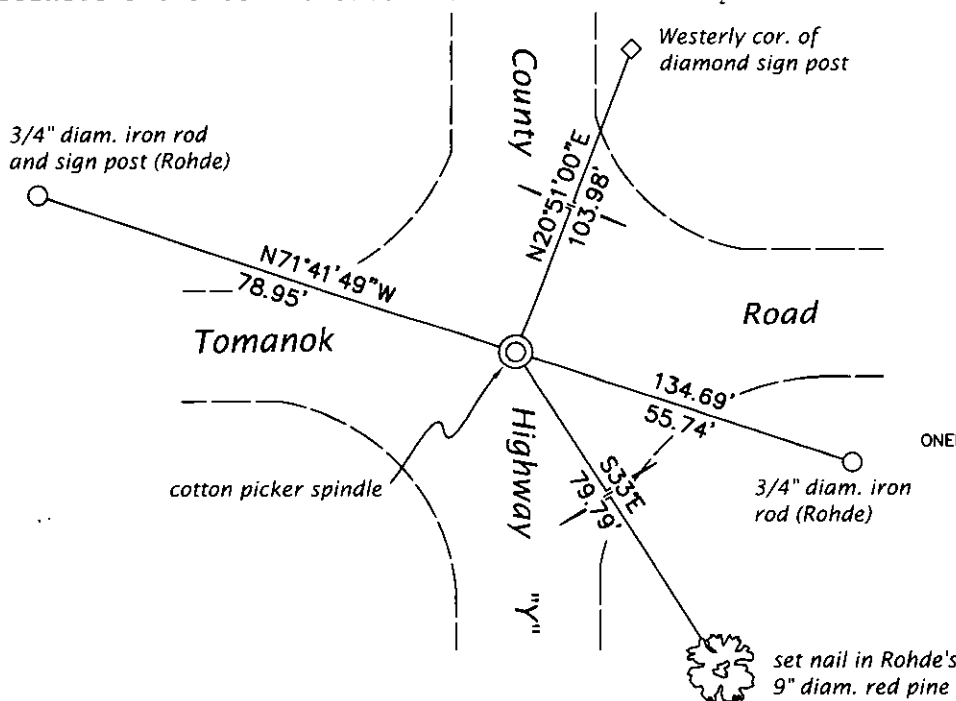
(b) (f) (g) (h) Description of monument found at this corner and if it was accepted, state all evidence (material, testimonial, occupational, plats, records, other monuments) used as a basis for accepting. If not accepted or if nothing was found, state evidence used as basis for establishing location. If re-established through lost corner proportionate methods, indicate all monuments, distances and directions used to establish. Indicate type of monument and sign post found or set.

This is a perpetuation of a Survey Landmark Preservation Record (L-2088) by William C. Rohde, RLS dated October 31, 2004 and filed in the office of the Oneida County Surveyor. A complete history of the corner can be found on the previous record. I accept the previous location as a true and faithful perpetuation or reestablishment of the original corner location and further perpetuate it as follows.

June 27, 2013: Prior to road construction, I found and accepted the record monument, a cotton picker spindle in the road intersection. I performed a GPS observation referenced to the WISCORS GNSS Network. I found or established accessories as shown below.

August 8, 2015: Following road construction, I returned and set a cotton picker spindle at the corner point from the reference monuments established previously. I performed a second GPS observation referenced to the WISCORS GNSS Network. The coordinates shown are the mean of the two observations that differed by 0.07 ft.

(c) (d) (e) Plan view of corner with ties to at least 4 witness monuments. If in disagreement with previously established corner, show the distances between the two corners and also indicate the ties to the disputed.



MAP **L3030**
 DATE FILED 10-16-15
 DESCRIPTION FILED
 ONEIDA CO. SURVEYOR'S OFFICE

Signature _____ Date Oct. 11, 2015