

A MAP OF SURVEY FOR

BILL SHIMEL

PART OF THE

NE 1/4 OF THE NW 1/4 & GOV'T LOT 3
SECTION 16, TOWNSHIP 36 NORTH, RANGE 8 EAST
TOWN OF CRESCENT, ONEIDA COUNTY, WISCONSIN



BASIS OF BEARINGS:
ALL BEARINGS IN
RELATION TO THE WEST
LINE OF SECTION 16
FROM WEST 1/4 CORNER,
NORTH TO GLC MEANDER
CORNER, RECORDED AS
AND ASSUMED TO BE
N00°-48'-00"E.

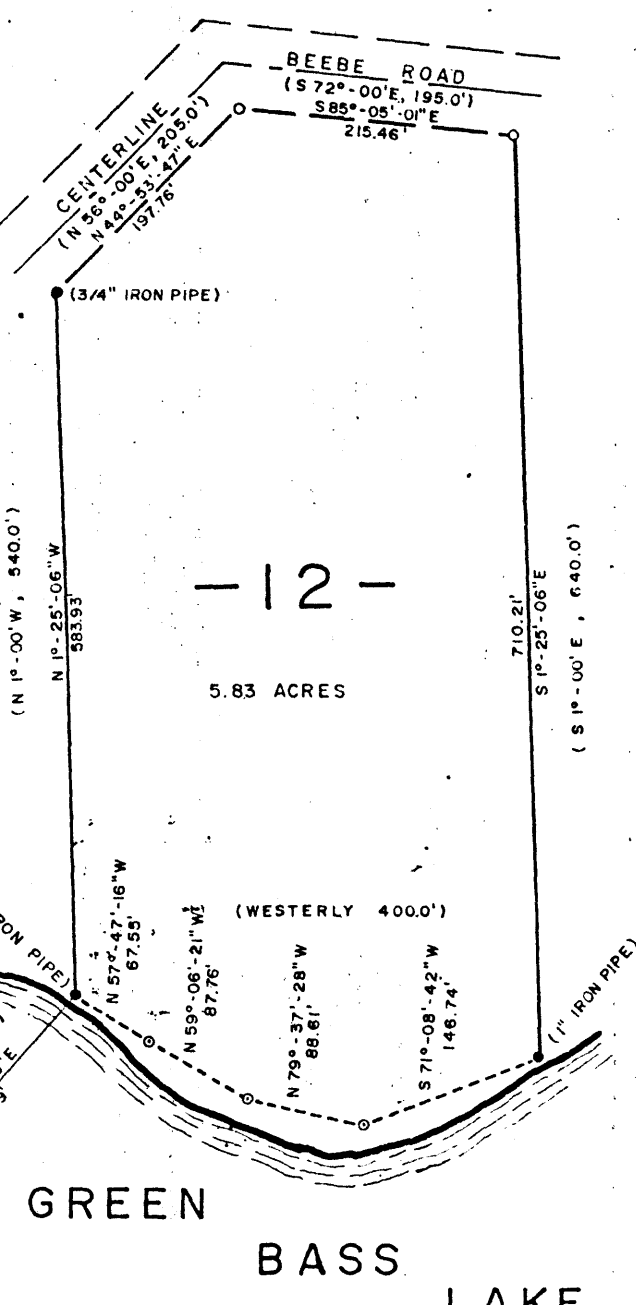
LEGEND

- FOUND MONUMENT (DESCRIPTION OF MONUMENT)
 - SET 1" x 24" ROUND IRON PIPE WEIGHING 1.68 LBS./LINEAR FT.
 - SET 1" x 30" ROUND IRON PIPE WEIGHING 1.68 LBS./LINEAR FT.
- (RECORDED BEARINGS AND DISTANCES)

SCALE 1" = 100'

DRAWN BY RJB

DATE AUGUST, 1978



- 12 -

5.83 ACRES

GREEN BASS LAKE

WEST 1/4 CORNER
(1 3/4" IRON PIPE WITH 3" SQUARE IRON CAP)



John B. Margitan 8/11/78
JOHN B. MARGITAN, S-1017

I HEREBY CERTIFY THAT THIS SURVEY IS CORRECT TO THE BEST OF MY KNOWLEDGE AND BELIEF.

DWG NO. 25/78

RONALD F. EDWARDS & ASSOCIATES, LTD.
A. I. A.
ARCHITECTS ENGINEERS SURVEYORS LAND PLANNERS