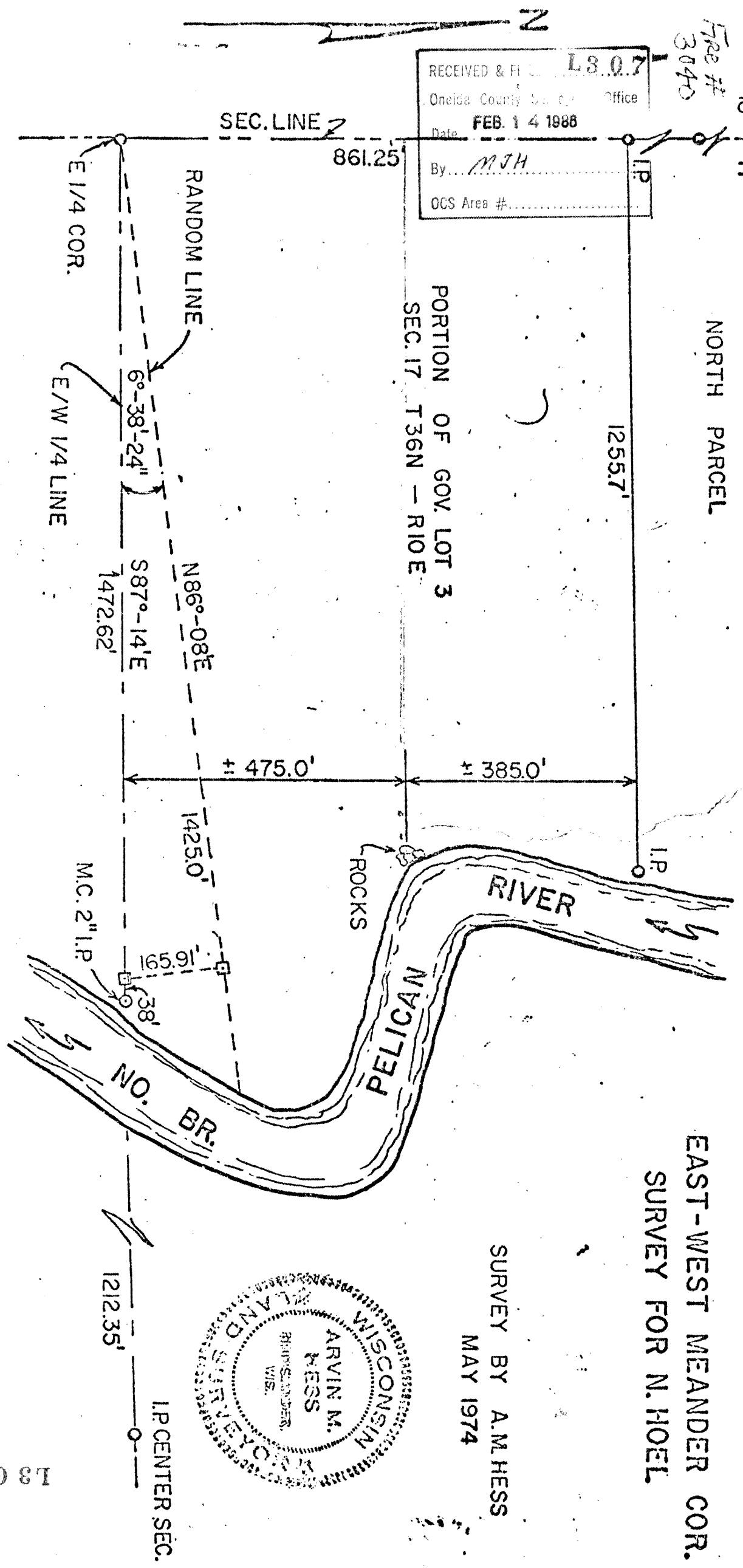


7
18
8
17

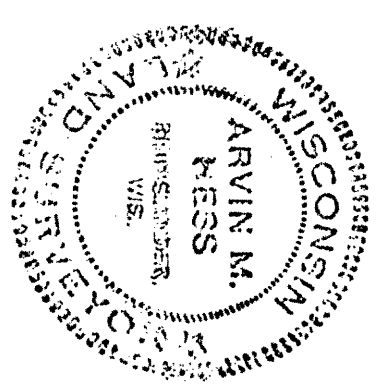
Free #
3040

RECEIVED & FILED L8.07
 Oneida County Survey Office
 Date FEB. 14 1988
 By M.J.H.
 OCS Area #



EAST-WEST MEANDER COR.
 SURVEY FOR N. HOEL

SURVEY BY A.M. HESS
 MAY 1974



LEGEND

- SCALE: 1" = 200'
- --- IRON PIPE IN PLACE
- --- IRON PIPE SET
- --- WOOD NUB

L8 07