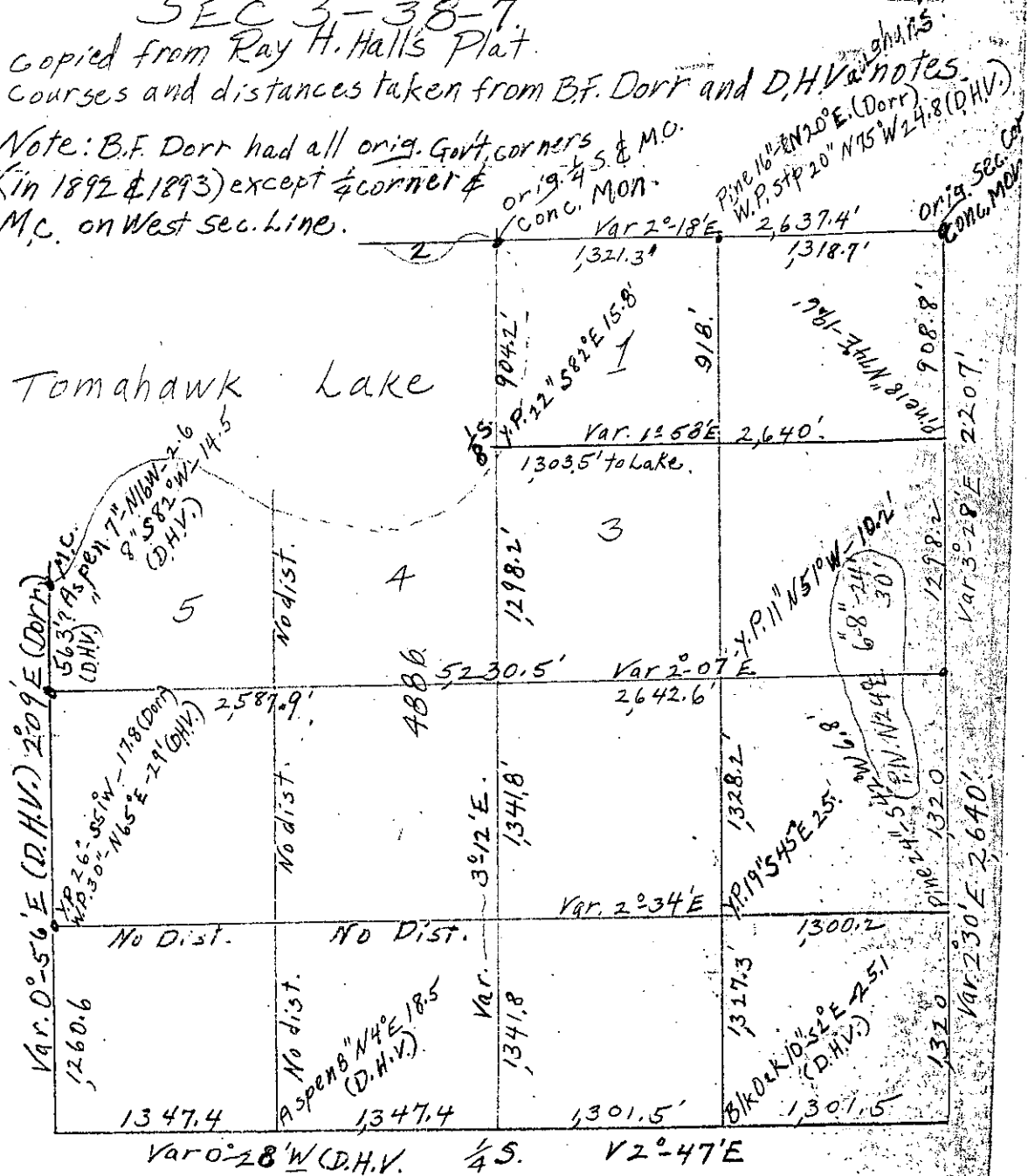


SEC 3-38-7
Copied from Ray H. Hall's Plat.
Courses and distances taken from B.F. Dorr and D.H.V. notes.

Note: B.F. Dorr had all orig. Govt. corners & M.O.
(in 1892 & 1893) except $\frac{1}{4}$ corner & orig. $\frac{1}{4}$ S. & M.O.
M.C. on West sec. line. / conc. MON.

Tomahawk Lake



MAP # **L3078**
 DATE FILED... 4/21/2016.
 BY... HB
 DESCRIPTION FILED.....
 ONEIDA CO. SURVEYOR'S OFFICE