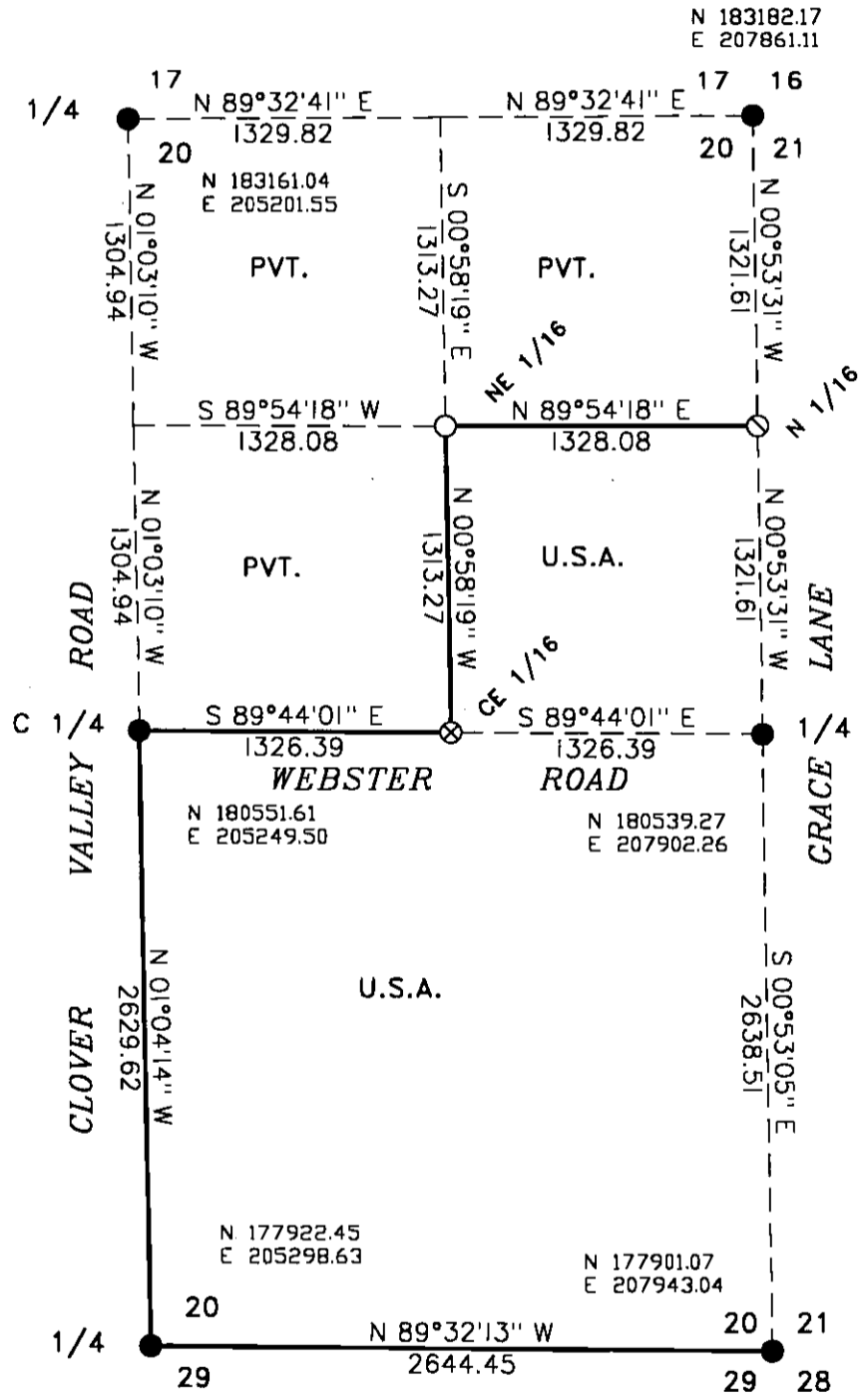




MAP OF SURVEY

U.S. GOVERNMENT LANDS BEING THE SE 1/4 AND SE 1/4 NE 1/4 OF SECTION 20, T 37 N, R 07 E, ONEIDA COUNTY, WISCONSIN.

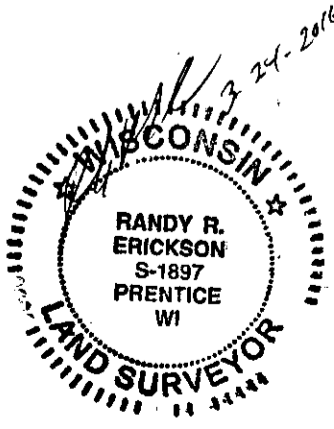
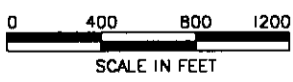
MAP # L3086
DATE FILED 5/12/2016
BY HB
DESCRIPTION
ONEIDA CO. SURVEYOR'S OFFICE



GRID NORTH, ONEIDA CO. COORDINATE SYSTEM, NAD 83 2011

LEGEND

- RECOVERED ONEIDA CO. MONUMENT OF RECORD.
RECOVERED IRON PIPE SET BY RLS #1234 IN 2015.
SET A 5/8" X 24" IRON REBAR.
SET A 1" X 32" ALUMINUM DRIVE MONUMENT WITH A 3" ALUM. CAP.M
FOREST SERVICE RESEARCH STATION BOUNDARY.



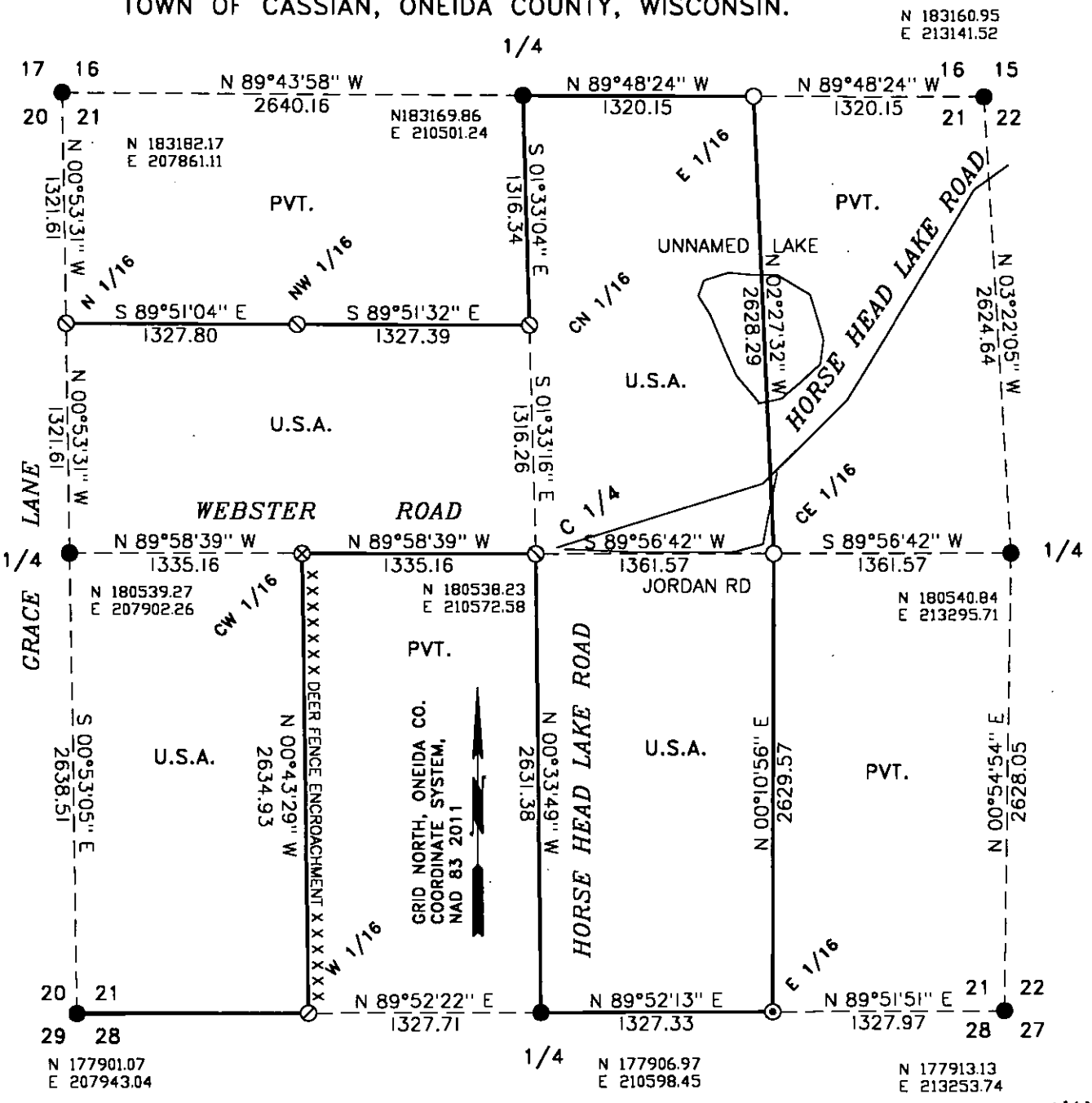


Stock No. 26273

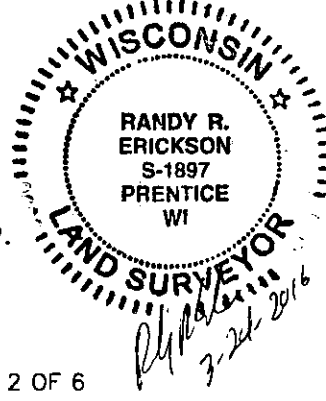
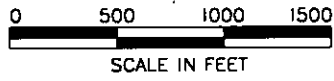
MAP #	L3086
DATE FILED	5/12/2016
BY	HB
DESC. 1111	
ONEIDA CO. SURVEYOR'S OFFICE	

MAP OF SURVEY

U.S. GOVERNMENT LANDS BEING THE WEST 1/2 SW 1/4,
 THE SOUTH 1/2 NW 1/4, THE WEST 1/2 NE 1/4, AND THE
 WEST 1/2 SE 1/4 OF SECTION 21, T 37 N, R 07 E,
 TOWN OF CASSIAN, ONEIDA COUNTY, WISCONSIN.



- RECOVERED ONEIDA CO. MONUMENT OF RECORD.
 - ⊙ RECOVERED IRON PIPE SET BY RLS #1234 IN 2015
 - ⊙ RECOVERED IRON PIPE SET BY RLS #1182 IN 2006.
 - ⊙ RECOVERED IRON PIPE FOUND BY RLS #2118 IN 2013.
 - ⊗ SET A 5/8" X 24" IRON REBAR.
 - SET A 1" X 32" ALUMINUM DRIVE MONUMENT WITH 3" ALUM CAP.
- (N 177901) ONEIDA COUNTY COORDINATES NAD 83 2011
- FOREST SERVICE RESEARCH STATION BOUNDARY.





Stock No. 26273

MAP #	L 3 0 8 6
DATE	5/12/2016
BY	HB
ONEIDA CO. SURVEYOR'S OFFICE	

**SURVEY NOTES SECTIONS 20 AND 21
TOWNSHIP 37 NORTH, RANGE 07 EAST, ONEIDA COUNTY, WISCONSIN**

THIS SURVEY WAS MADE BY THE U.S.D.A FOREST SERVICE AT THE REQUEST OF THE PROJECT LEADER OF THE NORTHERN RESEARCH STATION OF THE FOREST SERVICE IN RHINELANDER WISCONSIN. THE PURPOSE OF THIS SURVEY WAS TO RECOVER, RESTORE, ESTABLISH, MARK AND PERPETUATE THE CORNERS AND BOUNDARIES OF NATIONAL FOREST LANDS ON THE PERIMETER AND WITHIN SECTIONS 20 AND 21, TOWNSHIP 37 NORTH, RANGE 07 EAST, ONEIDA COUNTY, WISCONSIN.

ORIGINAL GOVERNMENT SURVEY OF SECTION LINES WAS MADE IN 1862 BY JOSEPH JENKINS.

THERE HAVE BEEN A MULTITUDE OF RETRACEMENTS AND SUBDIVISIONS OF SECTIONS 20 AND 21. THE PUBLIC LAND CORNERS ON THE PERIMETER OF SECTIONS 20 AND 21, APPEAR TO BE IN AGREEMENT WITH ALL SURVEYS OF RECORD.

THIS RETRACEMENT AND SUBDIVISION OF SECTION 20, FIT WELL WITH BOTH A 1989 SURVEY BY RLS #1234, AND A 1993 SURVEY BY RLS #1558.

SECTION 21 HAS HAD A HISTORICAL PROBLEM AT THE CENTER ¼. IT APPEARS THE CENTER OF SECTION WAS ESTABLISHED WHEN THE ROADS WERE LAID OUT IN THE 1920'S. A PIPE WAS APPARENTLY SET BY COUNTY SURVEYOR "MAINE" SOMETIME AFTER THAT. IN 1966 RLS #802, BELIEVED HE HAD RECOVERED THAT PIPE AND SUBDIVIDED THE NORTHEAST ¼ OF SECTION 21. BASED ON THE PIPE BEING AT THE CENTER OF SECTION.

IN 1996 RLS #1040 FOUND THE 1966 PIPE AT THE CENTER EAST 1/16 CORNER, BUT DID NOT RETRACE THE SECTION TO SEE IF IT WAS CORRECT.

IN 1998 RLS #841 FOUND A RR SPIKE AND AN IRON PIPE AT THE CENTER ¼ CORNER 5.87 FEET APART. THE IRON PIPE SUPPOSEDLY WHAT RLS #802 FOUND IN 1966. IN 2001 RLS #2343 SETS REFERENCES TO THE IRON PIPE PRIOR TO ROAD CONSTRUCTION. THE PIPE IS TAKEN OUT AT THIS POINT. THIS POINT IS 28.87 FEET EAST OF THE INTERSECTION OF STRAIGHT LINES AS SHOWN BY RLS #2118 IN 2013.

IN 2015, RLS #1234 IS ASKED TO SUBVIDE THE SECTION. THERE IS NO MONUMENT AT THE CENTER OF SECTION, AND THE CORNER TIES DO NOT MAKE SENSE. MR. REIN CONSULTS WITH COUNTY SURVEYOR, MIKE ROMPORTL TO FIGURE WHAT IS THE BEST POSITION FOR THE CENTER ¼. MR. REIN RETRACES THE ORIGINAL TRAVERSE OF THE ROAD SURVEY AND COMES UP WITH A POSITION HE FEELS REPRESENTS WHERE THE CENTER ¼ WAS FIRST ESTABLISHED.

I CONCLUDED THAT MR. REIN'S CORNER POSITION PROBABLY REPRESENTS WHERE THE CENTER ¼ SHOULD HAVE BEEN, EVEN THOUGH IT IS CURRENTLY NOT AT INTERSECTION OF STRAIGHT LINES.

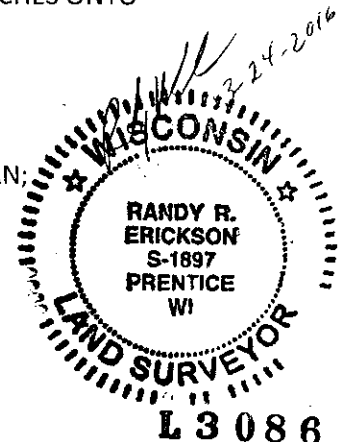
THIS SURVEY WAS MADE USING VRS GPS FOR BOTH THE CONTROL AND MARKING OF THE BOUNDARY LINES. GPS SURVEY STANDARDS WERE ADHERED TO IN THE PROCESS OF THE SURVEY. BEARINGS AND DISTANCES ARE GRID, BASED ON ONEIDA COUNTY COORDINATES, NAD 83, 2011.

BEARING TREES ARE BLAZED SCRIBED AND PAINTED RED. MEASUREMENTS TO BEARING TREES ARE TO METAL NAILS IN THE SIDE OF TREES ABOVE THE CENTER OF THE ROOT CROWN.

A SMALL AREA OF FIELD ENCROACHES ON NATIONAL FOREST LANDS IN THE SOUTHEAST CORNER OF THE SE ¼ SE ¼ OF SECTION 20. A FIELD ALSO ENCROACHES ON NATIONAL FOREST LANDS ALONG THE EAST LINE OF THE WEST ½ SE ¼ OF SECTION 21. A FOREST SERVICE DEER FENCE ENCROACHES ONTO PRIVATE LANDS ALONG THE WEST LINE OF THE EAST ½ SW ¼ OF SECTION 21.

SURVEY WAS MADE IN MARCH OF 2016 .

SURVEY CREW: RANDY ERICKSON, LAND SURVEYOR; GREG MAYER, SURVEYING TECHNICIAN;





Stock No. 26273

MAP #	L 3 0 8 6
DATE	5/12/2016
BY	HB
DEPT.	
ONEIDA CO. SURVEYOR'S OFFICE	

CORNERS RECOVERED

1. NORTH 1/4 CORNER SECTION 20, T 37 N, R 07 E.

RECOVERED MONUMENT AS SHOWN ON U.S. PUBLIC LAND SURVEY MONUMENT RECORD, N-7, T 37 N, R 7 E, ONEIDA COUNTY SURVEYOR RECORDS, FILED IN 1994 BY RLS #1558.

2. NORTHEAST CORNER SECTION 20, T 37 N, R 07 E.

RECOVERED MONUMENT AS SHOWN ON U.S. PUBLIC LAND SURVEY MONUMENT RECORD, N-9, T 37 N, R 7 E, ONEIDA COUNTY SURVEYOR RECORDS, FILED IN 1988 BY RLS #1558.

3. NORTH 1/4 CORNER SECTION 21, T 37 N, R 07 E.

RECOVERED MONUMENT AS SHOWN ON ONEIDA COUNTY MAP C2778 BY RLS #2118 IN 2013. HE STATES ON MAP: "CORNER TO BE REMONUMENTED". FOUND PLASTIC STAKE BY WILDERNESS SURVEYING, RLS #1234, WHO UTILIZED MONUMENT IN 2015.

4. NORTHEAST CORNER SECTION 21, T 37 N, R 07 E.

RECOVERED MONUMENT AS SHOWN ON U.S. PUBLIC LAND SURVEY MONUMENT RECORD, N-13, T 37 N, R 7 E, ONEIDA COUNTY SURVEYOR RECORDS, FILED IN 1987 BY RLS #802.

5. CENTER 1/4 CORNER SECTION 20, T 37 N, R 07 E.

RECOVERED MONUMENT AS SHOWN ON ONEIDA COUNTY MAP C 709 BY RLS #1234 IN 1989, AND ON ONEIDA COUNTY MAP A 679 BY RLS #1558 IN 1993.

6. QUARTER CORNER SECTIONS 20 AND 21, T 37 N, R 07 E.

RECOVERED MONUMENT AS SHOWN ON U.S. PUBLIC LAND SURVEY MONUMENT RECORD, P-9, T 37 N, R 7 E, ONEIDA COUNTY SURVEYOR RECORDS, FILED IN 1994 BY RLS #1558.

7. CENTER QUARTER CORNER SECTION 21, T 37 N, R 07 E.

RECOVERED MONUMENT AS SHOWN ON 2015 MAP BY RLS #1234.

8. QUARTER CORNER SECTION 21 AND 22, T 37 N, R 07 E.

RECOVERED MONUMENT AS SHOWN ON U.S. PUBLIC LAND SURVEY MONUMENT RECORD, P-13, T 37 N, R 7 E, ONEIDA COUNTY SURVEYOR RECORDS, FILED IN 1987 BY RLS #802.

9. SOUTH QUARTER CORNER OF SECTION 20, T 37 N, R 07 E.

RECOVERED MONUMENT AS SHOWN ON U.S. PUBLIC LAND SURVEY MONUMENT RECORD, R-7, T 37 N, R 7 E, ONEIDA COUNTY SURVEYOR RECORDS, FILED IN 1989 BY RLS #1234.

10. SOUTHEAST CORNER OF SECTION 20, T 37 N, R 07 E.

RECOVERED MONUMENT AS SHOWN ON U.S. PUBLIC LAND SURVEY MONUMENT RECORD, R-9, T 37 N, R 7 E, ONEIDA COUNTY SURVEYOR RECORDS, FILED IN 1998 BY RLS #841.

11. SOUTH QUARTER CORNER OF SECTION 21, T 37 N, R 07 E.

RECOVERED MONUMENT AS SHOWN ON U.S. PUBLIC LAND SURVEY MONUMENT RECORD, R-11, T 37 N, R 7 E, ONEIDA COUNTY SURVEYOR RECORDS, FILED IN 2006 BY RLS #2343.

12. SOUTHEAST CORNER OF SECTION 21, T 37 N, R 07 E.

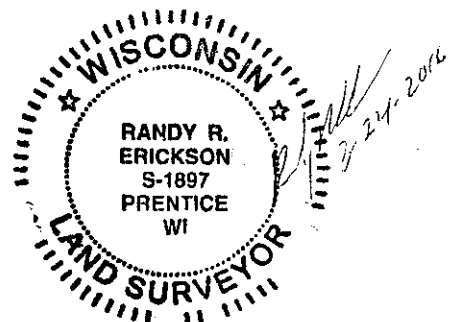
RECOVERED MONUMENT AS SHOWN ON U.S. PUBLIC LAND SURVEY MONUMENT RECORD, R-13, T 37 N, R 7 E, ONEIDA COUNTY SURVEYOR RECORDS, FILED IN 1986 BY RLS #1863.

13. NORTH 1/16 CORNER OF SECTION 20 AND 21, T 37 N, R 07 E.

RECOVERED MONUMENT AS SHOWN ON 2015 MAP BY RLS #1234.

14. NORTHWEST 1/16 CORNER OF SECTION 21, T 37 N, R 07 E.

RECOVERED MONUMENT AS SHOWN ON 2015 MAP BY RLS #1234.





Stock No. 26273

MAP #	L3086
DATE FIELD	5/12/2016
BY	HB
DESCR	
ONEIDA CO. SURVEYOR'S OFFICE	

15. CENTER NORTH 1/16 CORNER OF SECTION 21, T 37 N, R 07 E.
RECOVERED MONUMENT AS SHOWN ON 2015 MAP BY RLS #1234.

16. WEST 1/16 CORNER OF SECTION 21 AND 28, T 37 N, R 07 E.
RECOVERED MONUMENT AS SHOWN ON 2006 MAP A 1793 BY RLS #1182.

17. EAST 1/16 CORNER OF SECTION 21 AND 28, T 37 N, R 07 E.
RECOVERED MONUMENT AS SHOWN ON 2013 MAP C 2778 BY RLS #2118.

CORNERS ESTABLISHED

1. EAST 1/16 CORNER SECTIONS 16 AND 21, T 37 N, R 07 E.

ESTABLISHED CORNER MID POINT ON LINE BETWEEN THE NORTHEAST AND NORTH 1/4 CORNERS OF SECTION 21. SET A 1" X 32" ALUMINUM DRIVE MONUMENT WITH A 3" ALUMINUM CAP STAMPED TO IDENTIFY THE CORNER. MONUMENT EXTENDS 6" ABOVE THE GROUND. MARKED BEARING TREES:

WHITE PINE	4"	N 05° W	17.25 FEET
STEEL SIGN POST		SOUTH	0.5 FEET
T- POST		WEST	1.0 FEET
IRON PIPE		N 80° E	2.40 FEET

2. NORTHEAST 1/16 CORNER SECTION 20 , T 37 N, R 07 E.

ESTABLISHED CORNER AT INTERSECTION OF STRAIGHT LINES BETWEEN OPPOSING 1/16 CORNERS ON THE PERIMETER OF THE NORTHEAST 1/4 OF SECTION 20. SET A 1" X 32" ALUMINUM DRIVE MONUMENT WITH A 3" ALUMINUM CAP STAMPED TO IDENTIFY THE CORNER. MONUMENT EXTENDS 6" ABOVE GROUND. MARKED BEARING TREES:

OAK	13"	N 26° E	22.69 FEET
OAK	4"	S 86° E	38.39 FEET
STEEL T- POST		SOUTH	0.4 FEET

3. CENTER EAST 1/16 CORNER SECTION 20, T 37 N, R 07 E.

ESTABLISHED CORNER MID POINT ON LINE BETWEEN THE CENTER 1/4 AND EAST 1/4 CORNERS OF SECTION 20. SET A 3/4" X 24" IRON REBAR IN ROAD 6" BELOW ROAD SURFACE, 0.8 FEET SOUTH OF CENTER LINE OF WEBSTER ROAD. MARKED BEARING TREES:

RED PINE	13"	N 35° E	45.75 FEET
WHITE PINE	6"	S 33° E	36.50 FEET
STEEL T- POST		NORTH	37.9 FEET

4. CENTER WEST 1/16 CORNER SECTION 21, T 77 N, R 07 E.

ESTABLISHED CORNER MID POINT ON LINE BETWEEN THE WEST 1/4 AND CENTER 1/4 CORNERS OF SECTION 21. SET A 3/4" X 24" IRON REBAR IN ROAD AT CORNER 4" BELOW ROAD SURFACE, 1.5 FEET SOUTH OF CENTER LINE OF WEBSTER ROAD. MARKED BEARING TREES:

RED PINE	13"	N 04° W	32.21 FEET
RED PINE	7"	N 20° W	38.19 FEET
STEEL T-POST		SOUTH	57.3 FEET
EAST METAL GATE POST		S 45° W	46.2 FEET

5. CENTER EAST 1/16 CORNER SECTION 21, T 37 N, R 07 E.

ESTABLISHED CORNER MID POINT ON LINE BETWEEN THE CENTER 1/4 AND EAST 1/4 CORNERS OF SECTION 21. SET A 1" X 32" ALUMINUM DRIVE MONUMENT WITH A 3" ALUMINUM CAP STAMPED TO IDENTIFY THE CORNER. MONUMENT EXTENDS 7" ABOVE GROUND. MARKED BEARING TREES:

ASPEN	6"	N 15° W	12.50 FEET
IRON PIPE BY RLS #802		N 65° E	3.51 FEET
STEEL SIGN POST		NORTH	1.1 FEET
IRON AXEL UNKNOWN ORIGIN		S 64° E	9.07 FEET





Stock No. 26273

MAP #	L3086
DATE FILED	5/12/2016
BY	HB
DESCRIPTION	
ONEIDA CO. SURVEYOR'S OFFICE	

SURVEYOR'S AFFIDAVIT

STATE OF WISCONSIN)
COUNTY OF ONEIDA) SS

I RANDY R. ERICKSON, LAND SURVEYOR FOR THE U.S.D.A. FOREST SERVICE AND A PROFESSIONAL LAND SURVEYOR IN THE STATE OF WISCONSIN DO HEREBY CERTIFY THAT I HAVE SURVEYED AND SUBDIVIDED SECTIONS 20 AND 21, TOWNSHIP 37 NORTH, RANGE 07 EAST, 4TH P.M., ONEIDA COUNTY, WISCONSIN. DURING THIS SURVEY I HAVE COMPLIED WITH THE RULES OF THE DIVISION OF THE PUBLIC LANDS AND APPLICABLE STATE RULES. THE MAP AND ACCOMPANYING NOTES ARE A CORRECT AND ACCURATE REPRESENTATION OF THE SURVEY TO THE BEST OF MY KNOWLEDGE AND BELIEF.

RANDY R. ERICKSON
WIS. PROFESSIONAL SURVEYOR #1897

DATE: 03-24-2016

PAGE 6 OF 6

