

LAND CORNER PRESERVATION RECORD

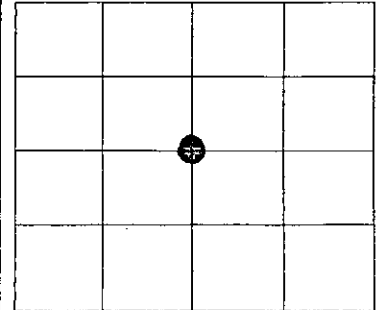
It is the purpose of this record to preserve the location of a survey or land corner monument that may be disturbed, removed or inaccessible due to road construction or other activity.

County: Oneida	City, Village, Town: Enterprise	Section: 21	Town: T35N	Range: R10E
-------------------	------------------------------------	----------------	---------------	----------------

Describe what was found, its location and origin. If known, describe if the monument found is a 1/16 corner or other subdivisional corner; a monument called for in a deed; a monument shown on a survey map or plat etc and in what GL or 1/4 - 1/4 section or subdivision the monument is located.

Approximate location within Section 21

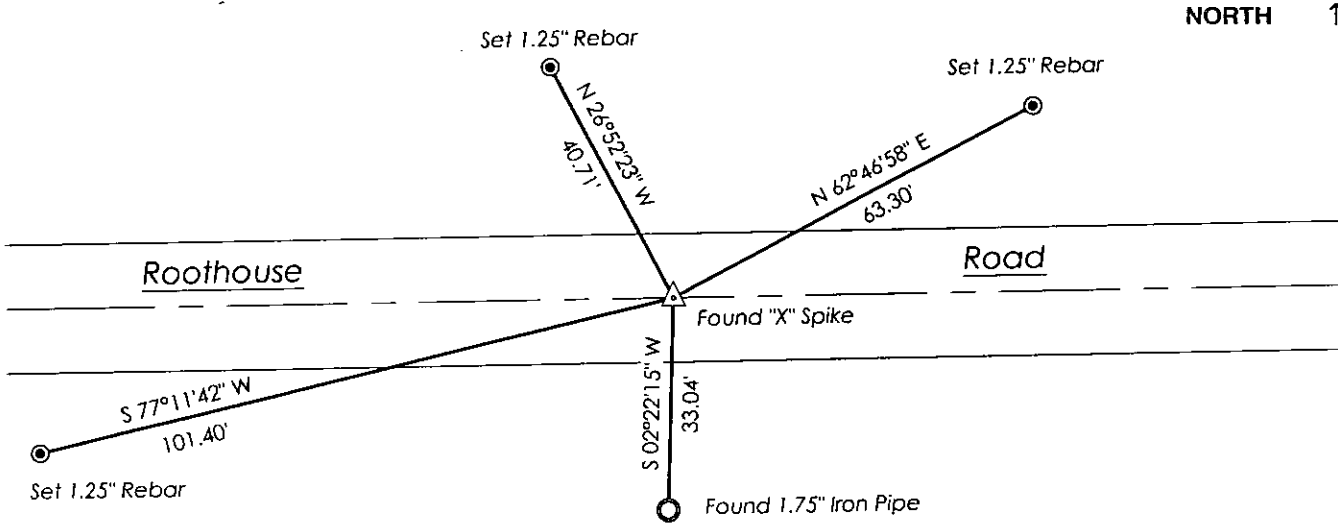
6/14/2016 I found a spike with a large cross on the head that was set by Loftus on April 7, 2003 as shown on survey map B7177, as well as referenced on map B7702. Found existing iron pipe to the South as shown on map B7177 and set three other monuments for reference to reset corner after construction. GPS'ed corner location in Oneida County Coordinate System in NAD 83 (2011).



N: 116,135.17
E: 306,105.05

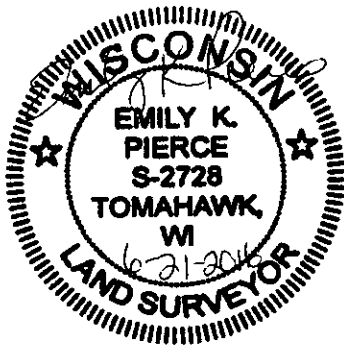
MAP # **L3088** ✓
 DATE FILED.....**7/19/16**.....
 BY.....**HB**.....
 DESCRIPTION FILED.....
 ONEIDA CO. SURVEYOR'S OFFICE

Plan view map of landmark monument location with bearing and distance ties to a minimum of four described witness or reference monuments of concrete, natural stone, metal, live bearing trees or equivalent material or indicate datum & coordinates if tied out using GPS. Indicate what was reset.



NORTH ↑

Seal:



PROFESSIONAL LAND SURVEYOR CERTIFICATE:

This land corner was referenced out in advance of road construction or other activity as an act of preserving survey evidence or monuments. This corner has not been tested for its accuracy during the course of this preservation. It is recommended that those using the corner position evaluate and verify it prior to use in a survey or other use.

I hereby certify that I am a duly licensed Professional Land Surveyor in the State of Wisconsin; that the location of this Survey or Land Corner was referenced by me or under my direct supervision and control and that the information shown on this record is true and correct to the best of my knowledge and belief.

Emily K. Pierce
Signature

6-21-2016
Date