

U.S. PUBLIC LAND SURVEY MONUMENT RECORD

NOTE: This form is intended and designed to fulfill all requirements of Wisconsin Administrative Code, Chapter A-E 7.08 U.S. Public Land Survey Monument Record. An additional sheet may be added if necessary to conform with said requirements.

CORNER LOCATION

Section Corner common to Sections 15, 16, 21, and 22
Township 35 North, Range 10 East of the 4th P.M.
Town of Shoepke/Enterprise, Oneida County, Wisconsin

HISTORY OF ORIGINAL CORNER ESTABLISHMENT

ORIGINAL SURVEYOR: James Nowlin
DATE OF SURVEY: 1865
ORIGINAL ACCESSORIES: 12" Tamarack, S56°W, 100 lks
8" Tamarack, N70°E, 50 lks

6	5	4	3	2	1
7	8	9	10	11	12
18	17	16	15	14	13
19	20	21	22	23	24
30	29	28	27	26	25
31	32	33	34	35	36

T35N - R10E

DESCRIPTION OF MONUMENT FOUND AT THIS CORNER AND IF IT WAS ACCEPTED, STATE ALL EVIDENCE (MATERIAL, TESTIMONIAL, OCCUPATIONAL, PLATS, RECORDS, OTHER MONUMENTS) USED AS A BASIS FOR ACCEPTING. IF NOT ACCEPTED OR IF NOTHING WAS FOUND, STATE EVIDENCE USED AS BASIS FOR ESTABLISHING LOCATION. IF RE-ESTABLISHED THROUGH LOST CORNER PROPORTIONATE METHODS, INDICATE ALL MONUMENTS, DISTANCES AND DIRECTIONS USED TO ESTABLISH. INDICATE TYPE OF MONUMENT AND SIGN POST FOUND OR SET.

1949 F.R. Wincentsen found corner in road, and old B.T.'s 217' east to 5'x 5" post m.c. E 1/4 Sec. 21, 2622.80' south. (see Genisot map 627-1)

1967 F.R. Wincentsen, County Surveyor, set corner in road.

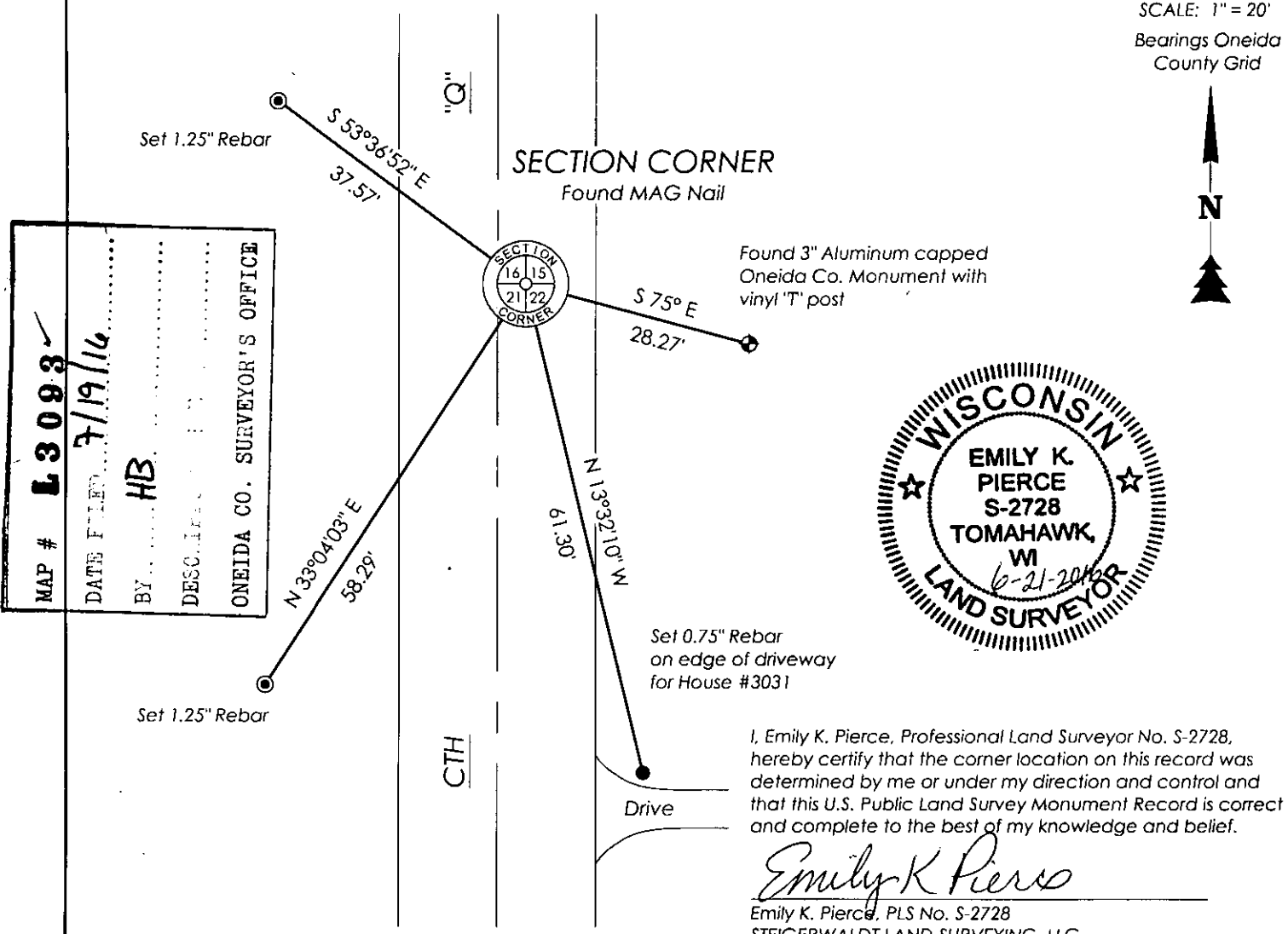
1990 Kelly found iron below surface of road. Set R.R. Spike over iron. Set alum. mon. east of corner. Set post next to mon. marked bearing trees.

10/2004 Russell Brown reset corner after road construction, by GPS coordinates given by Oneida County LIO. Base station was Harn #239s using Trimble 5700/5800. Found Kelly's wit. mon. to be 0.4' out from his position and no other B.T.'s were found. 8" Norway N50°E could have been an old B.T. from Kelly, however Brown found no evidence of a nail (as Kelly stated). Made new B.T.'s as shown on 2004 tiesheet.

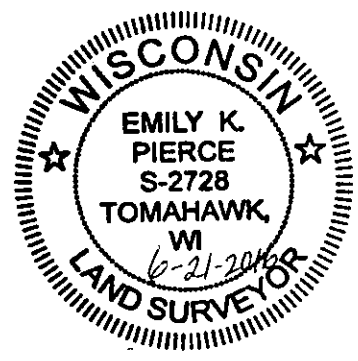
6/14/2016 I visited corner location and found mag nail in northbound lane of CTH Q. I also found aluminum witness monument to the east. Set three additional ties to the NW, SW, and SE to aid in resetting corner after upcoming road construction. Checked tie and accepted mag nail as being in the corner location. GPS'ed corner location in Oneida Co. Coordinates based in NAD 83-2011 with the corner location at N: 118,814.44 E: 308,883.04

PLAN VIEW OF CORNER WITH TIES TO AT LEAST 4 WITNESS MONUMENTS. IF IN DISAGREEMENT WITH PREVIOUSLY ESTABLISHED CORNER, SHOW THE DISTANCES BETWEEN THE TWO CORNERS AND ALSO INDICATE THE TIES TO THE DISPUTED.

SCALE: 1" = 20'
Bearings Oneida County Grid



MAP # **L 3 0 9 3** ✓
 DATE FILED **7/19/16**
 BY **HB**
 ONEIDA CO. SURVEYOR'S OFFICE



I, Emily K. Pierce, Professional Land Surveyor No. S-2728, hereby certify that the corner location on this record was determined by me or under my direction and control and that this U.S. Public Land Survey Monument Record is correct and complete to the best of my knowledge and belief.

Emily K. Pierce

Emily K. Pierce, PLS No. S-2728
STEIGERWALDT LAND SURVEYING, LLC

3510160000