

U.S. PUBLIC LAND SURVEY MONUMENT RECORD

NOTE: This form is intended and designed to fulfill all requirements of Wisconsin Administrative Code, Chapter A-E 7.08 U.S. Public Land Survey Monument Record. An additional sheet may be added if necessary to conform with said requirements.

CORNER LOCATION

Quarter Corner common to Sections 21 and 22
Township 35 North, Range 10 East of the 4th P.M.
Town of Enterprise, Oneida County, Wisconsin

HISTORY OF ORIGINAL CORNER ESTABLISHMENT

ORIGINAL SURVEYOR: James Nowlin
DATE OF SURVEY: 1865
ORIGINAL ACCESSORIES: 12" Tamarack, S23°E, 20 lks
14" Tamarack, N27%W, 18 lks

6	5	4	3	2	1
7	8	9	10	11	12
18	17	16	15	14	13
19	20	21	22	23	24
30	29	28	27	26	25
31	32	33	34	35	36

T35N - R10E

DESCRIPTION OF MONUMENT FOUND AT THIS CORNER AND IF IT WAS ACCEPTED, STATE ALL EVIDENCE (MATERIAL, TESTIMONIAL, OCCUPATIONAL, PLATS, RECORDS, OTHER MONUMENTS) USED AS A BASIS FOR ACCEPTING. IF NOT ACCEPTED OR IF NOTHING WAS FOUND, STATE EVIDENCE USED AS BASIS FOR ESTABLISHING LOCATION. IF RE-ESTABLISHED THROUGH LOST CORNER PROPORTIONATE METHODS, INDICATE ALL MONUMENTS, DISTANCES AND DIRECTIONS USED TO ESTABLISH. INDICATE TYPE OF MONUMENT AND SIGN POST FOUND OR SET.

1929 H.C. Hall identified original corner in cross roads by old B.T. stump.

1967 F.R. Wincentsen set iron pipe 33' east of corner (pipe removed during boat landing construction).

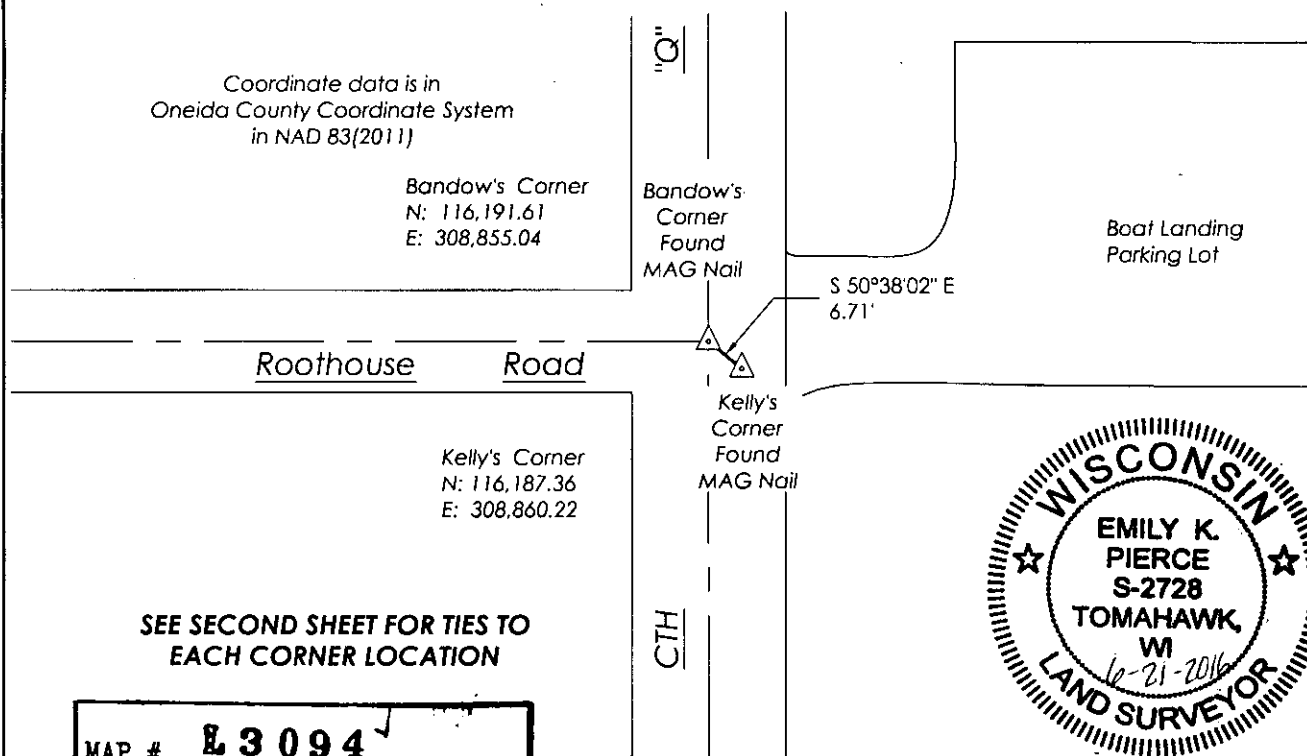
1990 William Kelly found iron under surface of road, set R.R. spike over iron. Set 3" aluminum witness monument northeast of corner.

2002 William Bandow found 1/2" iron pipe near the intersection of centerlines and accepted. Found Kelly's R.R. spike SE of corner and made B.T.s and set two witness iron pipes.

2004 Russell Brown found both Kelly's and Bandow's corners to be gone due to road construction. Found Oneida County monument to the northeast lying on the ground. Reset mag nail for Bandow corner from 2 remaining ties. Using Trimble 5700/5800 and Harn base station 239s acquired coords on Bandow corner and from coords given by Land Information Office Brown found to fit Kelly's corner very well base on one remaining witness to the southeast and distance to Bandow corner. To the best of Brown's knowledge, the corner by Kelly was used and fits previous surveys to the north, and Bandow's corner was used for surveys to the south. Brown tied both corners as shown on his tiesheet.

6/14/2016 I visited corner location and found MAG nails at both Kelly's corner location and Bandow's corner location. I also found two remaining ties and a R.R. spike in the blacktop of Roothouse Rd and a 3.5" Oneida County aluminum monument. I located both corners, the remaining ties and set three new ties to aid in corner recovery after road construction. GPS observations are shown below and measurements from each corner to all corners ties are shown on second sheet.

PLAN VIEW OF CORNER WITH TIES TO AT LEAST 4 WITNESS MONUMENTS. IF IN DISAGREEMENT WITH PREVIOUSLY ESTABLISHED CORNER, SHOW THE DISTANCES BETWEEN THE TWO CORNERS AND ALSO INDICATE THE TIES TO THE DISPUTED.



Coordinate data is in
Oneida County Coordinate System
in NAD 83(2011)

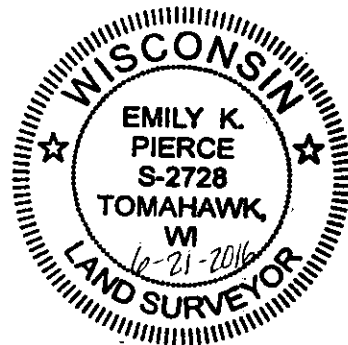
Bandow's Corner
N: 116,191.61
E: 308,855.04

Roothouse Road

Kelly's Corner
N: 116,187.36
E: 308,860.22

SEE SECOND SHEET FOR TIES TO
EACH CORNER LOCATION

MAP # **L3094**
 DATE FILED **7/19/16**
 BY **HB**
 DESCRIPTION OF RECORD
 ONEIDA CO. SURVEYOR'S OFFICE



I, Emily K. Pierce, Professional Land Surveyor No. S-2728, hereby certify that the corner location on this record was determined by me or under my direction and control and that this U.S. Public Land Survey Monument Record is correct and complete to the best of my knowledge and belief.

Emily K. Pierce
Emily K. Pierce, PLS No. S-2728
STEIGERWALDT LAND SURVEYING, LLC

U.S. PUBLIC LAND SURVEY MONUMENT RECORD

NOTE: This form is intended and designed to fulfill all requirements of Wisconsin Administrative Code, Chapter A-E 7.08 U.S. Public Land Survey Monument Record. An additional sheet may be added if necessary to conform with said requirements.

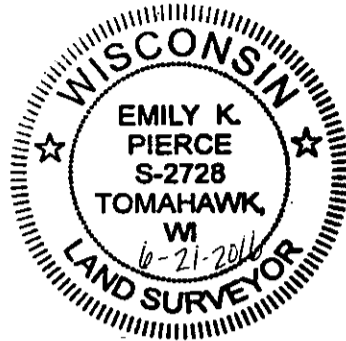
CORNER LOCATION

Quarter Corner common to Sections 21 and 22
Township 35 North, Range 10 East of the 4th P.M.
Town of Enterprise, Oneida County, Wisconsin

I, Emily K. Pierce, Professional Land Surveyor No. S-2728, hereby certify that the corner location on this record was determined by me or under my direction and control and that this U.S. Public Land Survey Monument Record is correct and complete to the best of my knowledge and belief.

Emily K Pierce

Emily K. Pierce, P.L.S. No. S-2728
STEIGERWALDT LAND SURVEYING, LLC



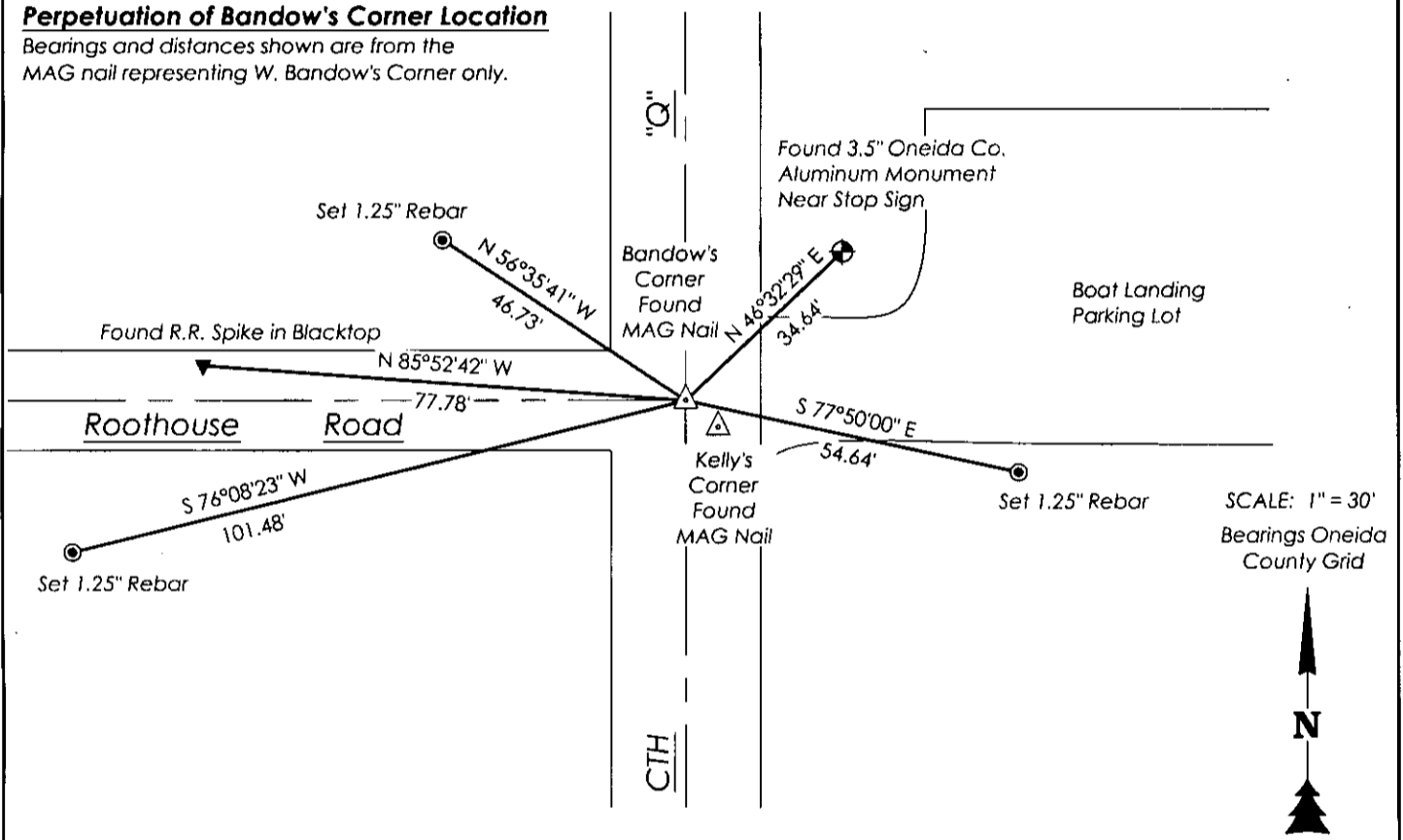
6	5	4	3	2	1
7	8	9	10	11	12
18	17	16	15	14	13
19	20	21	22	23	24
30	29	28	27	26	25
31	32	33	34	35	36

T35N - R10E

PLAN VIEW OF CORNER WITH TIES TO AT LEAST 4 WITNESS MONUMENTS. IF IN DISAGREEMENT WITH PREVIOUSLY ESTABLISHED CORNER, SHOW THE DISTANCES BETWEEN THE TWO CORNERS AND ALSO INDICATE THE TIES TO THE DISPUTED.

Perpetuation of Bandow's Corner Location

Bearings and distances shown are from the MAG nail representing W. Bandow's Corner only.

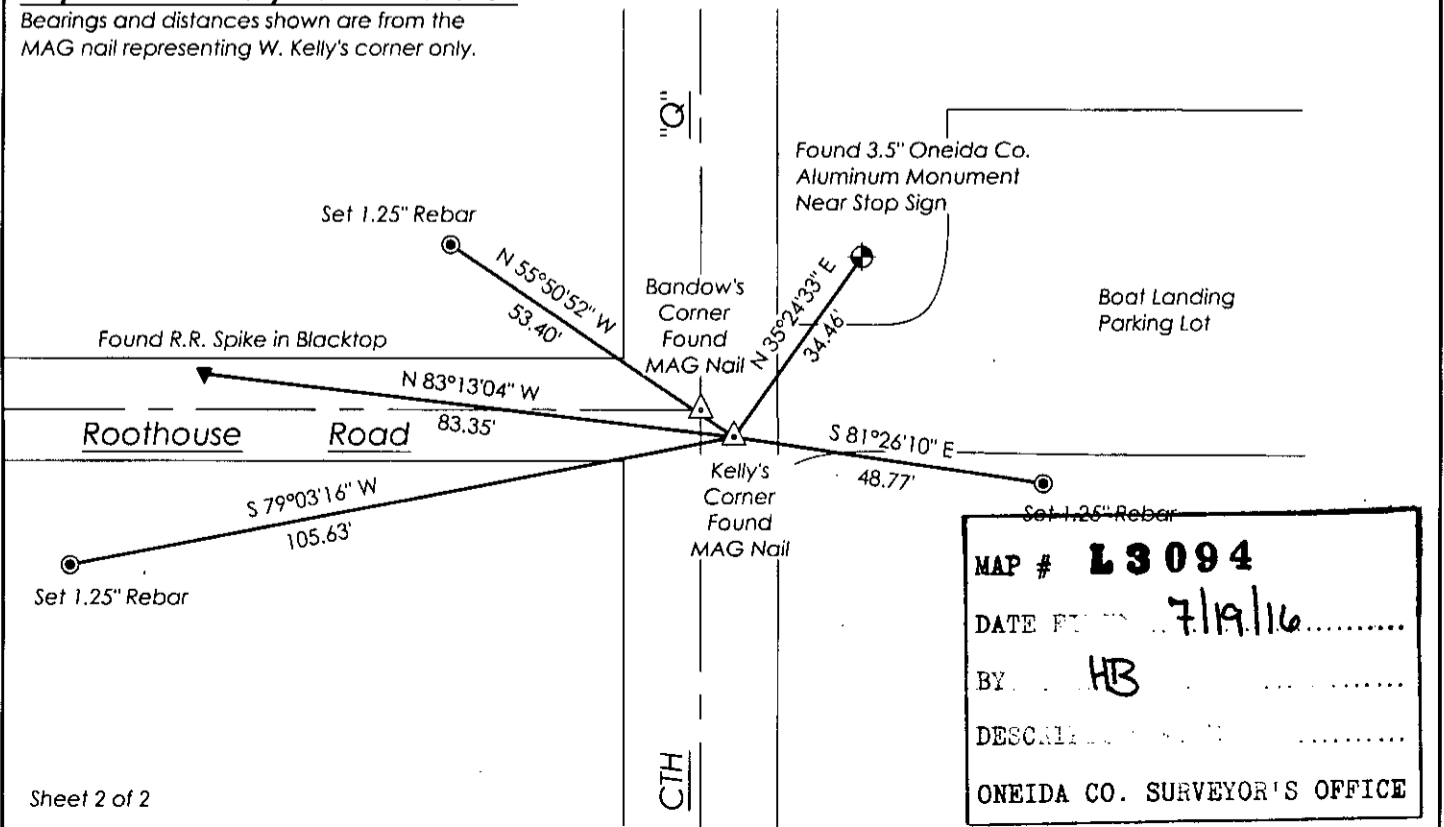


SCALE: 1" = 30'
Bearings Oneida County Grid



Perpetuation of Kelly's Corner Location

Bearings and distances shown are from the MAG nail representing W. Kelly's corner only.



MAP # **L 3 0 9 4**
 DATE FILED 7/19/16
 BY HB
 DESCRIPTION
 ONEIDA CO. SURVEYOR'S OFFICE