

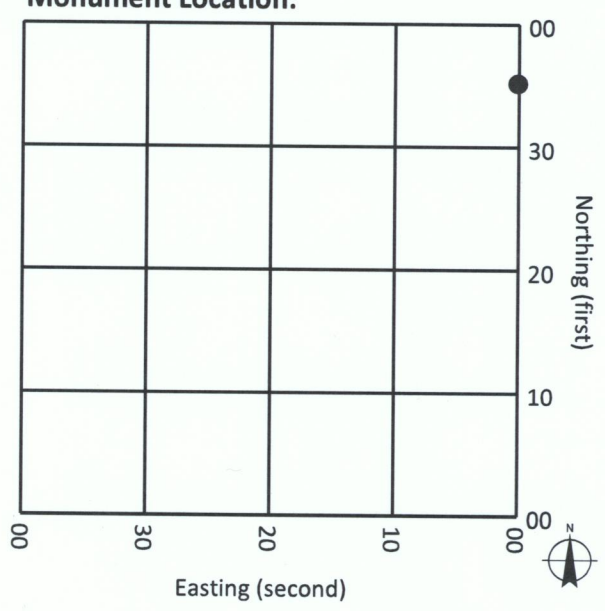
VILAS COUNTY GPS OBSERVATION RECORD

Corner ID: 3910013600 Sec 01 , T 39 N, R 10 E

Observation 1

Date: 5/25/2017 Time: 10:20
Length of Observation (Seconds): 30
Type (RTK, Static, Etc.): RTK
Base Station: CORS NETWORK

Monument Location:

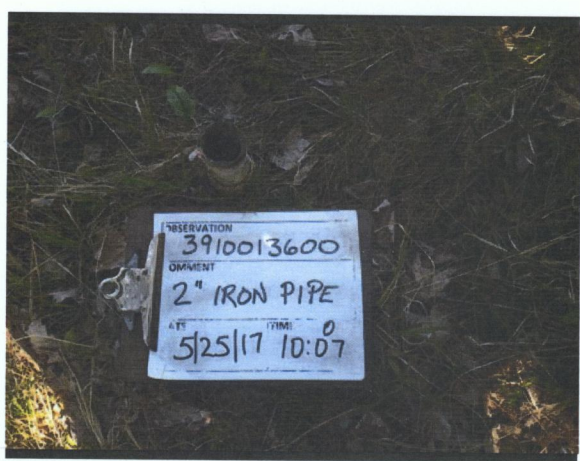


Observation 2

Date: 11/15/2018 Time: 8:44
Length of Observation (Seconds): 180
Type (RTK, Static, Etc.): RTK
Base Station: CORS NETWORK

Site Notes (FD/Not FD, Type, Condition, Obstructions, GPS Observable, Equipment, Etc.):

FOUND A 2" IRON PIPE USED AS THE MEANDER CORNER BY LOCAL SURVEYORS.
SEE LOCAL SURVEYS FOR MORE INFORMATION.



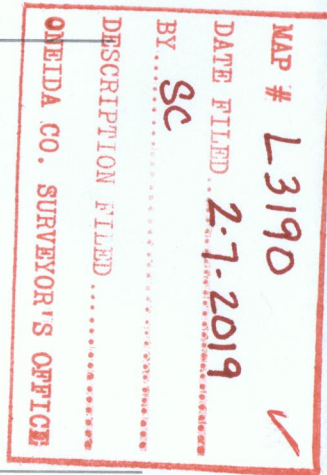
Monument Photo



Site Photo

Vilas County Coordinate System

Datum: NAD83 (WISCRS)
North (USFT): 99517.58
East (USFT): 520228.02
Owner (Vilas Co., USGS, NGS, WIDOT, Etc.):
Vilas Co



Surveyor: Tony Jones

Date: 11/16/2018

I certify that I have surveyed the above location and that the information contained hereon is correct to the best of my knowledge and belief. The intent of this form is to add supplemental information to the chain of record for the above point. Please refer to the USPLSS monument record for primary information.

DISCLAIMER: This observation record and the corresponding coordinates are intended to be used for parcel mapping purposes only and do not represent an accurate land survey or boundary survey. The coordinate data was obtained using RTK GPS and the Wisconsin Continuously Operating Reference Stations. Vilas County in no way warrants the accuracy of this record or coordinate data and is not responsible for any use of this data in the location of property boundaries, property corners or public land survey system corners.