

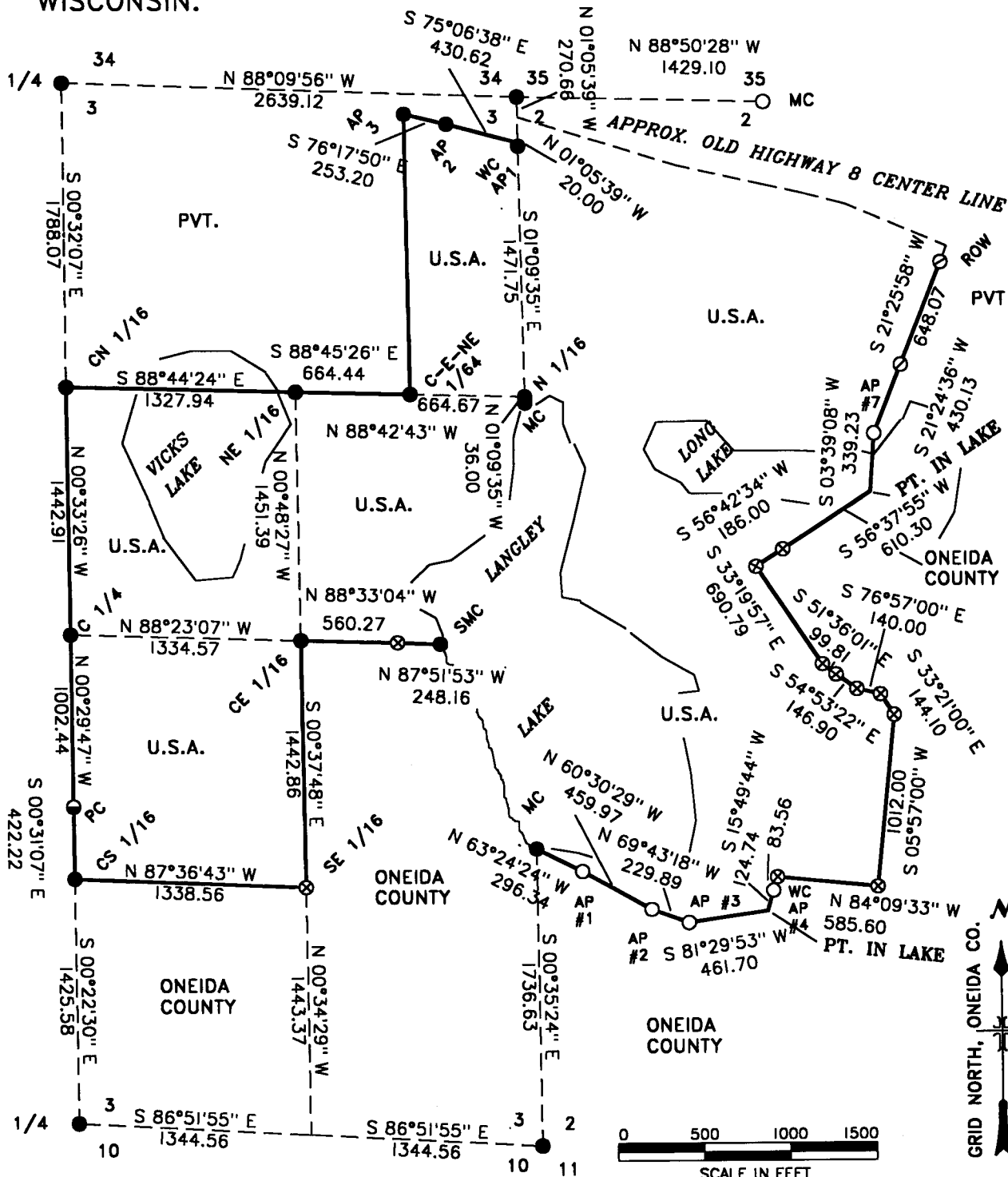


Stock No. 26273

MAP # **L 3223** ✓
 DATE **12-31-19**
 COUNTY **SC**
 SHEET **1 of 5**
 ONEIDA CO. SURVEYOR'S OFFICE

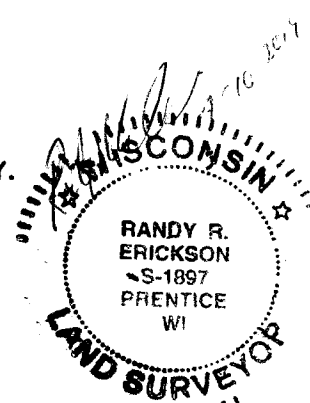
MAP OF SURVEY

U.S. GOVERNMENT LANDS BEING PARTS OF GOV, LOTS 2, 3, 7, AND GOV. LOTS 13, 14 AND 15, SECTION 2; THE NW 1/4 SE 1/4, THE SW 1/4 NE 1/4, GOV. LOT 1, AND PART OF THE E 1/2 NE 1/4 NE 1/4, SEC.3, ALL IN T 36 N, R 8 E, ONEIDA CO. WISCONSIN.



LEGEND

- MONUMENTS PEPEUTATED BY RLS #185 VIC HEDMAN IN 1962.
- MONUMENTS SET BY U.S. GENERAL OFFICE IN 1932.
- ⊙ MONUMENTS BY RLS #1182 IN 2004.
- ⊗ RECOVERED 3/4" REBAR, AS SHOWN ON MEAD AND HUNT SURVEY.
- RECOVERED PIPE BY BOETCHER-HOPPE SURVEY.



L 3223 ✓

12-31-19

SC

2 of 5

**SURVEY NOTES SECTIONS 2 AND 3
TOWNSHIP 36 NORTH, RANGE 08 EAST, ONEIDA COUNTY, WISCONSIN**

THIS SURVEY WAS MADE BY THE U.S.D.A FOREST SERVICE AT THE REQUEST OF THE DIRECTOR OF THE NORTHERN RESEARCH STATION OF THE FOREST SERVICE IN RHINELANDER WISCONSIN. THE PURPOSE OF THIS SURVEY WAS TO RECOVER, RESTORE, ESTABLISH, MARK AND PERPETUATE THE CORNERS AND BOUNDARIES OF NATIONAL FOREST LANDS ON THE PERIMETER AND WITHIN SECTIONS 2 AND 3, TOWNSHIP 36 NORTH, RANGE 06 EAST, ONEIDA COUNTY, WISCONSIN.

ORIGINAL GOVERNMENT SURVEY OF TOWN LINE WAS MADE IN 1860 BY ALFRED MILARD. SURVEY OF SECTION LINES WAS MADE IN 1863 BY WILLIAM DAUGHERTY.

A DEPENDENT RESURVEY OF SECTION 2, WAS MADE BY THE U.S. GENERAL OFFICE, HAL CRAIG, DEPUTY SURVEYOR IN 1932.

U.S. FOREST SERVICE SURVEYOR, VICTOR HEDMAN, RLS #185, RETRACED AND SUBDIVED SECTION 3 IN 1962. U.S. FOREST SURVEYOR, JEAN RESVICK ASSISTED, NOT LICENSED AT THE TIME. I FOUND THE MEASUREMENTS BETWEEN MONUMENTS TO SOMEWHAT DIFFERENT THAN RECORDED, BUT FELT THEY COMPLIED WITH THE ACCEPTABLE ACCURACIES OF 1962, AS WELL AS BEING IN PLACE FOR OVER 50 YEARS. THIS SURVEY WAS USED AS THE BASIS FOR SECTION 3 SURVEY.

ROBERT BANDOW, RLS #104, SURVEYED PARCELS ACQUIRED IN SECTION 2 FOR THE FOREST SERVICE IN 1960. IN 2004 WILLIAM BANDOW, RLS #1182 SURVEYED THE EAST SIDE OF FOREST SERVICE OWNERSHIP IN SECTION 2.

A 1991 SURVEY OF THE RHINELANDER AIRPORT BY BOETCHER AND HOPPE RECORVERED MANY POINTS COMMON TO THE AIRPORT AND NATIONAL FOREST RESEARCH STATION. AN UNRECORDED SURVEY BY MEAD AND HUNT IN 2015 RECOVERED OR RESTORED ALL THE CORNERS COMMON TO THE AIRPORT AND RESEARCH STATION.

THIS SURVEY WAS MADE USING VRS GPS FOR BOTH THE CONTROL AND MARKING OF THE BOUNDARY LINES. GPS SURVEY STANDARDS WERE ADHERED TO IN THE PROCESS OF THE SURVEY. BEARINGS AND DISTANCES ARE GRID, BASED ON ONEIDA COUNTY COORDINATES, NAD 83, 2011.

FOUND AIRPORT FENCE TO BE ENCROACHING ON NATIONAL FOREST LANDS IN SEVERAL PLACES. INFORMED RESEARCH CENTER DIRECTOR OF THESE ENCROACHMENTS.

SURVEY WAS MADE IN JUNE AND JULY OF 2019 .

SURVEY CREW: RANDY ERICKSON, LAND SURVEYOR; GREG MAYER, SURVEYING TECHNICIAN;

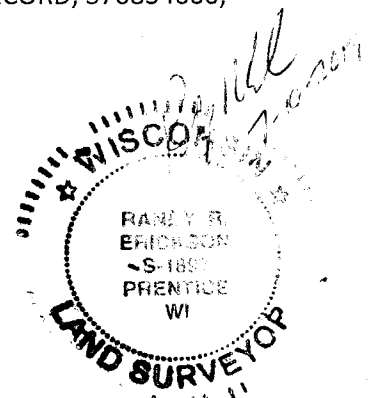
CORNERS RECOVERED

1. NORTH 1/4 CORNER SECTION 3, T 36 N, R 08 E.

RECOVERED MONUMENT AS SHOWN ON U.S. PUBLIC LAND SURVEY MONUMENT RECORD, Z-15, 3708340020, ONEIDA COUNTY SURVEYOR RECORDS, FILED IN 1989 BY RLS #1182.

2. NORTHEAST CORNER SECTION 23, T 36 N, R 08 E.

RECOVERED MONUMENT AS SHOWN ON U.S. PUBLIC LAND SURVEY MONUMENT RECORD, 370834000, ONEIDA COUNTY SURVEYOR RECORDS, FILED IN 2018 BY RLS #1284.





Stock No. 26273

MAP #	L 3223	✓
DATE	12-31-19	
BY	SC	
DEED #	305	
ONEIDA CO. SURVEYOR'S OFFICE		

3. MEANDER CORNER SECTION 2, T 36 N, R 8 E, AND SEC. 35, T 36 N, R 8 E, WEST SIDE OF LAKE.

RECOVERED MONUMENT AS SHOWN ON U.S. PUBLIC LAND SURVEY MONUMENT RECORD, 3708350029, ONEIDA COUNTY SURVEYOR RECORDS, FILED IN 2018 BY RLS #1284.

4. SOUTH QUARTER CORNER SECTION 3, T 36 N, R 08 E.

RECOVERED MONUMENT AS SHOWN ON CERTIFIED SURVEY MAP, U.S. GOVERNMENT LANDS, PAGE 3 OF 6, FILED JANUARY 12, 1976, WITH ONIEDA COUNTY REGISTER OF DEEDS. SURVEY MADE IN 1962 BY RLS #185.

5. CENTER 1/4 CORNER SECTION 3, T 36 N, R 08 E.

RECOVERED MONUMENT AS SHOWN ON CERTIFIED SURVEY MAP, U.S. GOVERNMENT LANDS, PAGE 3 OF 6, FILED JANUARY 12, 1976, WITH ONIEDA COUNTY REGISTER OF DEEDS. SURVEY MADE IN 1962 BY RLS #185.

6. SOUTHEAST CORNER SECTION 3, T 36 N, R 08 E.

RECOVERED MONUMENT AS SHOWN ON U.S. PUBLIC LAND SURVEY MONUMENT RECORD, 3608030000, ONEIDA COUNTY SURVEYOR RECORDS, FILED IN 2006 BY RLS #841.

7. MEANDER CORNER SECTIONS 2 AND 3, T 36 N, R 08 E, SOUTH SIDE OF LAKE.

RECOVERED MONUMENT AS SHOWN ON CERTIFIED SURVEY MAP, U.S. GOVERNMENT LANDS, PAGE 1 OF 6, FILED JANUARY 12, 1976, WITH ONIEDA COUNTY REGISTER OF DEEDS. SURVEY MADE IN 1962 BY RLS #185.

8. MEANDER CORNER SECTIONS 2 AND 3, T 36 N, R 08 E, NORTH SIDE OF LAKE

RECOVERED MONUMENT AS SHOWN ON CERTIFIED SURVEY MAP, U.S. GOVERNMENT LANDS, PAGE 1 OF 6, FILED JANUARY 12, 1976, WITH ONIEDA COUNTY REGISTER OF DEEDS. SURVEY MADE IN 1962 BY RLS #185.

9. CENTER NORTH 1/16 CORNER OF SECTION 3, T 36 N, R 08 E.

RECOVERED MONUMENT AS SHOWN ON CERTIFIED SURVEY MAP, U.S. GOVERNMENT LANDS, PAGE 4 OF 6, FILED JANUARY 12, 1976, WITH ONIEDA COUNTY REGISTER OF DEEDS. SURVEY MADE IN 1962 BY RLS #185.

10. CENTER SOUTH 1/16 CORNER OF SECTION 3, T 36 N, R 08 E.

RECOVERED MONUMENT AS SHOWN ON CERTIFIED SURVEY MAP, U.S. GOVERNMENT LANDS, PAGE 4 OF 6, FILED JANUARY 12, 1976, WITH ONIEDA COUNTY REGISTER OF DEEDS. SURVEY MADE IN 1962 BY RLS #185. BEARING TREES DESTROYED BY AIRPORT.

11. NORTHEAST 1/16 CORNER OF SECTION 3, T 36 N, R 08 E.

RECOVERED MONUMENT AS SHOWN ON CERTIFIED SURVEY MAP, U.S. GOVERNMENT LANDS, PAGE 4 OF 6, FILED JANUARY 12, 1976, WITH ONIEDA COUNTY REGISTER OF DEEDS. SURVEY MADE IN 1962 BY RLS #185.

12. CENTER EAST 1/16 CORNER OF SECTION 3, T 36 N, R 08 E.

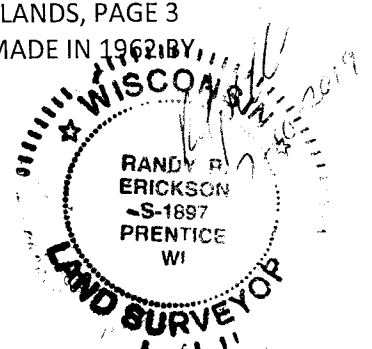
RECOVERED MONUMENT AS SHOWN ON CERTIFIED SURVEY MAP, U.S. GOVERNMENT LANDS, PAGE 4 OF 6, FILED JANUARY 12, 1976, WITH ONIEDA COUNTY REGISTER OF DEEDS. SURVEY MADE IN 1962 BY RLS #185.

13. SOUTHEAST 1/16 CORNER OF SECTION 3, T 36 N, R 08 E.

RECOVERED MONUMENT AS SHOWN ON 2015 MAP BY MEAD AND HUNT. 1962 MONUMENT AND ACCESSORIES HAVE BEEN DESTROYED.

14. NORTH 1/16 CORNER OF SECTIONS 2 AND 3, T 36N, R 08 E.

RECOVERED MONUMENT AS SHOWN ON CERTIFIED SURVEY MAP, U.S. GOVERNMENT LANDS, PAGE 3 OF 6, FILED JANUARY 12, 1976, WITH ONIEDA COUNTY REGISTER OF DEEDS. SURVEY MADE IN 1962 BY RLS #185.





Stock No. 26273

15. CENTER-EAST- NORTHEAST 1/64 CORNER OF SECTION 3, T 36 N, R 08 E.

RECOVERED MONUMENT AS SHOWN ON CERTIFIED SURVEY MAP, U.S. GOVERNMENT LANDS, PAGE 5 OF 6, FILED JANUARY 12, 1976, WITH ONIEDA COUNTY REGISTER OF DEEDS. SURVEY MADE IN 1962 BY RLS #185.

16. SPECIAL MEANDER CORNER OF SECTION 3, T 36 N, R 08 E.

RECOVERED MONUMENT AS SHOWN ON CERTIFIED SURVEY MAP, U.S. GOVERNMENT LANDS, PAGE 5 OF 6, FILED JANUARY 12, 1976, WITH ONIEDA COUNTY REGISTER OF DEEDS. SURVEY MADE IN 1962 BY RLS #185.

17. WITNESS CORNER TO ANGLE POINT #1 SECTION 3, T 36 N, R 08 E, HIGHWAY ROW.

RECOVERED WITNESS MONUMENT 20 FEET SOUTH OF ACTUAL CORNER AS SHOWN ON CERTIFIED SURVEY MAP, U.S. GOVERNMENT LANDS, PAGE 5 OF 6, FILED JANUARY 12, 1976, WITH ONIEDA COUNTY REGISTER OF DEEDS. SURVEY MADE IN 1962 BY RLS #185.

18. ANGLE POINT #2 SECTION 3, T 36 N, R 08 E HIGHWAY ROW.

RECOVERED MONUMENT AS SHOWN ON CERTIFIED SURVEY MAP, U.S. GOVERNMENT LANDS, PAGE 5 OF 6, FILED JANUARY 12, 1976, WITH ONIEDA COUNTY REGISTER OF DEEDS. SURVEY MADE IN 1962 BY RLS #185.

19. ANGLE POINT #3 SECTION 3, T 36 N, R 08 E HIGHWAY ROW.

RECOVERED MONUMENT AS SHOWN ON CERTIFIED SURVEY MAP, U.S. GOVERNMENT LANDS, PAGE 5 OF 6, FILED JANUARY 12, 1976, WITH ONIEDA COUNTY REGISTER OF DEEDS. SURVEY MADE IN 1962 BY RLS #185.

20. ANGLE POINT #1 LAKE MEANDER SECTION 2, T 36 N, R 08 E .

RECOVERED MONUMENT FROM 1932 U.S. GENERAL LAND OFFICE RESURVEY. SHOWN ON MEAD AND HUNT SURVEY FROM 2015.

21. ANGLE POINT #1 LAKE MEANDER SECTION 2, T 36 N, R 08 E .

RECOVERED MONUMENT FROM 1932 U.S. GENERAL LAND OFFICE RESURVEY. SHOWN ON MEAD AND HUNT SURVEY FROM 2015.

22. ANGLE POINT #2 LAKE MEANDER SECTION 2, T 36 N, R 08 E .

RECOVERED MONUMENT FROM 1932 U.S. GENERAL LAND OFFICE RESURVEY. SHOWN ON MEAD AND HUNT SURVEY FROM 2015.

23. ANGLE POINT #3 LAKE MEANDER SECTION 2, T 36 N, R 08 E .

RECOVERED MONUMENT FROM 1932 U.S. GENERAL LAND OFFICE RESURVEY. SHOWN ON MEAD AND HUNT SURVEY FROM 2015.

24. WITNESS CORNER ANGLE POINT #4 LAKE MEANDER SECTION 2, T 36 N, R 08 E .

RECOVERED MONUMENT FROM 1932 U.S. GENERAL LAND OFFICE RESURVEY. SHOWN ON MEAD AND HUNT SURVEY FROM 2015.

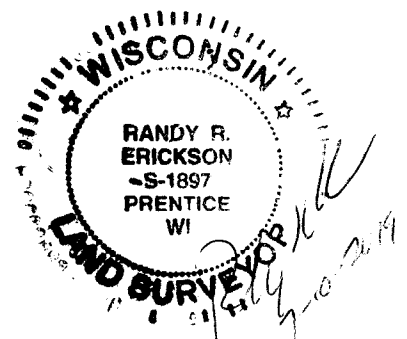
25. ANGLE POINT #7 LAKE MEANDER SECTION 2, T 36 N, R 08 E .

RECOVERED MONUMENT FROM 1932 U.S. GENERAL LAND OFFICE RESURVEY. SHOWN ON MEAD AND HUNT SURVEY FROM 2015.

ALSO RECOVERED NUMEROUS PROPERTY CORNERS SET BY PRIVATE SURVEYORS IN PAST YEARS.

PAGE 4 OF 5

MAP #	L 3223	✓
DATE	12-31-19	
BY	SC	
DEPT.	4 of 5	
ONEIDA CO. SURVEYOR'S OFFICE		





Stock No. 26273
SURVEYOR'S AFFIDAVIT

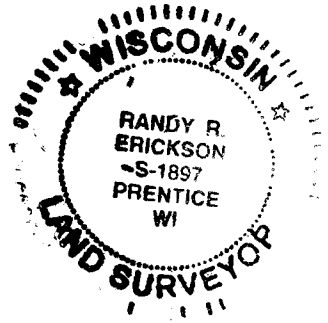
STATE OF WISCONSIN)
COUNTY OF ONEIDA) SS

I RANDY R. ERICKSON, LAND SURVEYOR FOR THE U.S.D.A. FOREST SERVICE AND A PROFESSIONAL LAND SURVEYOR IN THE STATE OF WISCONSIN DO HEREBY CERTIFY THAT I HAVE SURVEYED AND SUBDIVIDED SECTION 3, TOWNSHIP 36 NORTH, RANGE 08 EAST, 4TH P.M., ONEIDA COUNTY, WISCONSIN. AND LOCATED CORNERS OF THE NATIONAL FOREST RESEARCH STATION IN SECTION 2. DURING THIS SURVEY I HAVE COMPLIED WITH THE RULES OF THE DIVISION OF THE PUBLIC LANDS AND APPLICABLE STATE RULES. THE MAP AND ACCOMPANYING NOTES ARE A CORRECT AND ACCURATE REPRESENTATION OF THE SURVEY TO THE BEST OF MY KNOWLEDGE AND BELIEF.

RANDY R. ERICKSON
WIS. PROFESSIONAL SURVEYOR #1897

DATE: 07-10-2019

PAGE 5 OF 5



MAP #	L 3223	✓
DATE	12-31-19	
FILE	SC	
PAGES	5 of 5	
ONEIDA CO. SURVEYOR'S OFFICE		