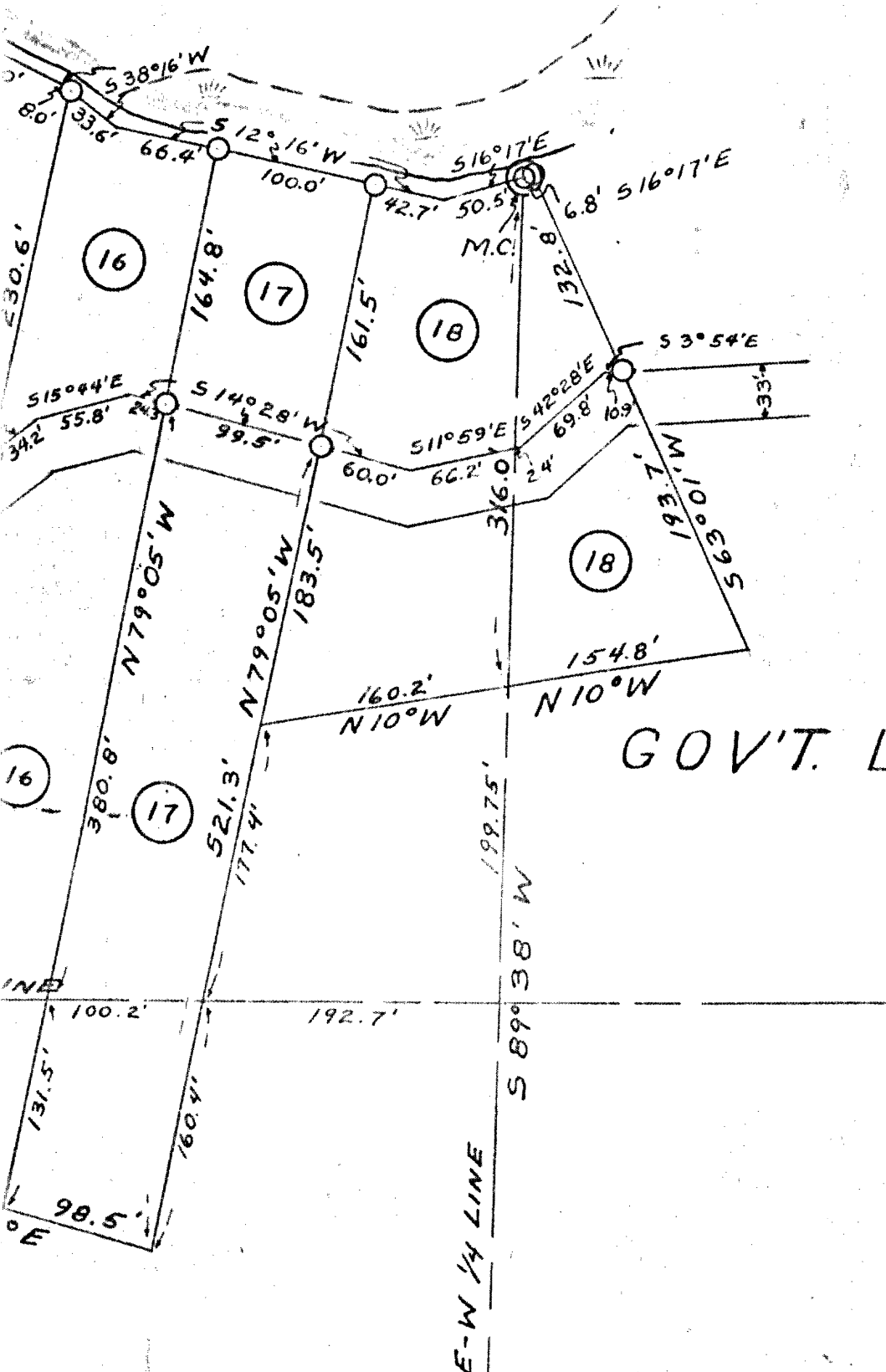
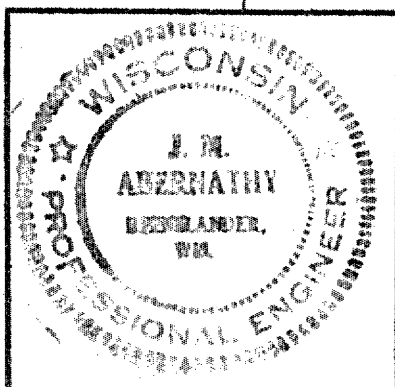


RECEIVED & FILED # **L323**  
Oneida County Surveyor's Office  
Date **FEB. 14 1988**  
By **M.J.H.**  
OCS Area # .....



GOV'T. LOT 7

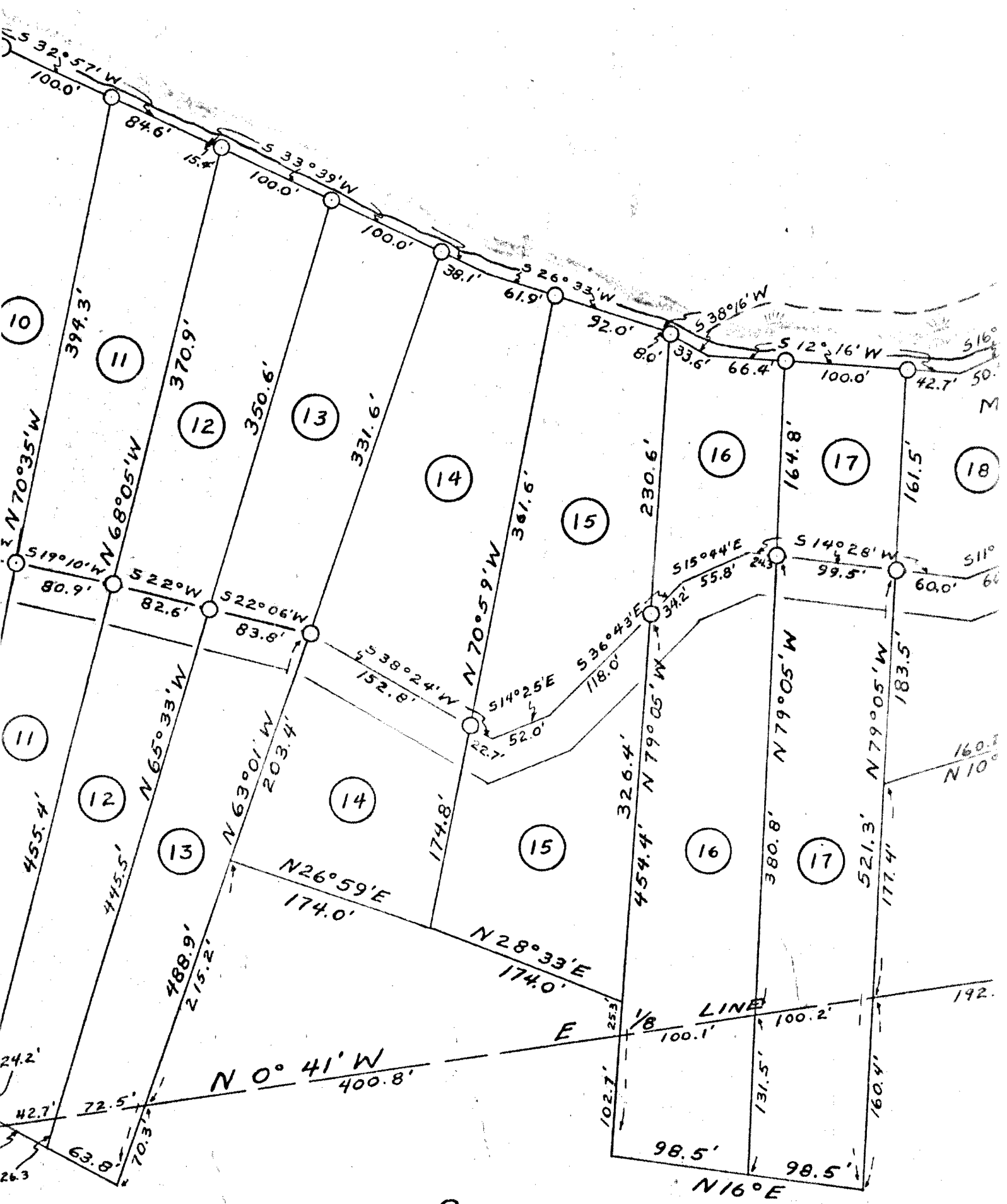


MARTIN-FERRIS-SCHAUDER  
SUBDIVISION IN  
SEC. 32, T. 39N., R. 9 E.

SCALE 1" = 100' DATE 8-17-50 DWN. BY *P.H.*

DWG. NO. <b>731-1</b>	GENISOT ENGINEERING CO. RHINELANDER, WIS.
--------------------------	--

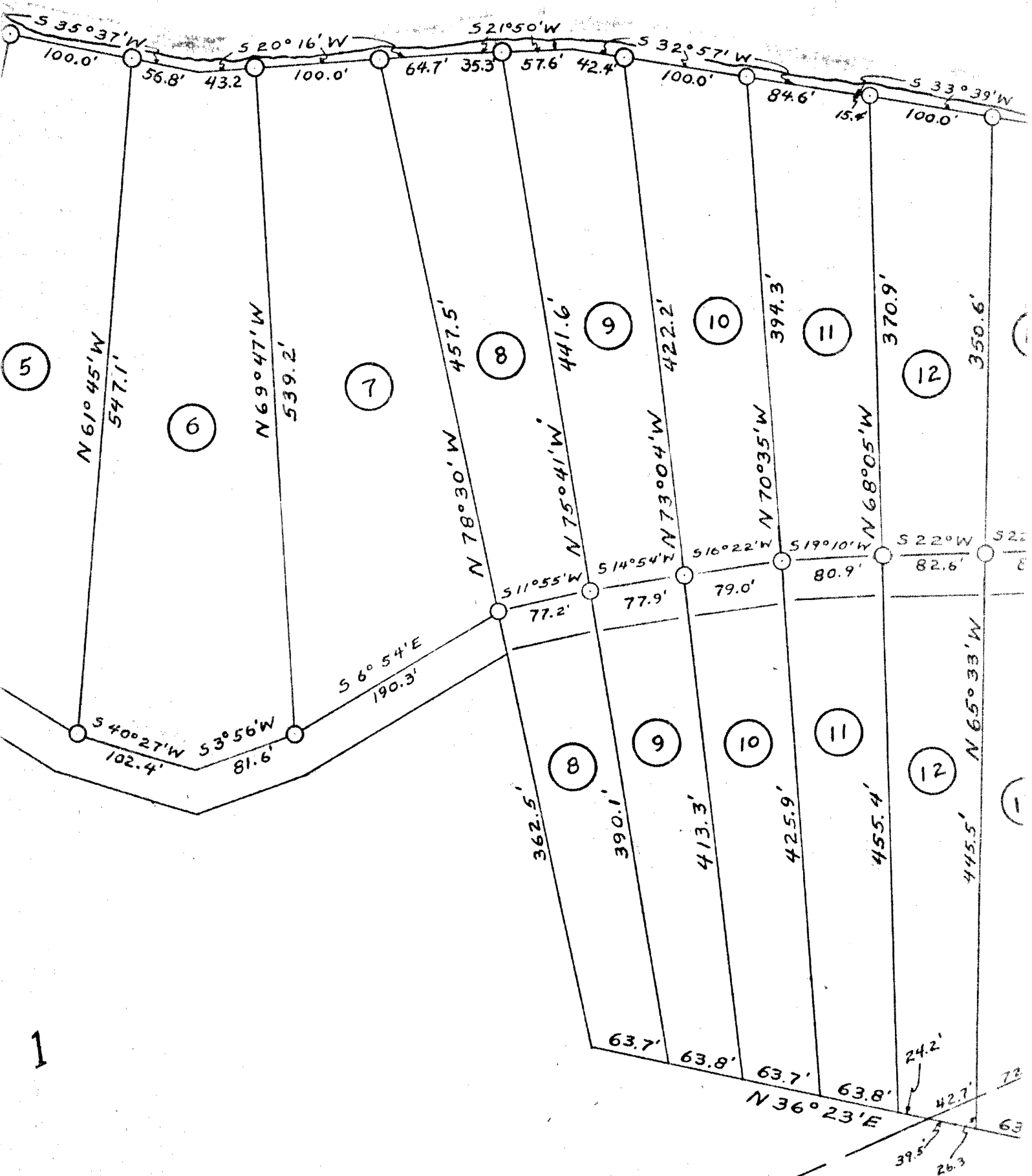
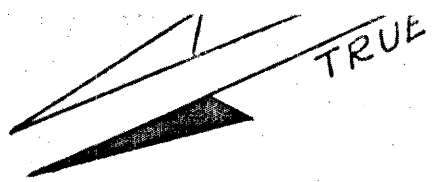
# L A K E



GOV'T. LOT 2

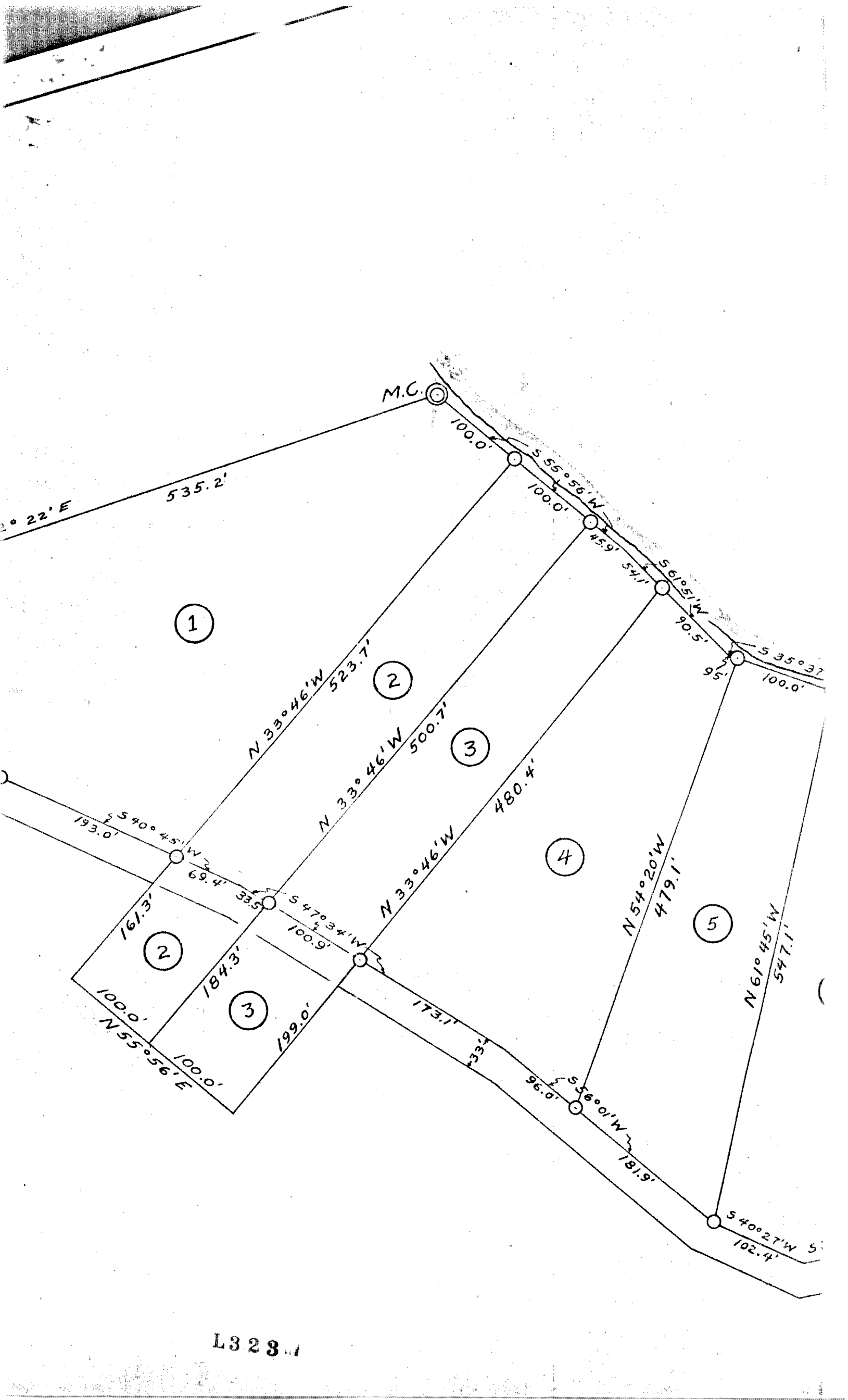
ECHO

LA

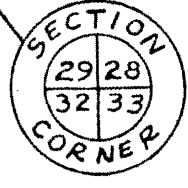


1

L323



L328M



S 89° 49' W  
23.2'



33'

S 90° 35' W  
620.7'

718.5'

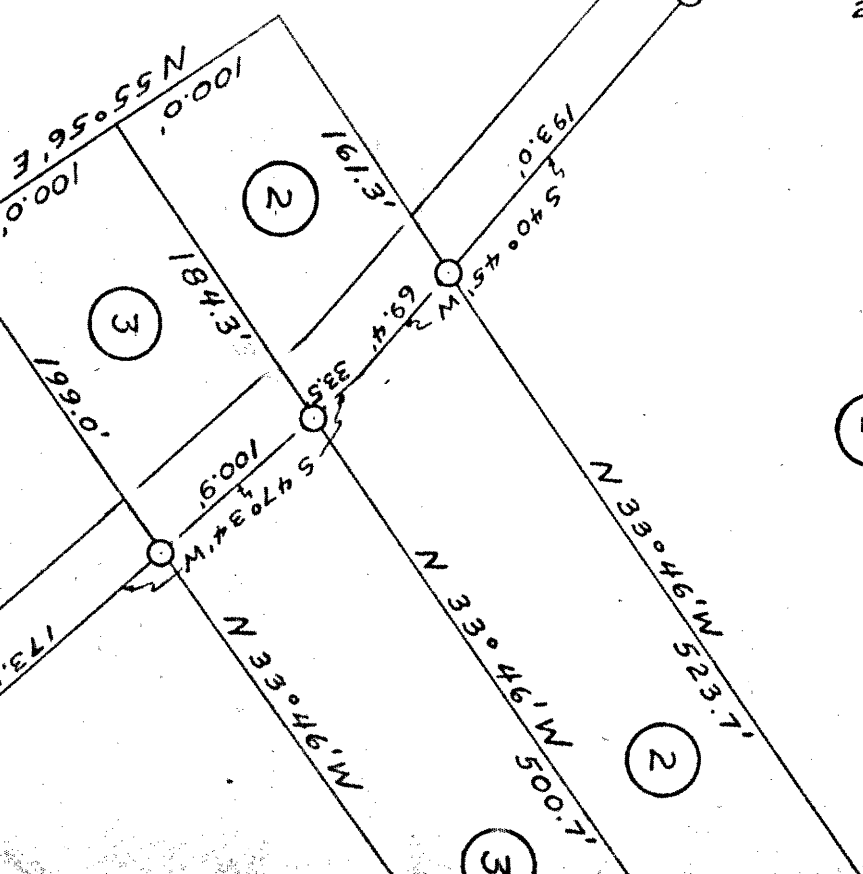
EAST SEC. LINE SEC. 32

S 31° 08' W  
134.1'

N 87° 38' E  
225.8'

S 20° 22' E

535.2'



N 55° 56' E  
100.0'

(2)

(3)

E 199.0'

N 47° 34' W  
100.9'

N 33° 46' W  
173.1'

N 33° 46' W  
523.7'

(2)

(3)

(1)

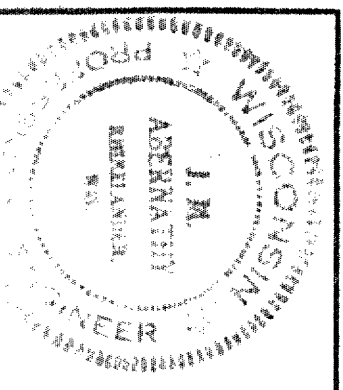
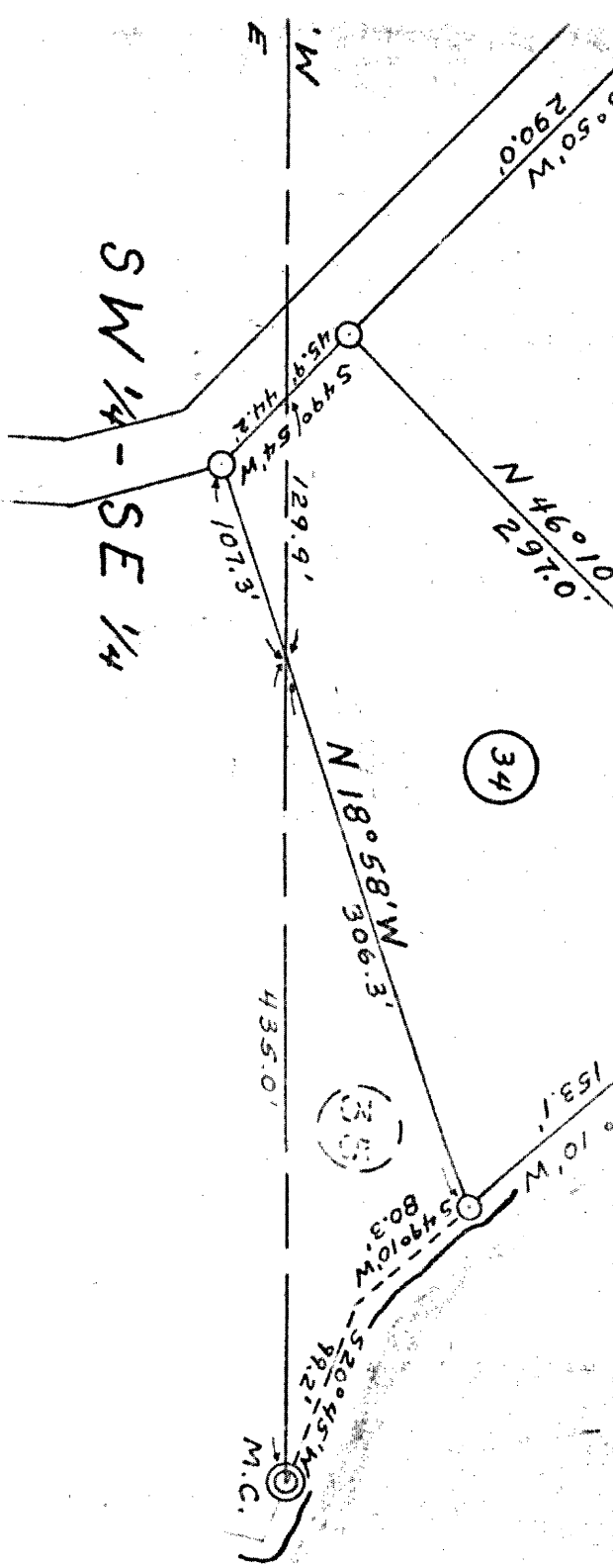
E 161.9'

S 40° 45' W  
69.4'

S 31° 08' W  
38.5'

N 33° 46' W  
523.7'

N 33° 46' W  
700.5'

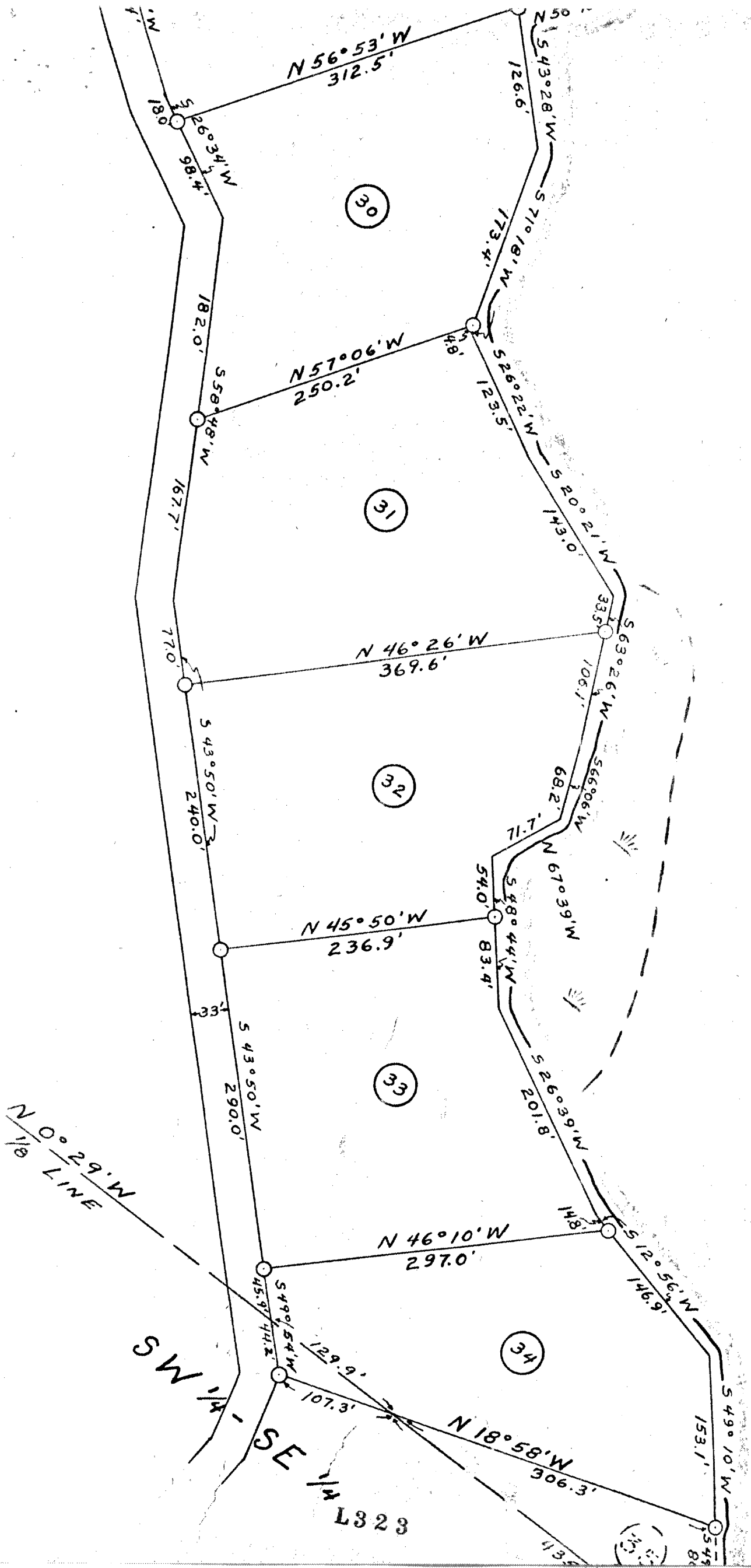


MARTIN-FERRIS - SCHAUDER  
 SUBDIVISION IN  
 SEC. 32, T. 39N, R. 9 E.

SCALE 1" = 100' DATE 8-16-50 DWN BY R.H.H.  
 DWG. NO. 731-2 GENISOT ENGINEERING CO.  
 RHEINLANDER, WIS.

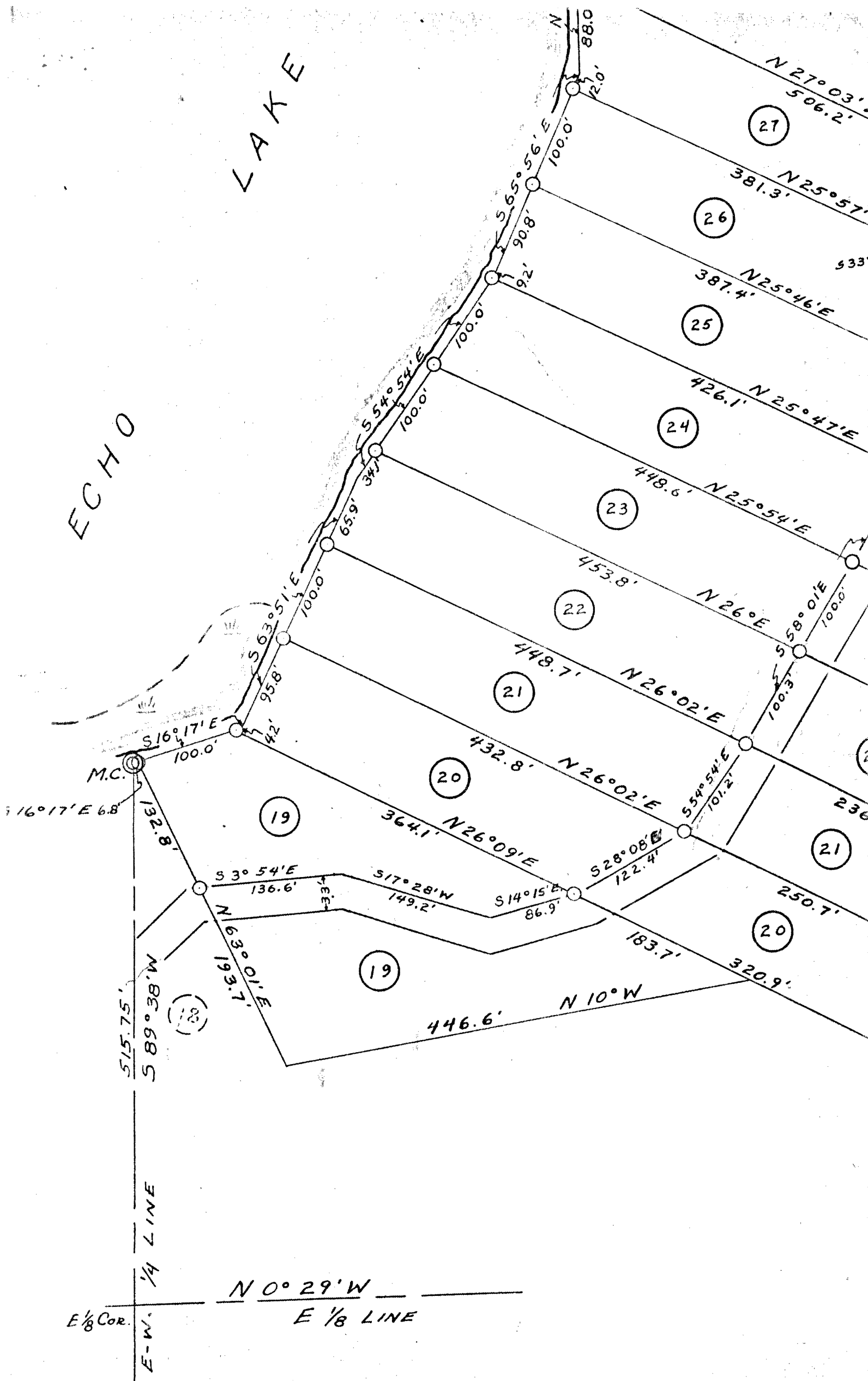
1823

THOROUGHFARE



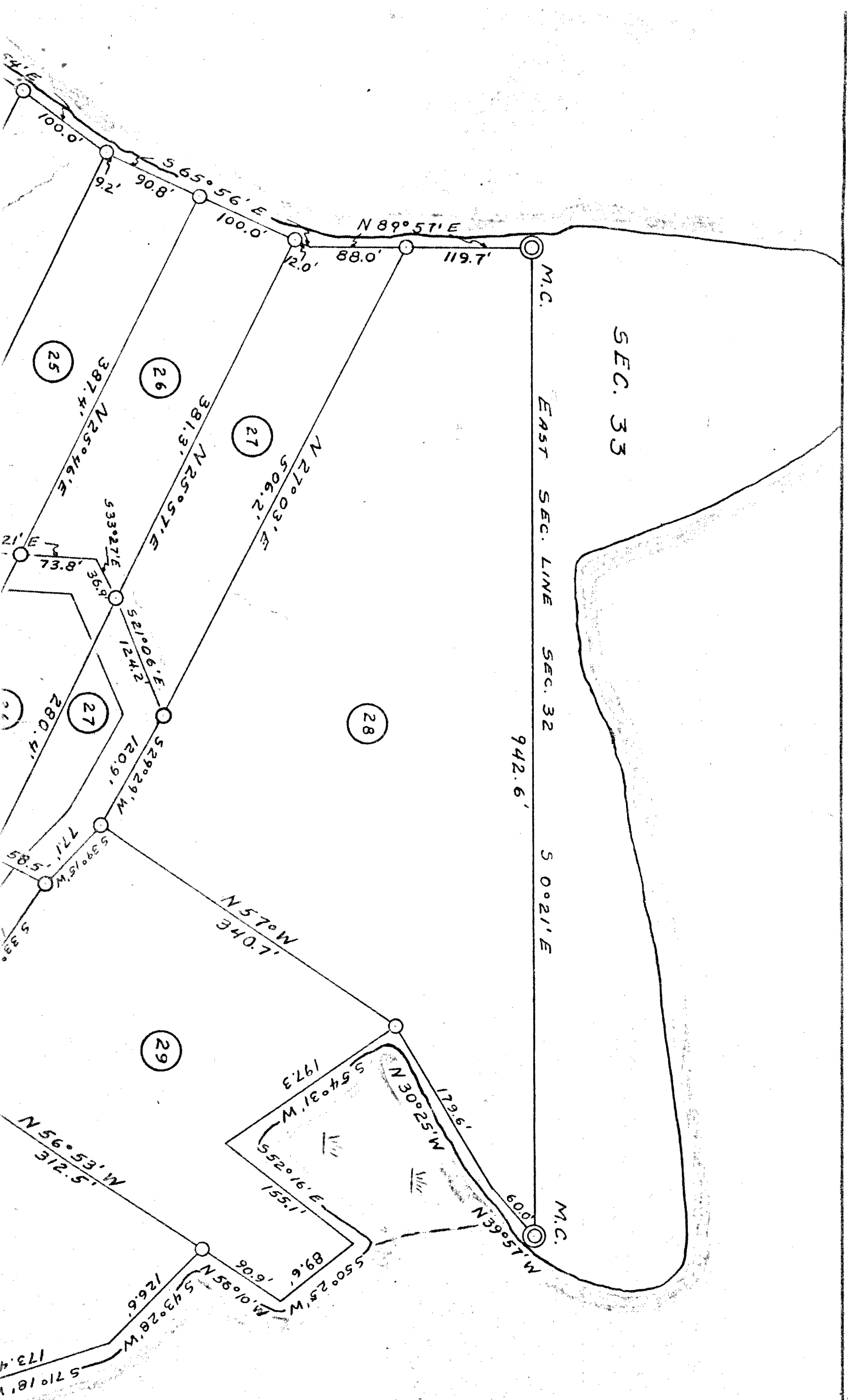
ECHO

LAKE

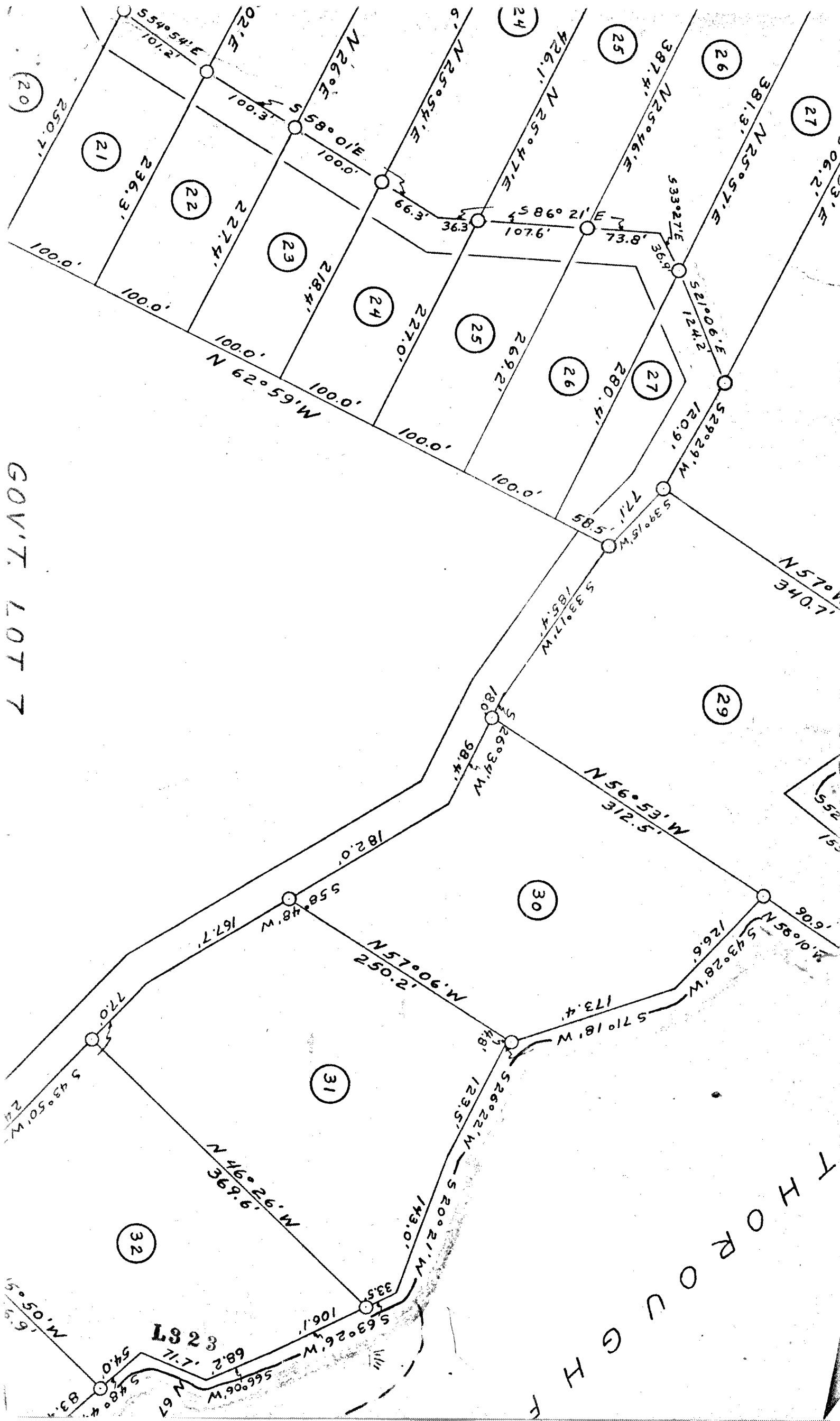


L323





L 3 2 3

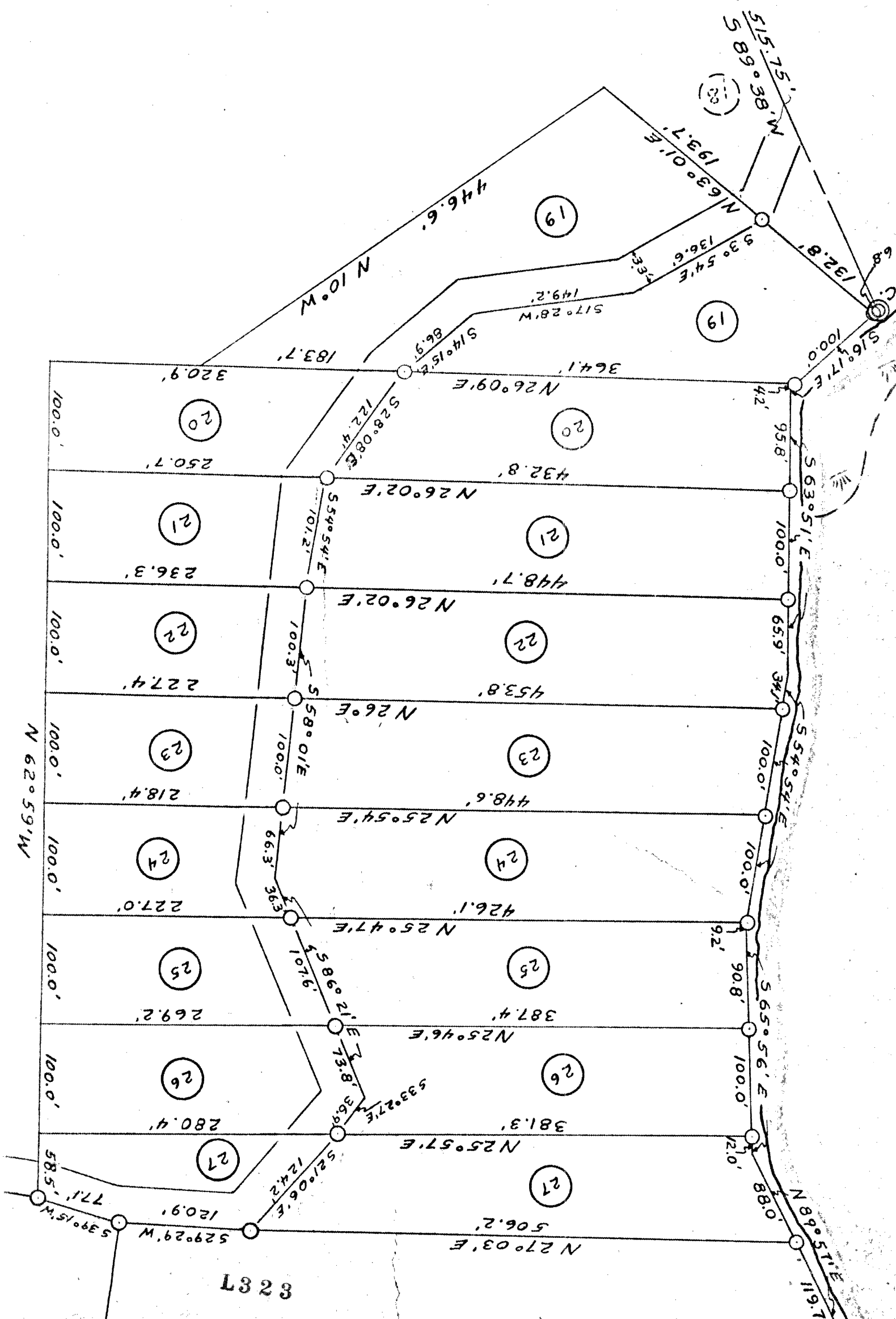


GOV'T. LOT 7

THOROUGH

1323

1/4 LINE  
N 0° 29' W  
E 1/8 LINE



8287