

L3269

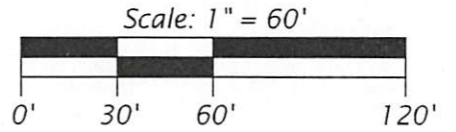
L3269

MAP # L3269 ✓
 DATE FILED 7-19-2021
 BY JAP
 DESCRIPTION FILED
 ONEIDA CO. SURVEYOR'S OFFICE

LOTS 13 thru 16, BLOCK 8
 of the recorded
 PLAT of MINOCQUA
 being part of
 GOV'T. LOT 4
 SECTION 14, T39N, R6E
 Town of Minocqua
 Oneida County, Wisconsin



James D. Rein
 Professional Land Surveyor No. S-1234
 Dated this 3rd day of February, 2021
 Field survey was completed on January 22, 2021.

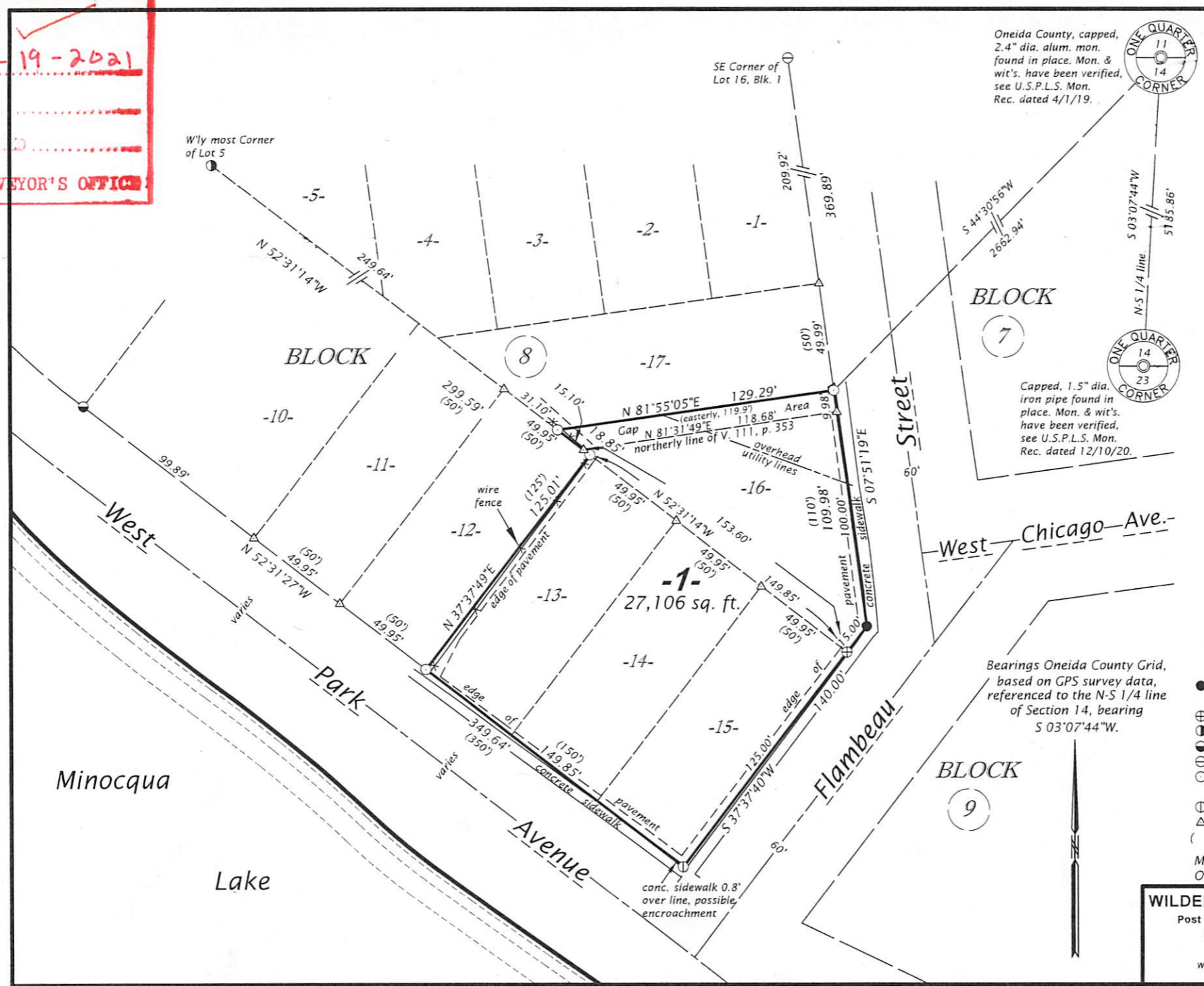


- LEGEND**
- = original iron monument, possible drill bit, found in place
 - ⊕ = 1.75" dia. iron pipe found in place
 - ⊙ = 1.25" dia. iron pipe previously found in place
 - ⦿ = 1.0" dia. iron pipe previously found in place
 - ⊖ = P.K. nail found in place
 - = iron pipe set, 1.0" dia. x 24" long, weighing 1.13 lbs. per lin. ft.
 - Ⓢ = P.K. nail set in concrete
 - △ = computed position, not monumented
 - () = previously recorded bearing and distance
- Monument sizes are outside diameter dimensions.
 Other corner monuments are as noted.

WILDERNESS SURVEYING, INC.
 Post Office Box 1111 - 8793 Earls Court
 Minocqua, Wisconsin 54548
 Tel. (715) 356-5100
 www.wildernesssurveying.com

Map No. 21 - 06exhibit
 File No. 5 - 14 - 396
 Drafted by: C. Winkler
 Sheet 1 of 1 sheets

EXHIBIT



L3269

L3269