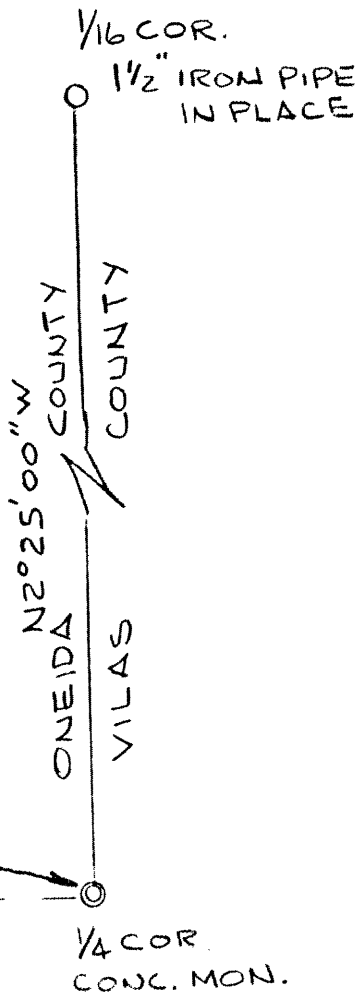


N



LEGEND

- - 1"X30" IRON PIPE
- ⊙ - CONCRETE MONUMENT
- ⊕ - SOIL BORING
- ≡ - SWAMP

ALL SLOPES LESS THAN 15%

SCALE: 1"=100'

OWNER - EMMERY MARR

SURVEY BY A.M. HESS S-666
MAY 1975



COUNTY PLAT OF

MAZE-
LAND WEST

LOCATED IN THE NE 1/4, SEC. 1, T39N, R9E
TOWN OF SUGAR CAMP
ONEIDA COUNTY

1328

1881-2-30
#24
V.P. 1991

RECEIVED & FILED # ~~1328~~
Oneida County Surveyor's Office
Date: ~~2 Nov 77~~
By: ~~D. M. W. Hunt~~
OCS Area #. 1-1-3907

RECEIVED & FILED # **L328**
Oneida County Surveyor's Office
Date: **FEB. 14 1988**
By: **M.J.H.**
OCS Area #.....

