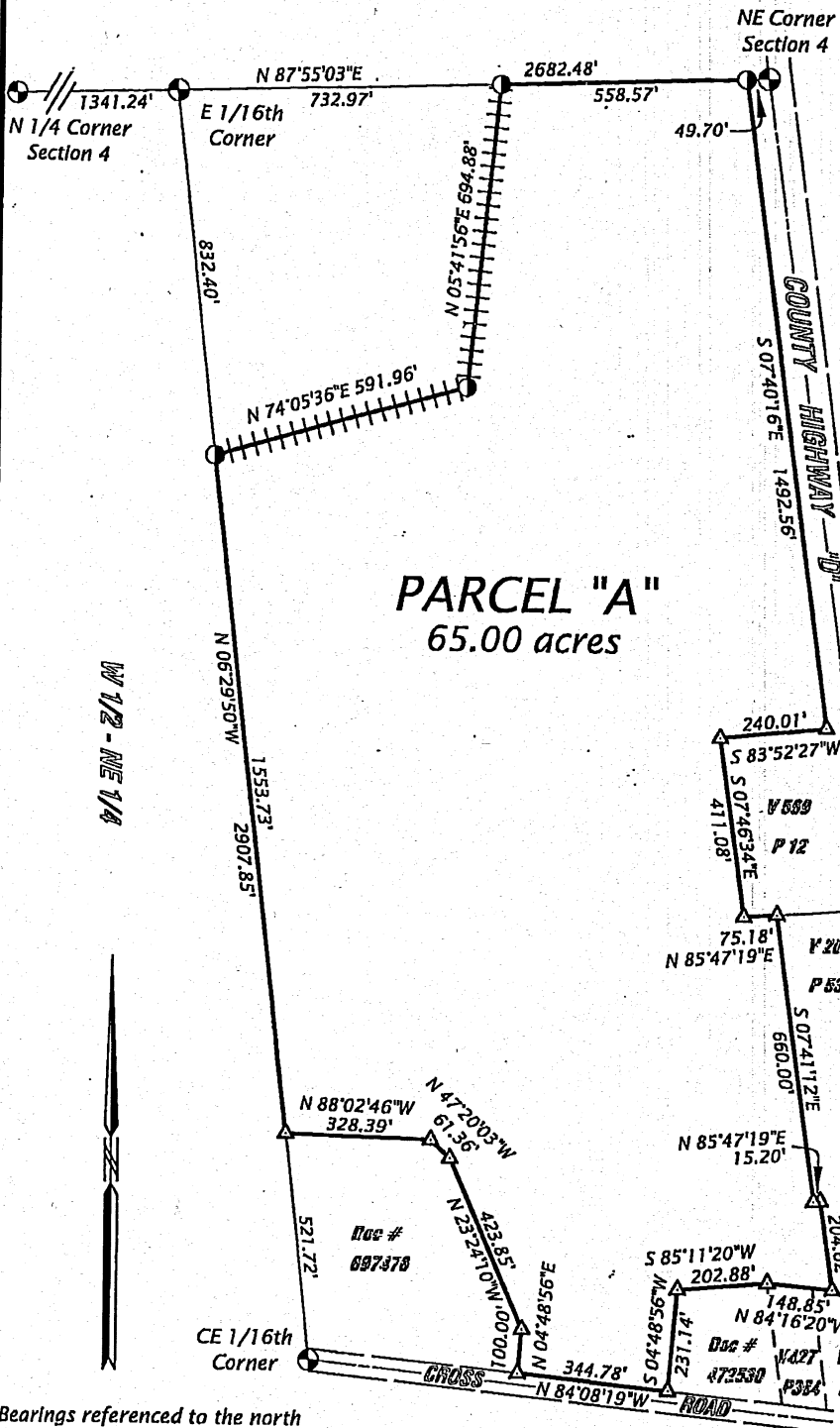


Part of
E 1/2 of the NE 1/4
SECTION 4, T38N, R9E
 Town of Sugar Camp
 Oneida County, Wisconsin

SURVEYOR'S CERTIFICATE
 I, Theodore G. Sommer, Professional Land Surveyor No. S-2964, hereby certify that by the direction of Jerry Barczak I have surveyed "Parcel A" which is a partial retracement of the previous survey filed as Map No B7159 with the Oneida County Land Information Office. Said parcel being part of the E 1/2 of the NE 1/4, Section 4, T38N, R9E, Town of Sugar Camp, Oneida County, Wisconsin.

That I have fully complied with Wisconsin Administrative Code AE-7 in surveying and mapping the same. Legal description has been provided for on a separate sheet.



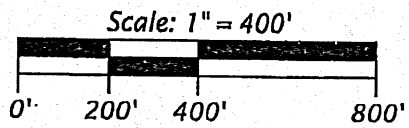
PARCEL "A"
 65.00 acres

Theodore G. Sommer-PLS-2964

| | | | | |
|---------------|---------------------|--------|-------------------|------------------------------|
| MAP # L3292 ✓ | DATE FILED 6-1-2022 | BY JAP | DESCRIPTION FILED | ONEIDA CO. SURVEYOR'S OFFICE |
|---------------|---------------------|--------|-------------------|------------------------------|

- LEGEND**
- = 0.75" diameter x 24" long rebar set
 - △ = property corner previously established
 - +++ = new line marked with flagging

Monument dimensions are outside diameter. Other corner monuments are as noted. Field survey was completed on 8/22/19



Bearings referenced to the north line of the NE 1/4, Section 4 bearing N 87°55'03"E

ON POINT LAND PLANNING, LLC
 8367 Koch's Cove, Harshaw, Wisconsin 54529
 tedthesurveyor@gmail.com
 (715) 892-0934

Map No: 19-24 Barczak Sheet 1 of 1
 File No: 1&8-4-389 Drafted by: TGS