

L3296

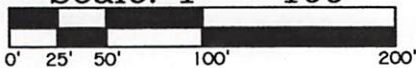
L3296

# Certified Survey Map

## No. 5222

Being a part of  
**Gov't. Lot 4 of Section 2**  
**T 36 N, R 9 E**  
 Town of Pelican, Oneida County, WI.

Scale: 1" = 100'

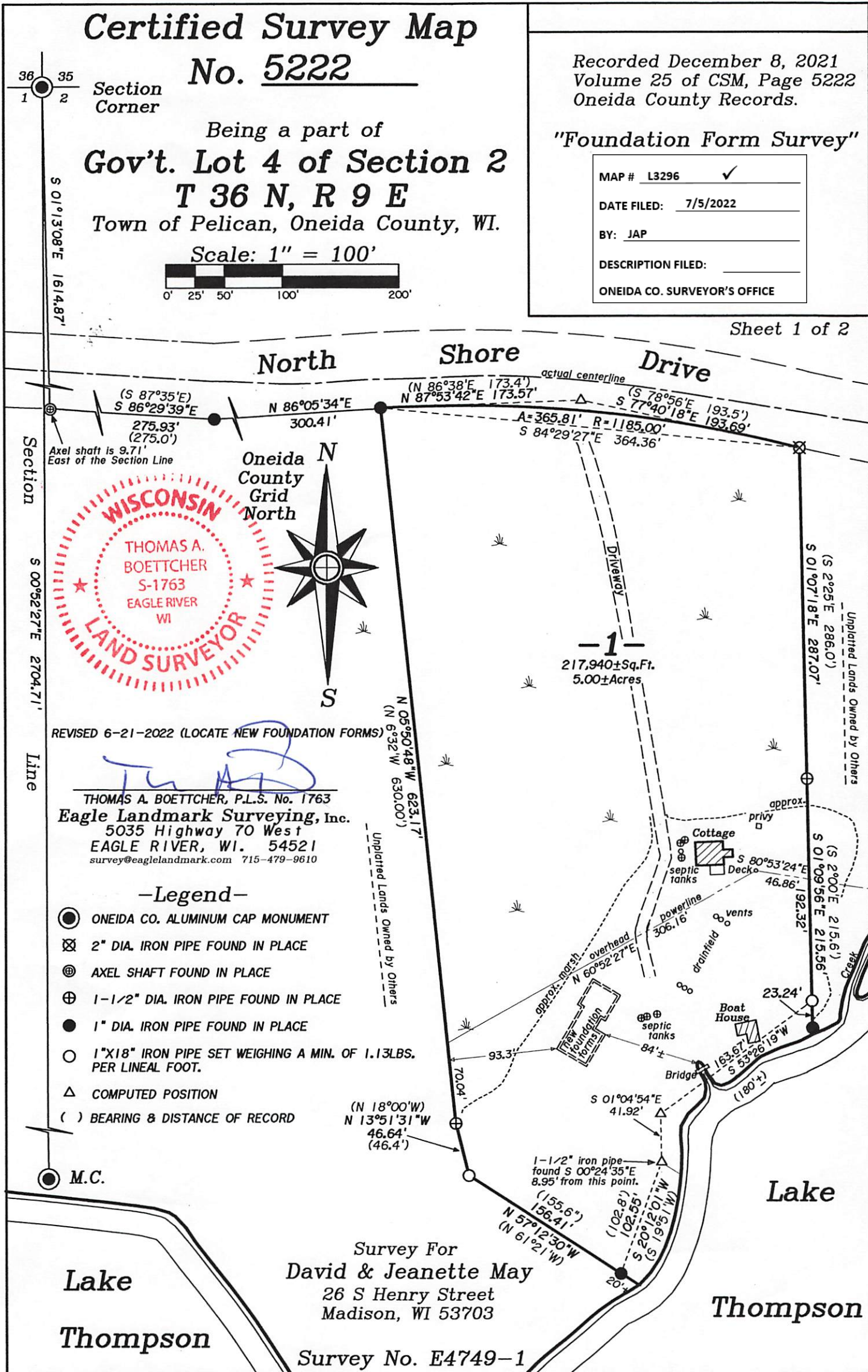


Recorded December 8, 2021  
 Volume 25 of CSM, Page 5222  
 Oneida County Records.

"Foundation Form Survey"

MAP #	L3296	✓
DATE FILED:	7/5/2022	
BY:	JAP	
DESCRIPTION FILED:		
ONEIDA CO. SURVEYOR'S OFFICE		

Sheet 1 of 2



L3296

L3296