

Legal Description: LOT 3 COURT RAY OF LIMBER LOST

Section 5<sup>1</sup>, T 36 N, R 10 E

Job Name DAVID TUTTAL Page 1

Date 1st MAY, 1986 Weather 40° FINEST COLD WINDY

Crew JAMES D. REIL - STEVEN S. TODD  
LOCATED EXISTING BOUNDARY CORNER MONUMENTS FOR  
LOT 3 MARKED LINES AND TRAPESIS THE CORNER  
MONUMENTS, LOCATED BUILDING.

*James D. Reil*  
Reg. Land Surveyor

*Note: The client has reviewed the requirements for a map as required by R.S. 5*

RECEIVED & FILED #1388

Oneida County Surveyor's Office

Date JUN 19 1988

By M.S.H.

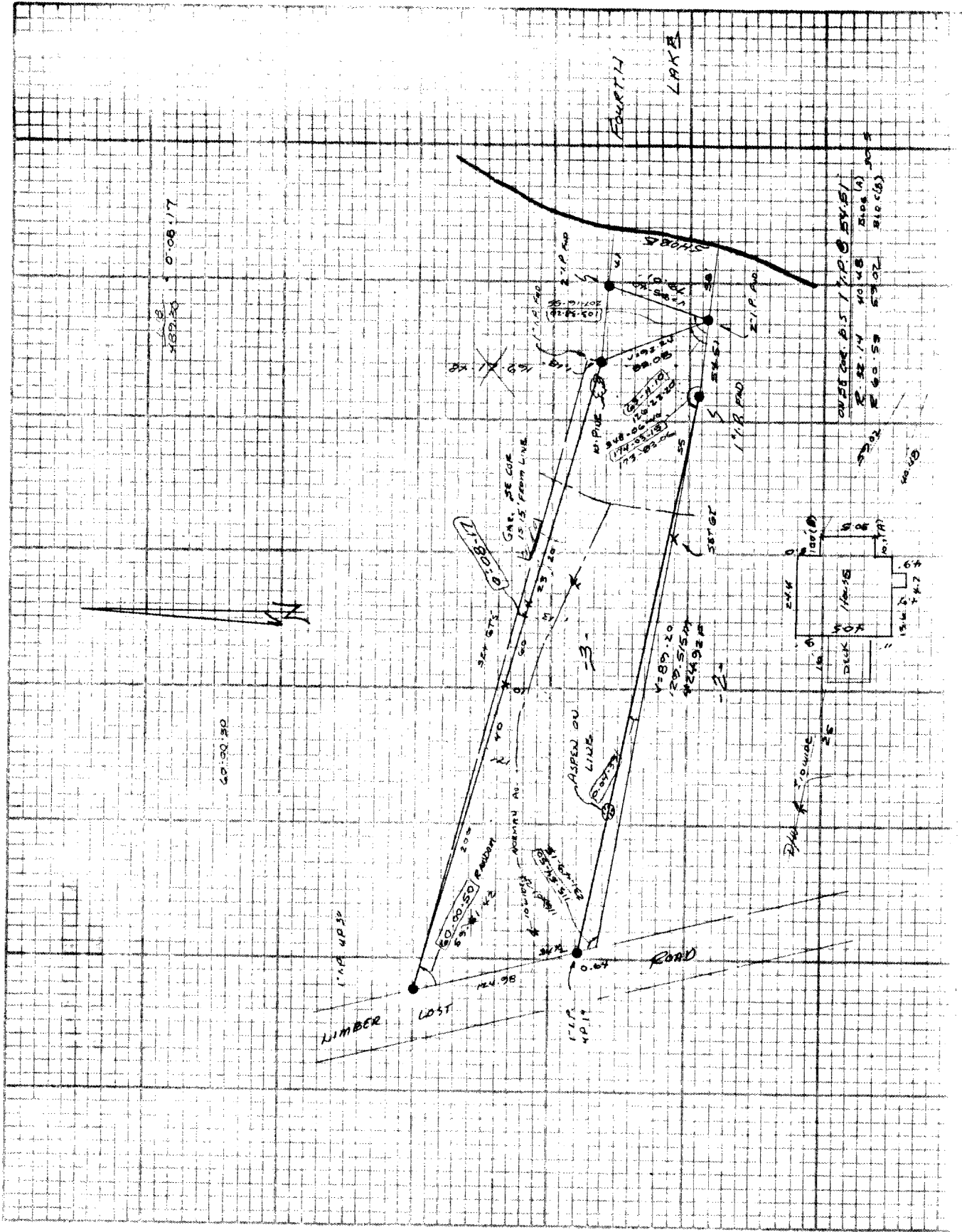
OCS Area #

WILDERNESS SURVEYING, INC

6589 Highway 51 North

P.O. Box 1111

Minocqua, WI 54548



0° 00' 17"

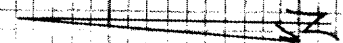
50° 30' 30"

NUMBER LOST

FOURTH LAKE

SHORE

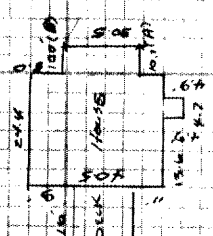
ROAD



ASPEN ON LINE  
33

SHORE  
103.54 ± 0.12  
21.1 P.M.  
1.1 P.M.  
2.1 P.M.  
3.1 P.M.  
4.1 P.M.  
5.1 P.M.  
6.1 P.M.  
7.1 P.M.  
8.1 P.M.  
9.1 P.M.  
10.1 P.M.  
11.1 P.M.  
12.1 P.M.  
1.1 P.M.  
2.1 P.M.  
3.1 P.M.  
4.1 P.M.  
5.1 P.M.  
6.1 P.M.  
7.1 P.M.  
8.1 P.M.  
9.1 P.M.  
10.1 P.M.  
11.1 P.M.  
12.1 P.M.

V=89.20  
R=515.54  
AZ=92.44



OVERSEER'S T.M. 0.5V.51  
R. 22.14 40.48 210.6 (A)  
R. 00.53 53.02 310.0 (B)

