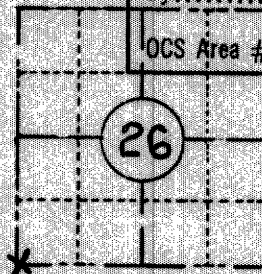


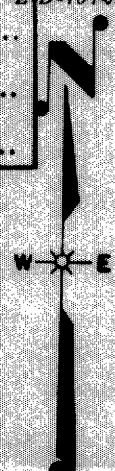
FIELD SURVEY NOTES
PRESERVATION OF LANDMARKS
 (Pursuant to Section 59.635(7) Wisconsin Statutes)

RECEIVED & FILED # **L42.7**
 Oneida County Surveyor's Office
 Date **JUN 23 1980**
 By *J.M.M.*
 OCS Area #

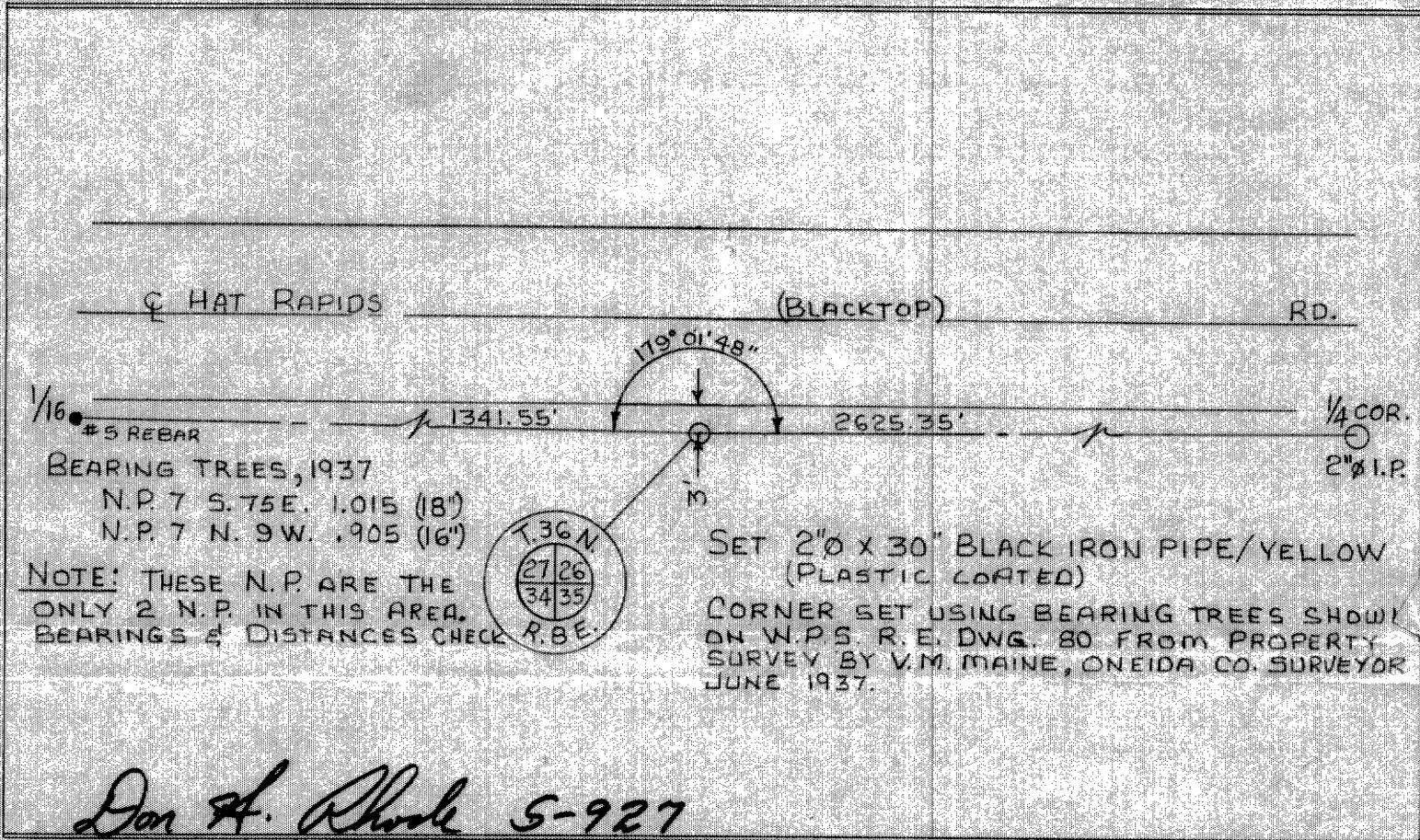
COUNTY ONEIDA		
TOWN CRESENT		
HIGHWAY		
SECTION 26	TOWNSHIP 36 N.	RANGE 8 E.
TYPE OF LANDMARK 2"Ø X 30" BLACK IRON PIPE - (YELLOW PLASTIC COATED)		



LOCATION SKETCH
 (Location of landmark indicated by "x")



This space for copy of field notes or ties to the above described landmarks



FILED UNDER PROJECT NUMBER		
SHC DISTRICT OFFICE NUMBER 7	CITY RHINELANDER	COUNTY ONEIDA
LOCATED OR ESTABLISHED BY NAME ELTON A. PETERSEN		
TITLE SURVEY TECH. DATE 11-13-73		
WISCONSIN PUBLIC SERVICE CORP.		

COUNTY CLERK'S OFFICE	
COUNTY OF Oneida	WISCONSIN } 55
DATE RECEIVED FOR RECORD	DATE COPY SENT TO COUNTY SURVEYOR
SIGNATURE OF COUNTY CLERK <i>Dorothy Neal</i>	