

RECEIVED & FILED # **L43.0** 1534

File Under 36-4

Oneida County Surveyor's Office

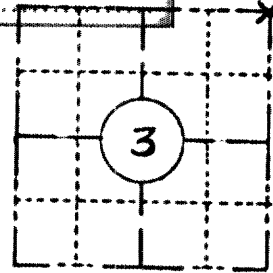
Date: **JUN 27 1988**

Wisconsin Department of Transportation
E-D-707871

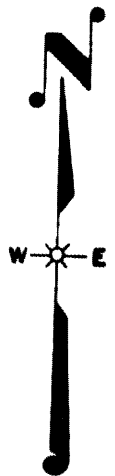
FIELD SURVEY NOTES
PRESERVATION OF LANDMARKS
(Pursuant to Section 59.635(7) Wisconsin Statutes)

OCS Area #.....

COUNTY LINCOLN		
TOWN Somo		
HIGHWAY USH 8		
SECTION 3	TOWNSHIP T 35 N	RANGE R 4 E
TYPE OF LANDMARK BERNTSEN ALUMINUM MONUMENT		



LOCATION SKETCH
(Location of landmark indicated by "x")

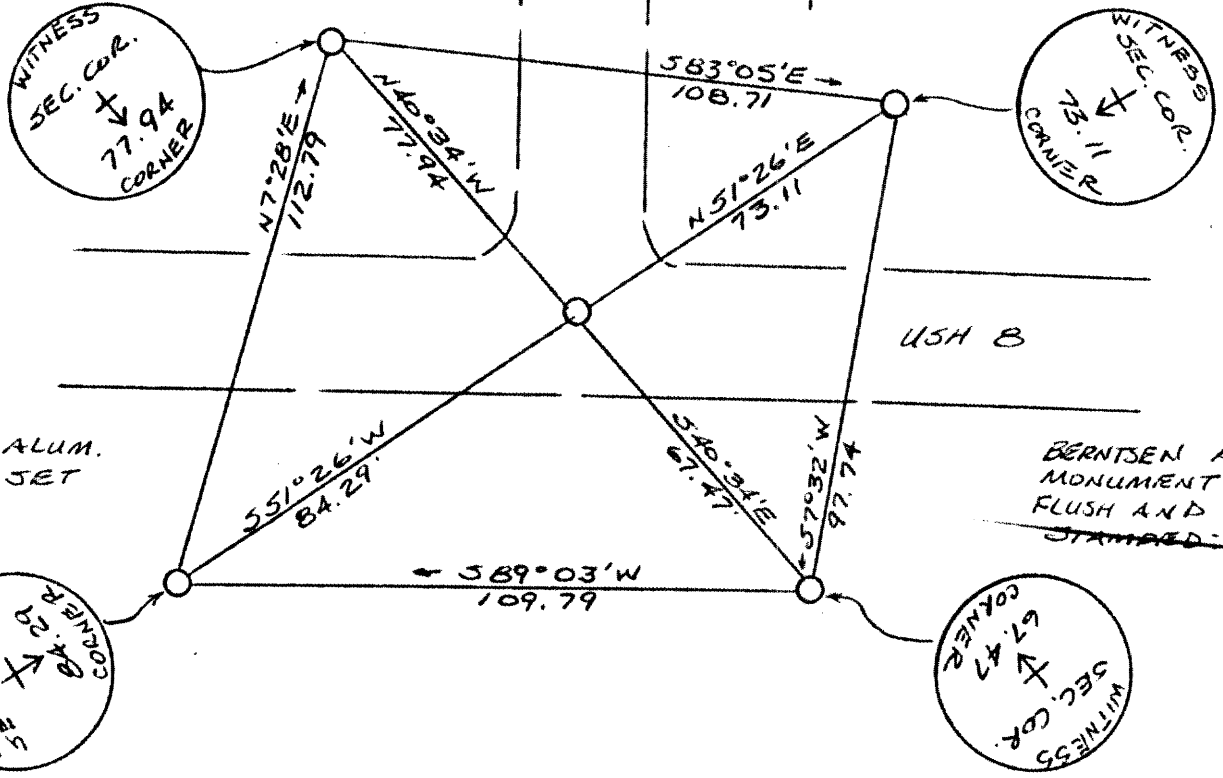


This space for copy of field notes or ties to the above described landmarks

BERNTSEN ALUMINUM MONUMENT SET
FLUSH AND STAMPED:

BERNTSEN. ALUM. MONUMENT SET
FLUSH AND STAMPED:

EAST END ROAD



BERNTSEN ALUM. MONUMENT SET
FLUSH AND STAMPED:

BERNTSEN ALUM. MONUMENT SET
FLUSH AND STAMPED:

FILED UNDER PROJECT		
NUMBER 1580-06-00		
SHC DISTRICT OFFICE NUMBER 7	CITY Rhinelander	COUNTY ONEIDA
LOCATED OR ESTABLISHED BY		
NAME Jack Wallin		
TITLE Survey Crew Chief DATE 6/9/83		

COUNTY CLERK'S OFFICE, COUNTY OF Oneida		WISCONSIN } 55
DATE RECEIVED FOR RECORD 6-13-83	DATE COPY SENT TO COUNTY SURVEYOR 6-13-83	
SIGNATURE OF COUNTY CLERK A.R. McDowell		