

RECEIVED & FILED # 1422

534 File Under 36-4

Oneida County Surveyor's Office

Date JUN. 27 1986

Wisconsin Department of Transportation  
E-D-707-87

FIELD SURVEY NOTES

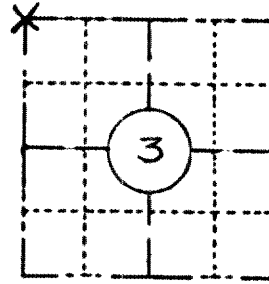
**PRESERVATION OF LANDMARKS**

(Pursuant to Section 59.635(7) Wisconsin Statutes)

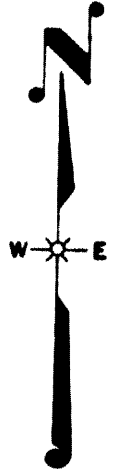
By Statutes

OCS Area #

COUNTY	LINCOLN	
TOWN	Somo	
HIGHWAY	USH 8	
SECTION	TOWNSHIP	RANGE
3	T35N	RAE
TYPE OF LANDMARK		
BERNTSEN ALUMINUM MONUMENT		



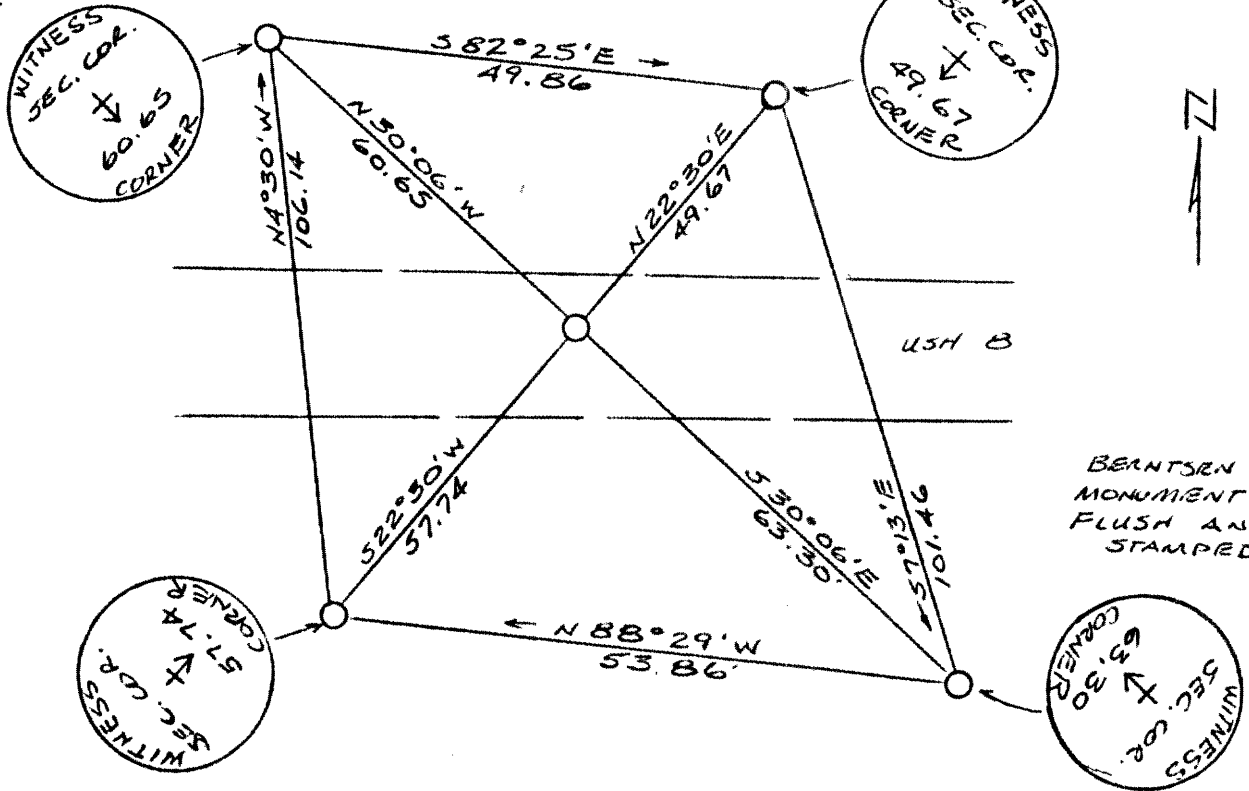
LOCATION SKETCH  
(Location of landmark indicated by "x")



This space for copy of field notes or ties to the above described landmarks

BERNTSEN ALUM.  
MONUMENT SET  
FLUSH AND  
STAMPED:

BERNTSEN ALUM.  
MONUMENT SET  
FLUSH AND STAMPED:



FILED UNDER PROJECT

NUMBER	1580-06-00	
SHC DISTRICT OFFICE NUMBER	CITY	COUNTY
7	Rhinelander	ONEIDA
LOCATED OR ESTABLISHED BY		
NAME Jack Wallin		
TITLE Survey Crew Chief DATE 6/9/83		

COUNTY CLERK'S OFFICE	
COUNTY OF Oneida WISCONSIN } 55	
DATE RECEIVED FOR RECORD	DATE COPY SENT TO COUNTY SURVEYOR
6-13-83	6-13-83
SIGNATURE OF COUNTY CLERK	
A.R. McDonnell	