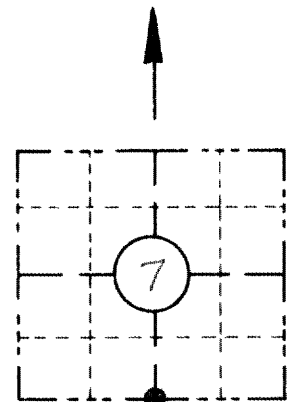


RECORD AND CERTIFICATION OF U.S.  
PUBLIC LAND SURVEY CONTROL STATION  
E-D-716-72

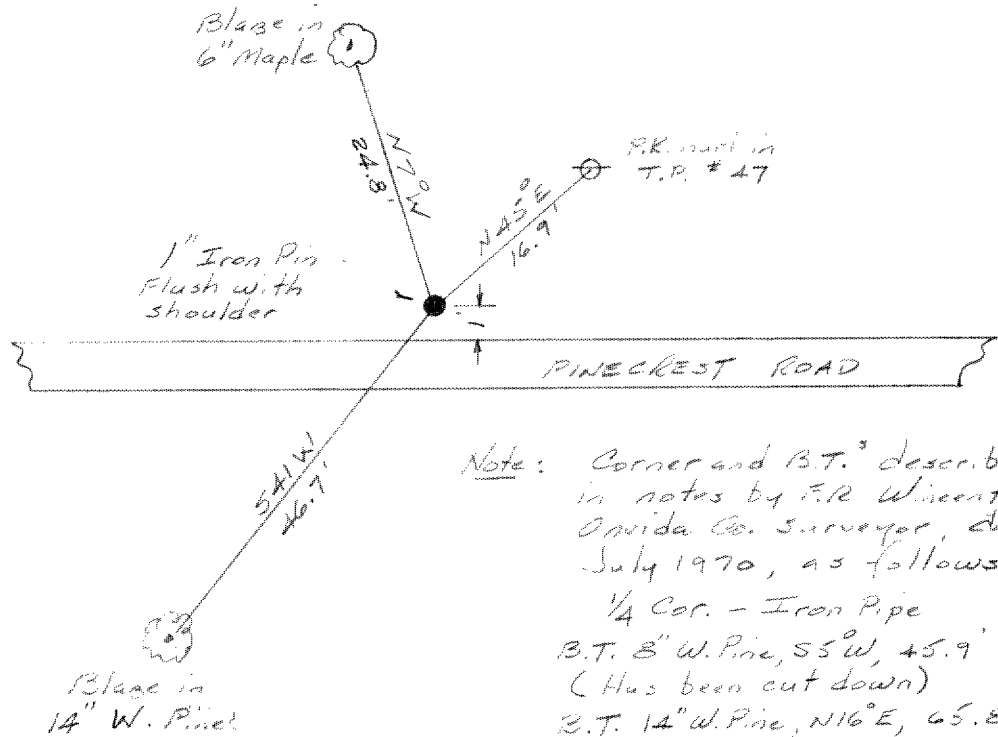
RECEIVED & FILED # **4436**  
Oneida County Surveyor's Office  
State of Wisconsin / Department of Transportation  
Date **JUN 27 1988**  
By *JHM*

District <b>7</b>	Project I. D. <b>1593-0-00</b>	Recovered Located by <b>EUGENE DAHL</b>		
Corner <b>S. 1/4</b>	SECTION <b>7</b>	Township <b>36 N</b>	Range (E,W) <b>9 E</b>	County <b>ONEIDA</b>
Wisconsin Coordinates CORNER	East (X) <b>2,148,518.92</b>	North (Y) <b>163,902.11</b>	Elevation (Z)	Zone <b>N</b>
Control Station Name	East (X)	North (Y)	Elevation (Z)	Zone
Horizontal — <b>NORTH AMERICAN, 1927</b>		CONTROL DATUM Vertical — <b>MEAN SEA LEVEL, 1929 ADJUSTMENT</b>		
Horizontal — <b>2<sup>ND</sup></b> Order		SURVEY CONTROL Vertical — _____ Order		

SKETCH



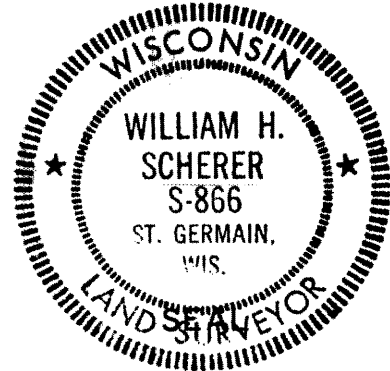
LOCATION SKETCH  
(Location of landmark indicated by "X")



Note: Corner and B.T.'s described in notes by F.R. Wierentzen, Oneida Co. Surveyor, dated July 1970, as follows:  
1/4 Cor. - Iron Pipe  
B.T. 8" W. Pine, S55°W, 45.9' (Has been cut down)  
B.T. 14" W. Pine, N16°E, 45.8' Blazed & scribed (Blown down by windstorm)

I hereby certify that on the 1 day of December 1973, that I did locate the above corner which was evidenced by a 1" Iron Pin flush with the shoulder; I further certify that to perpetuate the location of such corner I did, at the exact location thereof, ~~place a permanent marker consisting of~~ leave the 1" Iron Pin intact.; I further certify that I did establish 3 references ~~or witness monuments~~ consisting of a 12" N. Pine, a 6" Maple, and a Tel. Pole located as shown above;

Note: This work done by Eugene Dahl under the supervision of:



Signature Registered Land Surveyor <i>William H. Scherer</i>	Registration No. <b>S-866</b>	Title <b>Survey Supervisor</b>
---	----------------------------------	-----------------------------------

CORNER  
SECTION  
TOWN  
RANGE