

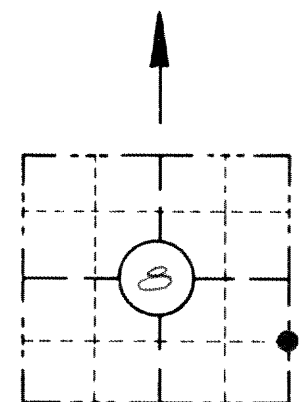
RECORD AND CERTIFICATION OF U.S. PUBLIC LAND SURVEY CONTROL STATION

E-D-716-72

RECEIVED & FILED # **4447**
 Oneida County Surveyor's Office
 State of Wisconsin / Department of Transportation
 Date **JUN 27 1988**
 By **M**

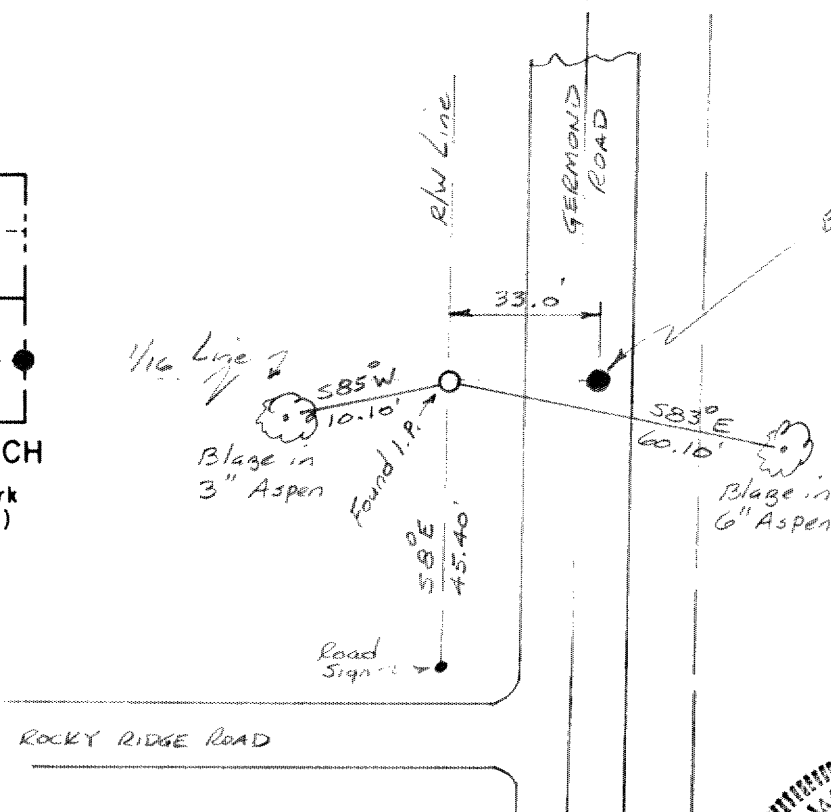
District 7	Project I. D. 1593-0-00	Located by EUGENE DAHL SURVEYOR CHIEF		
Corner S. 1/16 on E. Line SECTION 8	Township 36 N	Range (E,W) 9 E	County ONEIDA	
Wisconsin Coordinates CORNER	East (X) 2,157,062.947	North (Y) 165,382.29	Elevation (Z)	Zone N.
Control Station Name	East (X)	North (Y)	Elevation (Z)	Zone
Horizontal — NORTH AMERICAN, 1927		CONTROL DATUM Vertical — MEAN SEA LEVEL, 1929 ADJUSTMENT		
Horizontal — 2ND Order		SURVEY CONTROL Vertical — _____ Order		

SKETCH



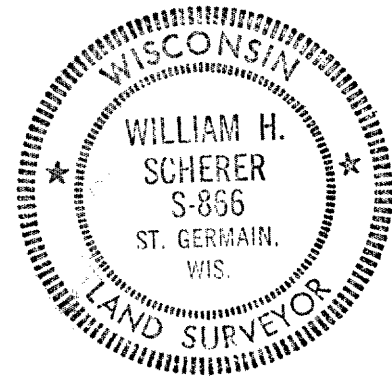
LOCATION SKETCH

(Location of landmark indicated by "X")



Established cor. by setting R.R. spike in road using survey notes by F.R. Wincentzen Oneida Co. Surveyor, dated July 1970. Found hubs on I.P. on west 1/16 line and used 1/16 cor. to west to establish this corner.

I hereby certify that on the 5th day of December 1973, that I did ~~locate~~ establish the above corner which was evidenced by _____; I further certify that to perpetuate the location of such corner I did, at the exact location thereof, place a permanent marker consisting of a Railroad spike in the road surface.; I further certify that I did establish 3 references or ~~witness monuments consisting~~ for the Iron Pipe in the west 1/16 line consisting of a 3" Aspen, a 6" Aspen, and a road sign located as shown above;



SEAL

Note: This work done by Eugene Dahl under the supervision of:

Signature Registered Land Surveyor William H. Scherer	Registration No. S-- 866	Title Survey Supervisor
---	------------------------------------	-----------------------------------

CORNER
SECTION **8**
TOWN **36N**
RANGE **29E**