

RECORD AND CERTIFICATION OF U.S. PUBLIC LAND SURVEY CONTROL STATION

E-D-716-72

State of Wisconsin

RECEIVED & FILED # L458

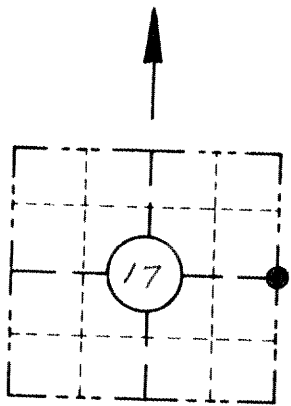
Oncida County Surveyor's Office
Department of Transportation

Date JUN 27 1986

By *M*

District 7	Project I. D. 1593-0-00	Recovered Located by JACK WALLIN		SURVEY DIVISION OF HIGHWAYS	
Corner E. 1/4	SECTION 17	Township 36 N	Range (E,W) 9 E.	County ONEIDA	
Wisconsin Coordinates CORNER		East (X) 2,156,957.490	North (Y) 161,270.448	Elevation (Z)	Zone N.
Control Station Name		East (X)	North (Y)	Elevation (Z)	Zone
Horizontal — NORTH AMERICAN, 1927		CONTROL DATUM		Vertical — MEAN SEA LEVEL, 1929 ADJUSTMENT	
Horizontal — 2 ND Order		SURVEY CONTROL		Vertical — _____ Order	

SKETCH

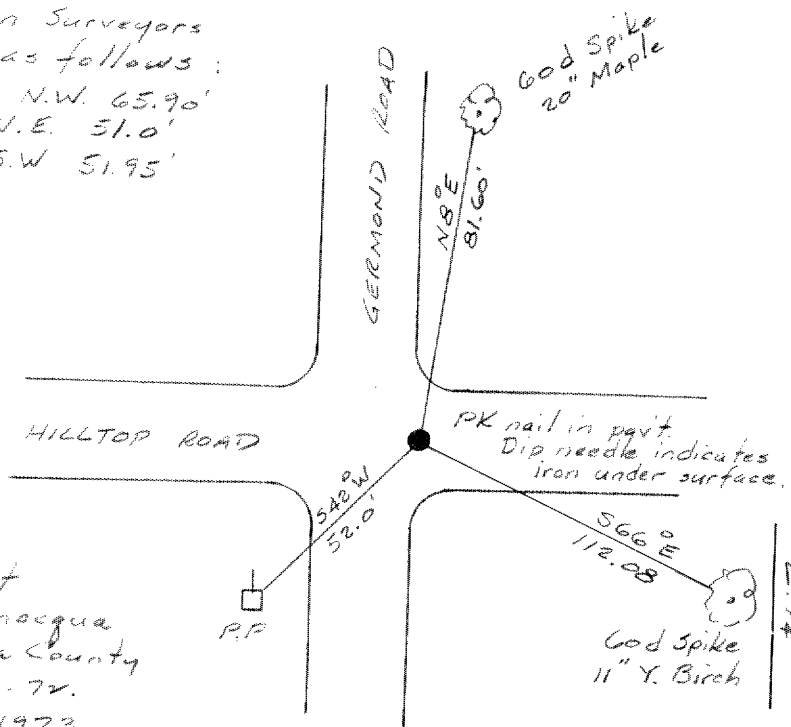


LOCATION SKETCH

(Location of landmark indicated by "X")

Note:

Ties by Inman Surveyors of Minocqua as follows:
R.R. Spike P.P. N.W. 65.90'
Spike in P.P. N.E. 51.0'
PK nail in P.P. S.W. 51.95'



Note:

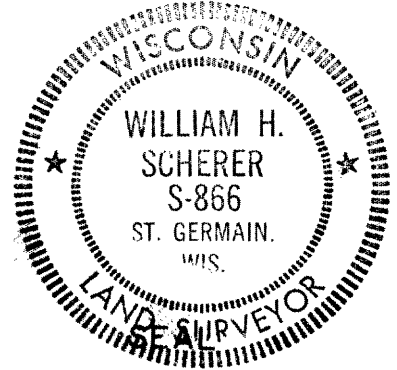
Ties as shown are by Robt. Wiat of Northwoods Surveyors in Minocqua and are on record in the Oneida County Surveyor's office, dated 12-16-72. Corner and ties located in Nov. 1973.

I hereby certify that on the 19th day of November 1973, that I did locate the above corner which was evidenced by a P.K. nail in the pav't. Dip needle indicated iron under surface; I further certify that to perpetuate the location of such corner I did, at the exact location thereof, place a permanent marker consisting of leave the P.K. nail intact.

; I further certify that I did establish 0 references or witness monuments consisting of _____

located as shown above:

Note: All work done by Jack Wallin under the supervision of:



Signature Registered Land Surveyor <i>William H. Scherer</i>	Registration No. S--866	Title Survey Supervisor
---	----------------------------	----------------------------

CORNER
E. 1/4
SECTION
17
TOWN
36 N
RANGE
9 E