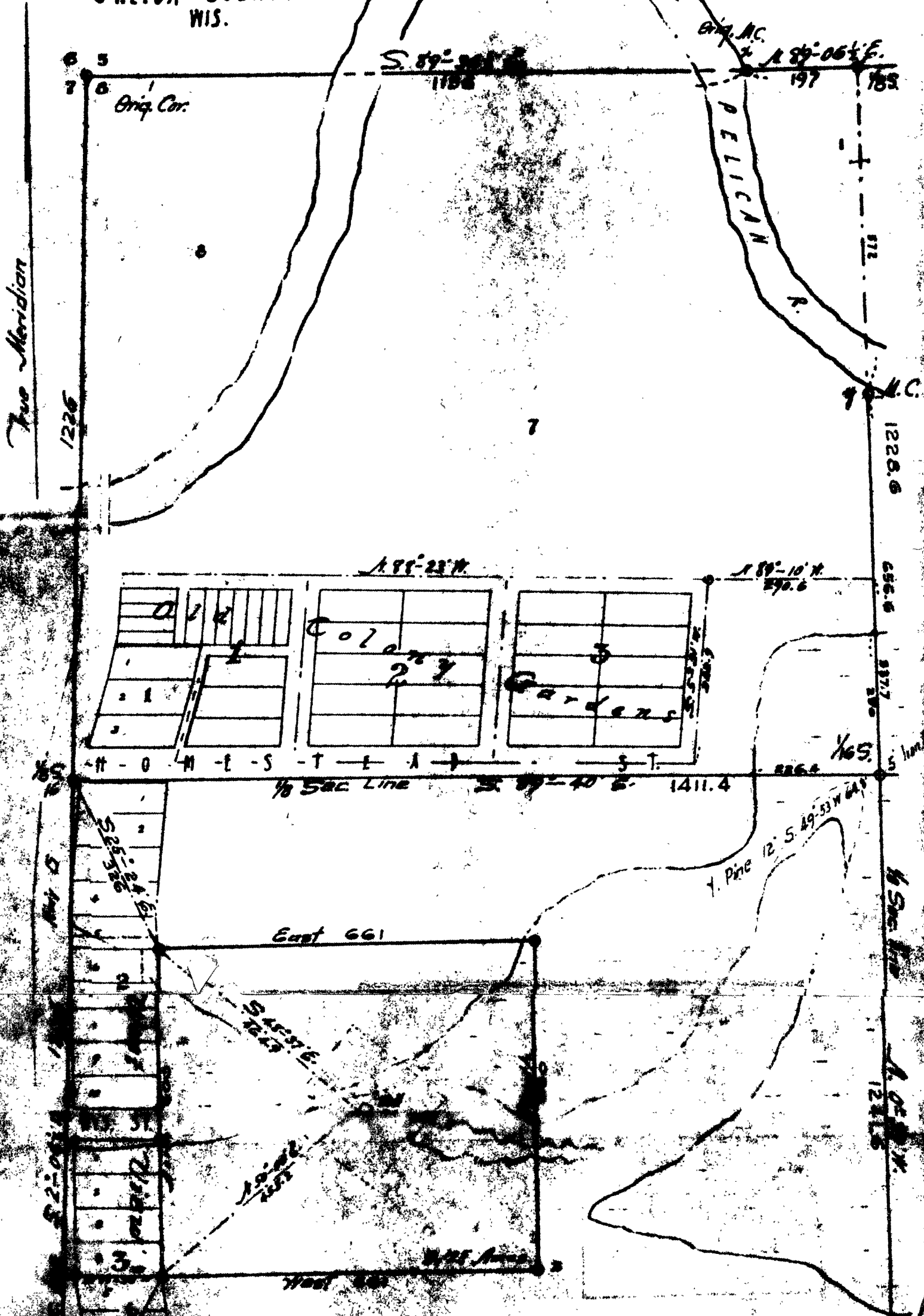


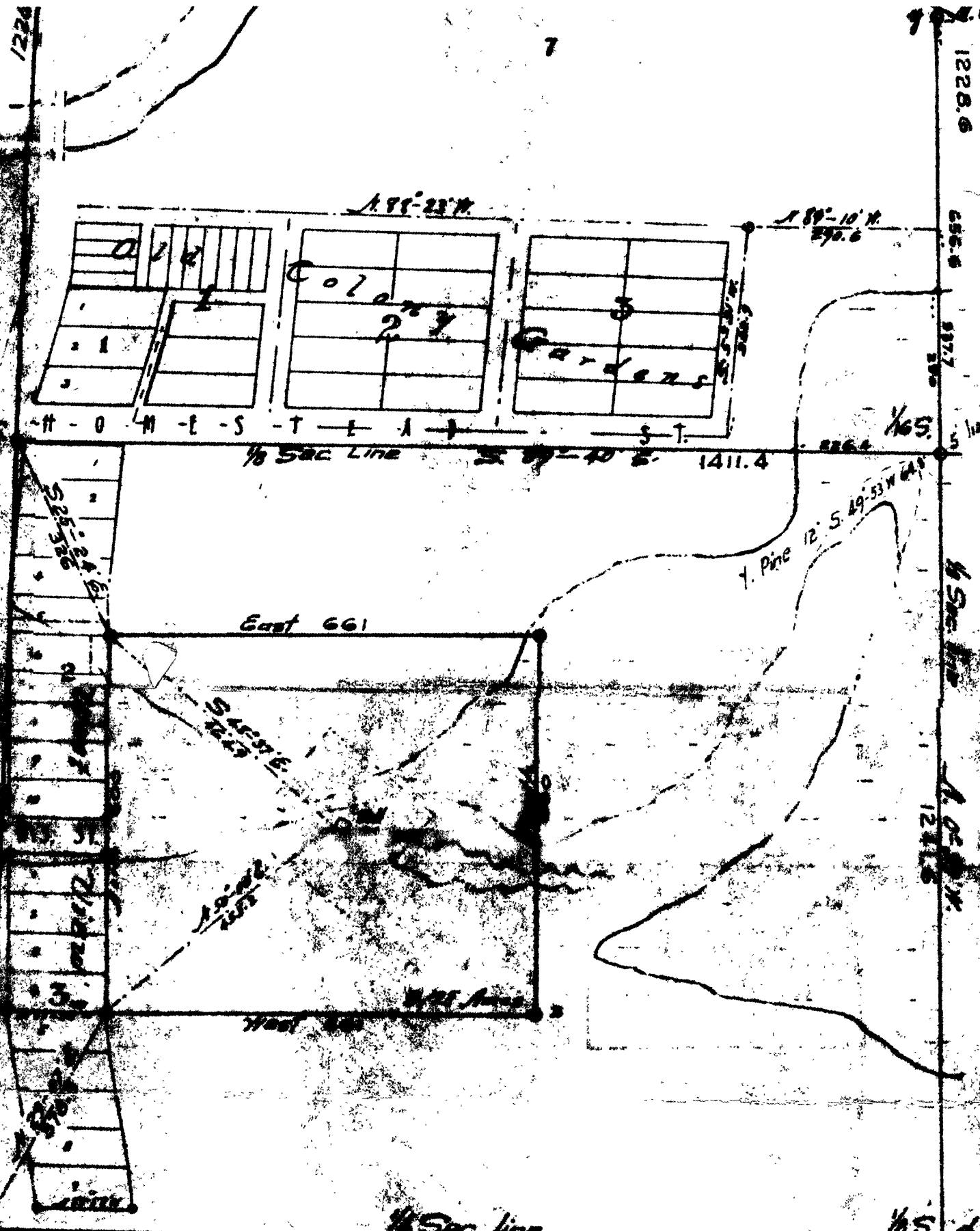
Scale
1 inch = 200 feet

PLAT OF SURVEY

of

The W 1/2 NW 1/4 of Sec. 8
Tp. 36 N. R. 9 E.
ONEIDA COUNTY
WIS.





1/8 Sec line
 843.57
 N 87°-00' E
 1470
 * 135

Bearings to Corners

- 1 - Dorr's stone monument - 61 ft. N. of the Onondaga St. paving
- 0 - Iron Pipe at top of bank

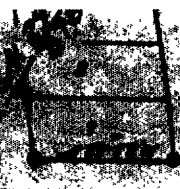
Hemlock 15'	S 64° N 2'	71.3
Grey Boulder	S 45° W 2'	44.9
- d - + on 2x3 boulder

+ on	7x10'	S 47°-00' E	70.
+ -	2x6'	N 41°-20' E	41.
- 6 - Iron Pipe 1' below surface
 Cement block at NW cor cottage foundn - S 65°-51' E 65.
 SE cor. stone foundn - N 73°-30' W 62.7
 Pole = 810 S 65°-41' W 41.8
- 2 - Iron Pipe in E+W fence

Y. Pine 30'	N 66° E 2'	35.6
NW cor. cement footing	S 36° E 2'	26.9
- 4 - Iron Pipe

Elm 9'	N 73°-15' W.	36.7
+ on 3x4' boulder	S 41°-18' E	13.
- 2 - Iron Pipe

Popple 14'	N 4° W	22.5
Soft maple 12'	N 49°-20' E.	15.



1/8 Sec line
 11470
 843.37
 N 87°-00' E

Bearings to Corners

- | | |
|---|----------------------------|
| 1 - Dorr's stone monument - 41 N. of E Oneida St paving | |
| 0 - Iron Pipe at top of bank | 2 - Iron Pipe in E+W fence |
| Hemlock 15' S 66° W 71.3 | Y. Pine 30' N 66° E 35.6 |
| Dry Boulder S 45° W 44.9 | NW cor. cement footing |
| | S 36° E 26.9 |
| 4 - + on 2x5 boulder | |
| + on 7x10' S 47° W 70. | 4 - Iron Pipe |
| + on 2x6' N 41° W 41. | Elm 9' N 73° 15' W 36.7 |
| | + on 3x4' boulder |
| 6 - Iron Pipe 1' below surface | S 41° 18' E 13. |
| Cement block at NW cor | |
| cottage foundn - | z - Iron Pipe |
| S 65° 51' E 65. | Pole 14' N 4° W 22.5 |
| SE cor. stone foundn | Soft maple 12' |
| N 73° 30' W 68.7 | N 49° 20' E 15. |
| Pole # 810 S 65° 40' W 41.8 | |

Surveyor's Certificate

I, Harry C. Hall do hereby certify that in April 1933, at the request of L. A. Leadbetter, I surveyed the exterior boundaries of the West half of the Northwest quarter of Section 8 in Township 36 N. Range 9 E. of 4th P.M. Wis. and established the E+W 1/8 Sec. line therein. That at the request of T.M. Wardwell, City Manager of Rhinelander, I surveyed the 9 acre tract in SW 1/4 NW 1/4 said Sec. 8, surrounding City Well #1 and conveyed by deed recorded Volume 120, page 133. That the map hereon drawn correctly represents my survey (with True Courses from Polaris), with the plats "West View" and "Old Colony Gardens" super-imposed. That I found the old stakes where I have placed the monuments marking the SE cor. Lot 5-Blk. 2 and the SE cor. Lot 4-Blk. 3 of West View. That I accepted the West 1/8 S. cor. on N. line Sec. 8 as established by C. D. Vaughan.

Rhinelander, Wis.
 May 8th 1933

Harry C. Hall
 County Surveyor
 For Oneida County

RHINELANDER, WIS.
 OFFICE OF COUNTY SURVEYOR
 ONEIDA COUNTY

12th day of

Note: The above copy made from Xerox furnished by Robert Winat, of Northwoods Surveyors, pursuant to my enquiry about available information for this area.

FILE IN CURRENT FILE OF PLATS Sept 26, 1972

Herbert Moore
 County Surveyor

SEP 26 1972