

FIELD SURVEY NOTES

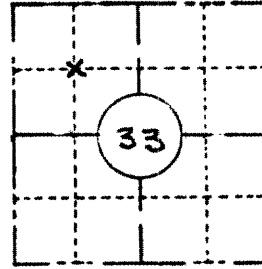
PRESERVATION OF LANDMARKS

(Pursuant to Section 59.635(7) Wisconsin Statutes
E-D-707-69

State of Wisconsin / Department of Transportation

RECEIVED & FILED # 4475
 Oneida County Surveyor's Office
 Date JUN 27 1988
 By M
 OCS Area # _____

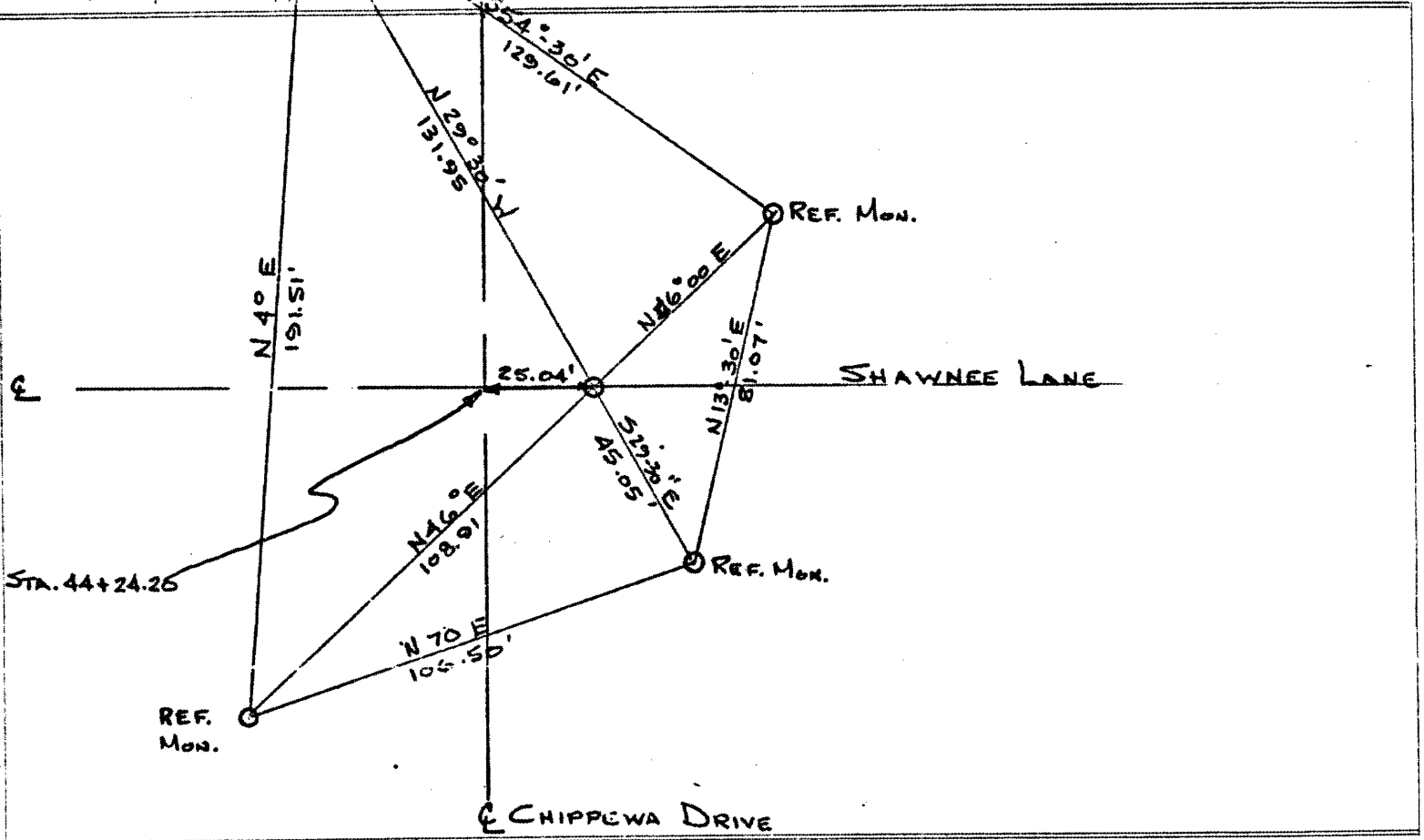
COUNTY		
ONEIDA		
TOWN		
PINE LAKE		
HIGHWAY		
CHIPPEWA DRIVE		
SECTION	TOWNSHIP	RANGE
33	37N	9E
TYPE OF LANDMARK		
REF. Mon.		



LOCATION SKETCH
(Location of landmark indicated by "x")



This space for copy of field notes or ties to the above described landmarks



FILED UNDER PROJECT		COUNTY CLERK'S OFFICE	
9997-02-70		COUNTY OF <u>Oneida</u> WISCONSIN } SS	
DISTRICT OFFICE NUMBER	CITY	COUNTY	DATE RECEIVED FOR RECORD
7	RHINELANDER	ONEIDA	12/27/78
LOCATED OR ESTABLISHED BY		DATE COPY SENT TO COUNTY SURVEYOR	
NAME <u>Am. Jess</u>		12/27/78	
TITLE _____		SIGNATURE OF COUNTY CLERK	
DATE <u>11-13-78</u>		<u>Deborah Neal</u>	