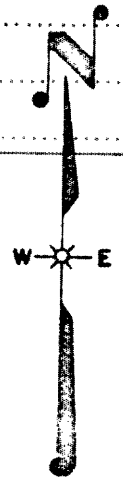


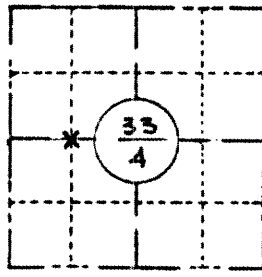
FIELD SURVEY NOTES
PRESERVATION OF LANDMARKS
(Pursuant to Section 59.635(7) Wisconsin Statutes
E-D-707-69

State of Wisconsin / Department of Transportation
Oneida County Surveyor's Office
RECEIVED & FILED #...**4478**...
JUN 27 1988

Date.....
By *m*.....
OCS Area #.....

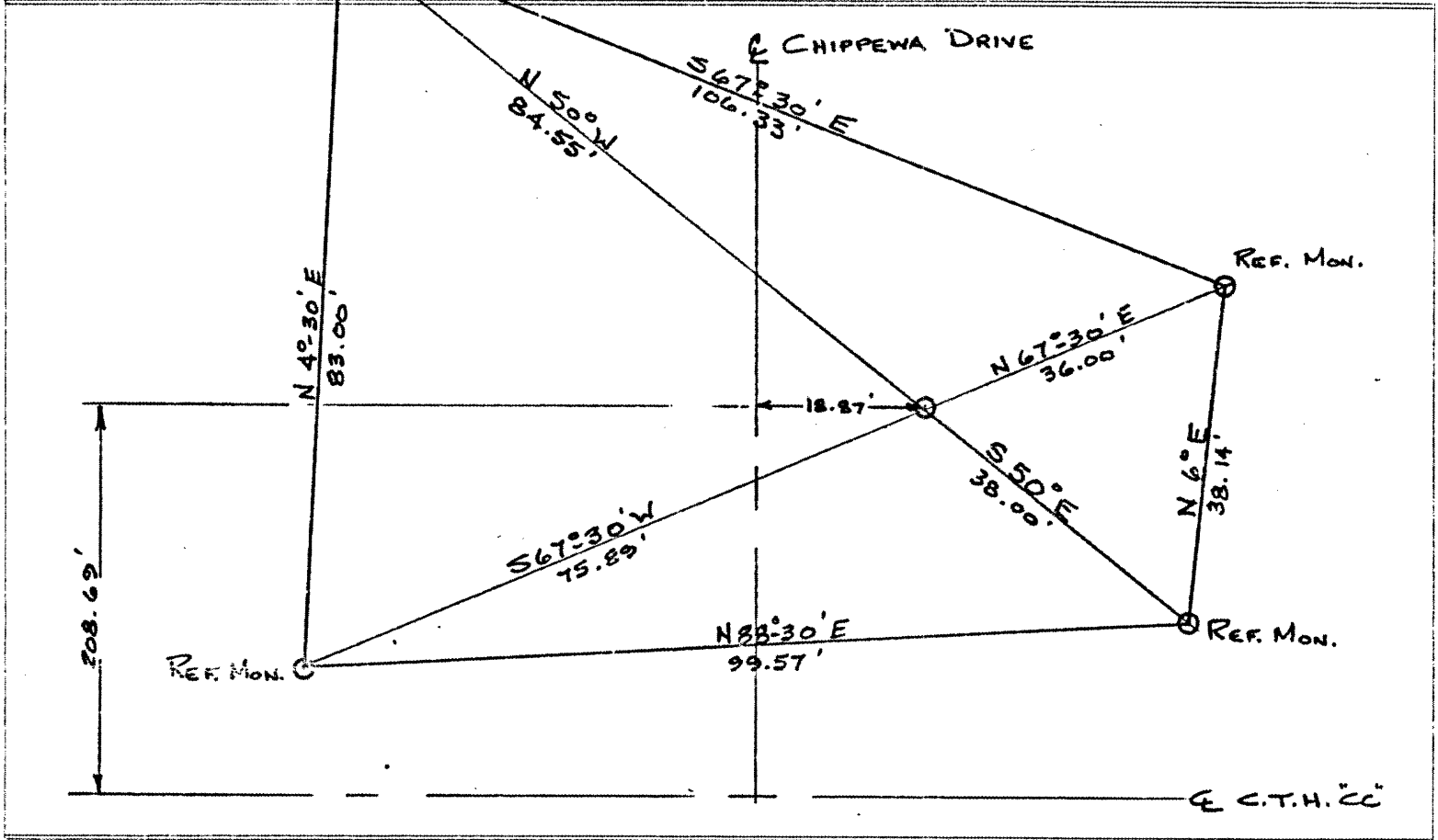


COUNTY		
ONEIDA		
TOWN		
PINE LAKE		
HIGHWAY		
CHIPPEWA DRIVE		
SECTION	TOWNSHIP	RANGE
33	37 N	9 E
TYPE OF LANDMARK		



LOCATION SKETCH
(Location of landmark indicated by "x")

This space for copy of field notes or ties to the above described landmarks



FILED UNDER PROJECT		
9997-02-70		
DISTRICT OFFICE NUMBER	CITY	COUNTY
7	RHINELANDER	ONEIDA
LOCATED OR ESTABLISHED BY		
NAME <i>Ann Nees</i>		
TITLE _____ DATE <i>11-13-78</i>		

COUNTY CLERK'S OFFICE	
COUNTY OF <i>Oneida</i>	WISCONSIN } 55
DATE RECEIVED FOR RECORD	DATE COPY SENT TO COUNTY SURVEYOR
<i>12/27/78</i>	<i>12/27/78</i>
SIGNATURE OF COUNTY CLERK	
<i>Dorothy Neal</i>	