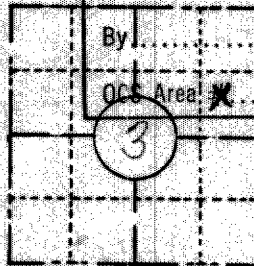


FIELD SURVEY NOTES
PRESERVATION OF LANDMARKS
 (Pursuant to Section 59.635(7) Wisconsin Statutes)

COUNTY <i>ONEIDA</i>		
TOWN <i>LAKE TOMAHAWK</i>		
HIGHWAY <i>S.T.H. 47</i>		
SECTION <i>3</i>	TOWNSHIP <i>T38N</i>	RANGE <i>R7E</i>
TYPE OF LANDMARK <i>LOT CORNER</i>		

RECEIVED & FILED # *L482*
 Wisconsin Department of Transportation
 Oneida County Surveyor's Office
 Date... *JUN 27 1968*
 By... *M*
 OCS Area:

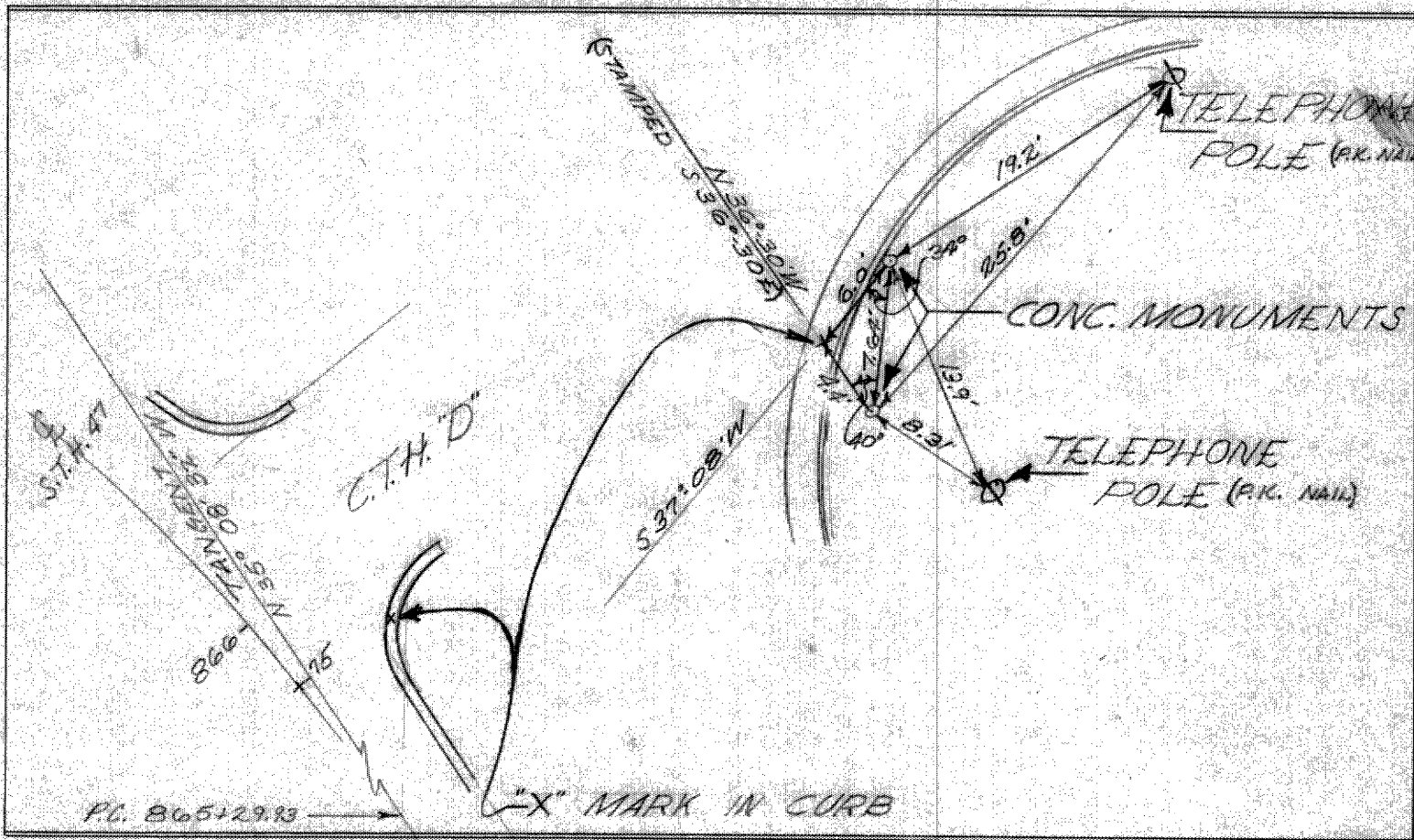


Transportation
E-D-707421



LOCATION SKETCH
 (Location of landmark indicated by "x")

This space for copy of field notes or ties to the above described landmarks



FILED UNDER PROJECT NUMBER <i>SOR 81(8) I.D. 9051-1-10</i>			COUNTY CLERK'S OFFICE COUNTY OF <i>Oneida</i> WISCONSIN } ss	
SHC DISTRICT OFFICE NUMBER <i>7</i>	CITY <i>RHINELANDER</i>	COUNTY <i>ONEIDA</i>	DATE RECEIVED FOR RECORD <i>December 15, 1970</i>	DATE COPY SENT TO COUNTY SURVEYOR <i>December 22, 1970</i>
LOCATED OR ESTABLISHED BY NAME <i>JAMES F. VOBORSKY, P.E.</i>			SIGNATURE OF COUNTY CLERK <i>Elmer Jander</i>	
TITLE <i>PROJECT ENGINEER</i> DATE <i>7-69</i>				