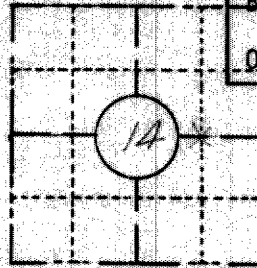


FIELD SURVEY NOTES
PRESERVATION OF LANDMARKS
 (Pursuant to Section 59.635(7) Wisconsin Statutes)

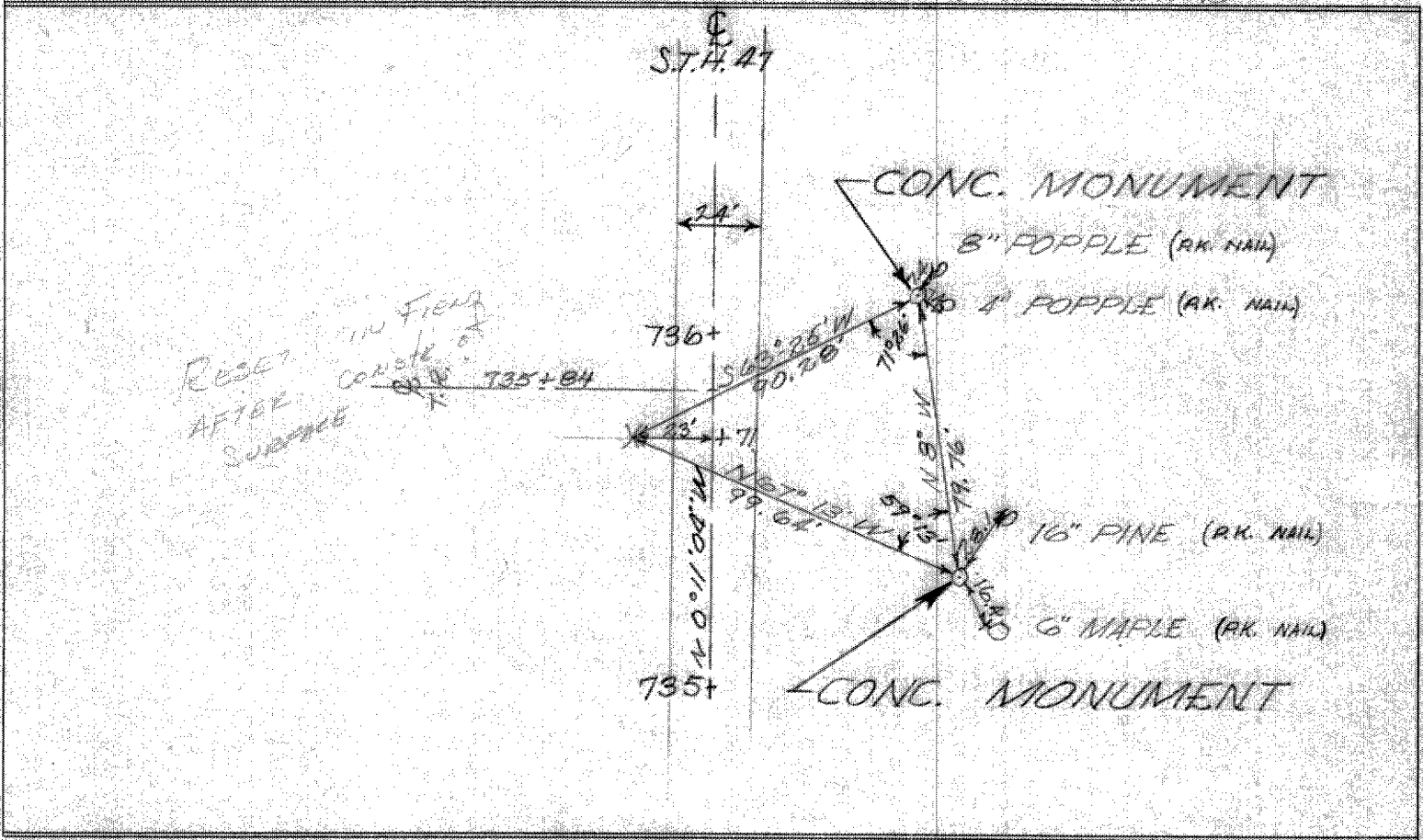
RECEIVED & FILED # L484
 Oneida County Surveyors Office
 E.D. 107871
 Date **JUN 27 1988**
 By M
 DCS Area # _____

COUNTY <u>ONEIDA</u>		
TOWN <u>LAKE TOMAHAWK</u>		
HIGHWAY <u>STN 27</u>		
SECTION <u>14</u>	TOWNSHIP <u>T38N</u>	RANGE <u>R7E</u>
TYPE OF LANDMARK <u>1/4 COR</u>		



LOCATION SKETCH
 (Location of landmark indicated by "x")

This space for copy of field notes or ties to the above described landmarks Reset corner



FILED UNDER PROJECT NUMBER <u>S028(1)</u> ID <u>9051-1-70</u>		COUNTY CLERK'S OFFICE COUNTY OF <u>Oneida</u> WISCONSIN } 55	
SHC DISTRICT OFFICE NUMBER <u>7</u>	CITY <u>RHINELANDER</u>	COUNTY <u>ONEIDA</u>	DATE RECEIVED FOR RECORD <u>December 15, 1970</u>
LOCATED OR ESTABLISHED BY NAME <u>JAMES F. VOBORSKY</u>		DATE COPY SENT TO COUNTY SURVEYOR <u>December 22, 1970</u>	
TITLE <u>PROJECT ENGINEER</u> DATE <u>7-69</u>		SIGNATURE OF COUNTY CLERK <u>Elmer Landeck</u>	