

RECEIVED & FILED # L486

Oneida County Surveyors Office

Date JUN 30 1966

By M

Area #

PAGE

FORM NO. 710

PRESERVATION OF LANDMARKS

SECTION 59,635(7) WISCONSIN STATUTES

COUNTY Oneida

TOWN Minocqua

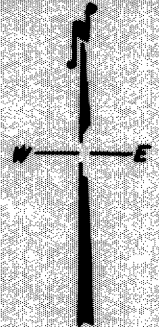
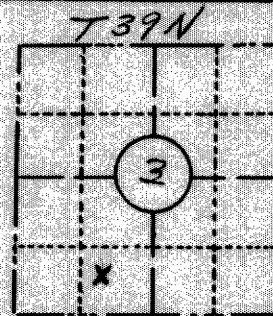
HIGHWAY 70

SECTION NO. 3

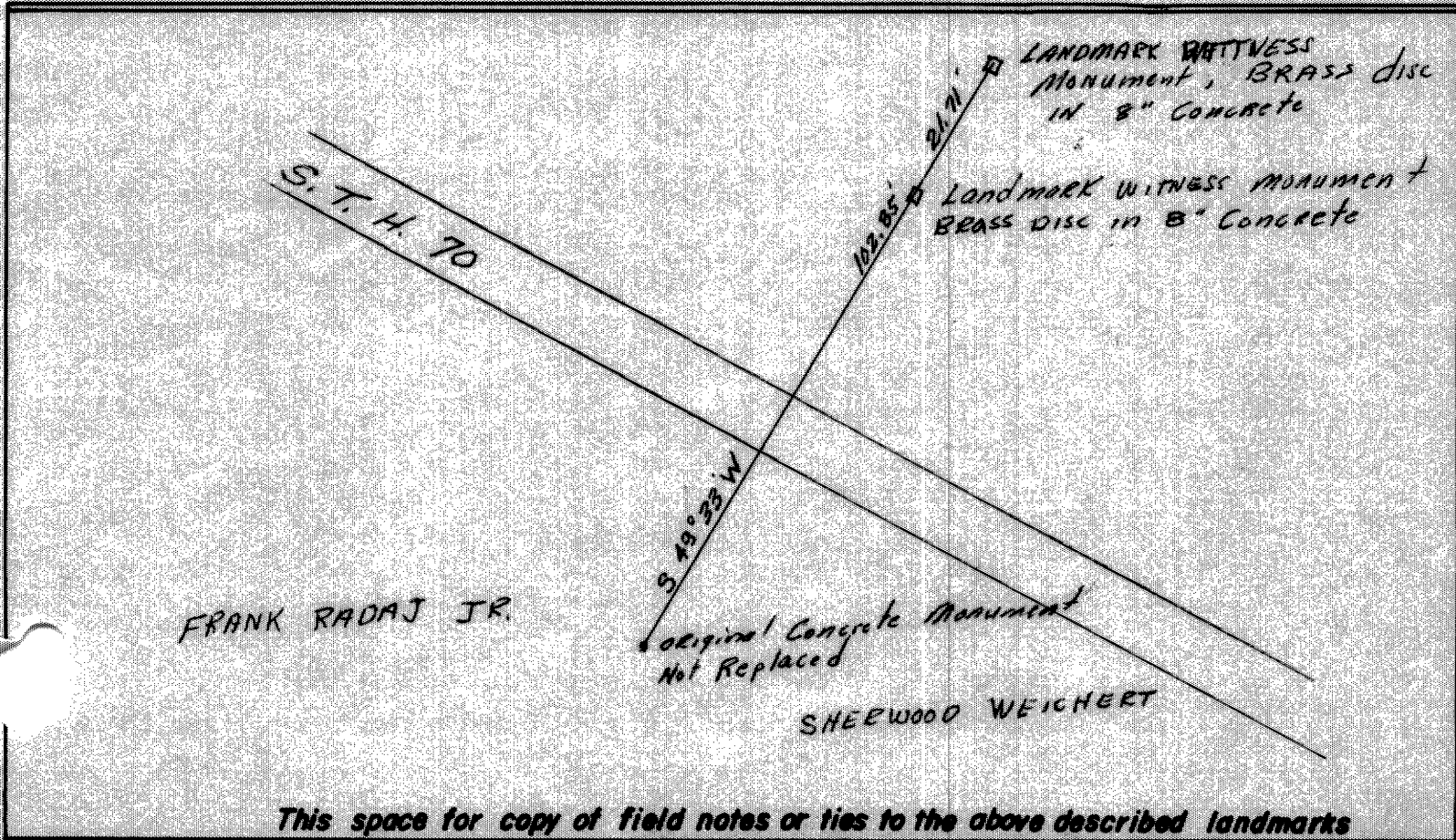
39 N., R 5 E.

TYPE OF LANDMARK Concrete Monument

LOCATION INDICATED ON SKETCH X



LOCATION SKETCH



This space for copy of field notes or ties to the above described landmarks

Field notes or records filed in book no. _____

at the _____ office.

City of _____ County.

Located or established by Duane L. Johnson, 1966

Title _____

County Clerk's Office Oneida County, Wis } ss

Received for record OCT 28 1966, 1966

Copy sent to County Surveyor OCT 28 1966, 1966

J. J. Verago
County Clerk