

RECEIVED & FILED # L487

Oneida County Surveyor's Office

Date JUN 30 1988

By M

DCS Area #

PAGE

FORM NO. 710

PRESERVATION OF LANDMARKS

SECTION 59,635(7) WISCONSIN STATUTES

COUNTY Oneida

TOWN Minocqua

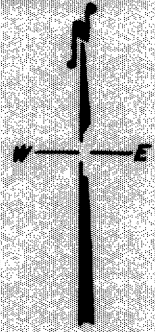
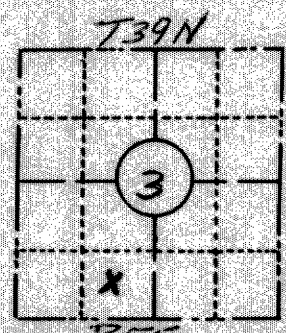
HIGHWAY 70

SECTION NO. 3

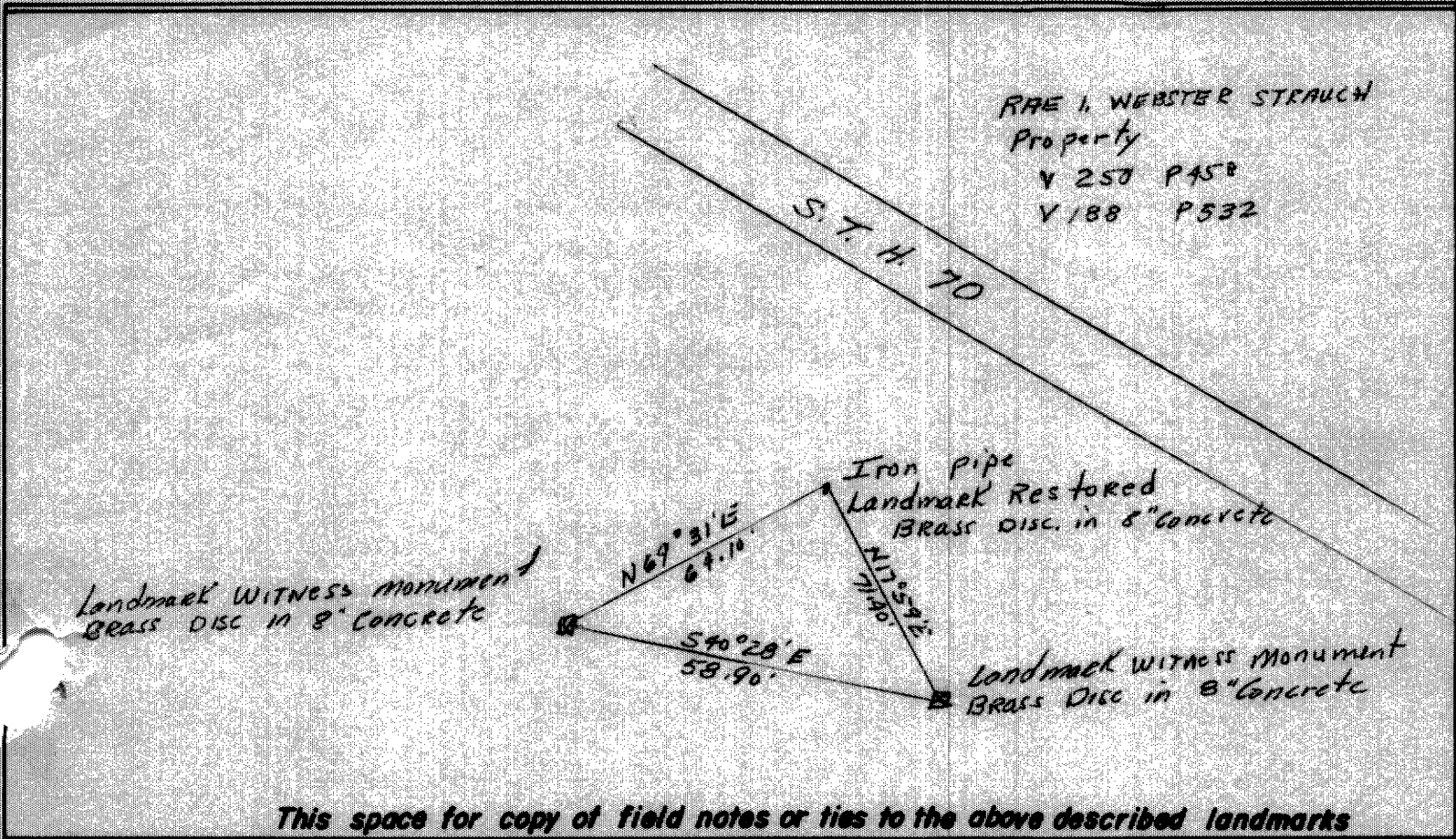
39 N., R 5 E. Gov't Lot 4

TYPE OF LANDMARK Iron Pipe

LOCATION INDICATED ON SKETCH X



LOCATION SKETCH



This space for copy of field notes or ties to the above described landmarks

Field notes or records filed in book no. _____

at the _____ office.

City of _____ County,

Located or established by Duane L. Johnson, 1966

Title _____

County Clerk's Office Oneida County, Wis. } ss

Received for record OCT 28 1966, 1966

Copy sent to County Surveyor OCT 28 1966, 1966

B. Uerage
County Clerk