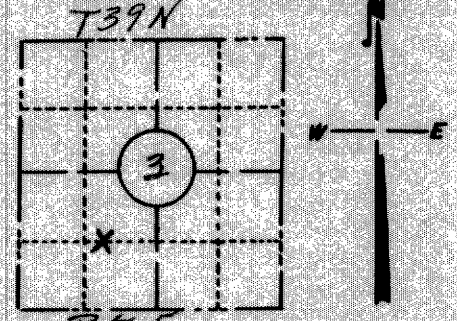


FORM NO. 710

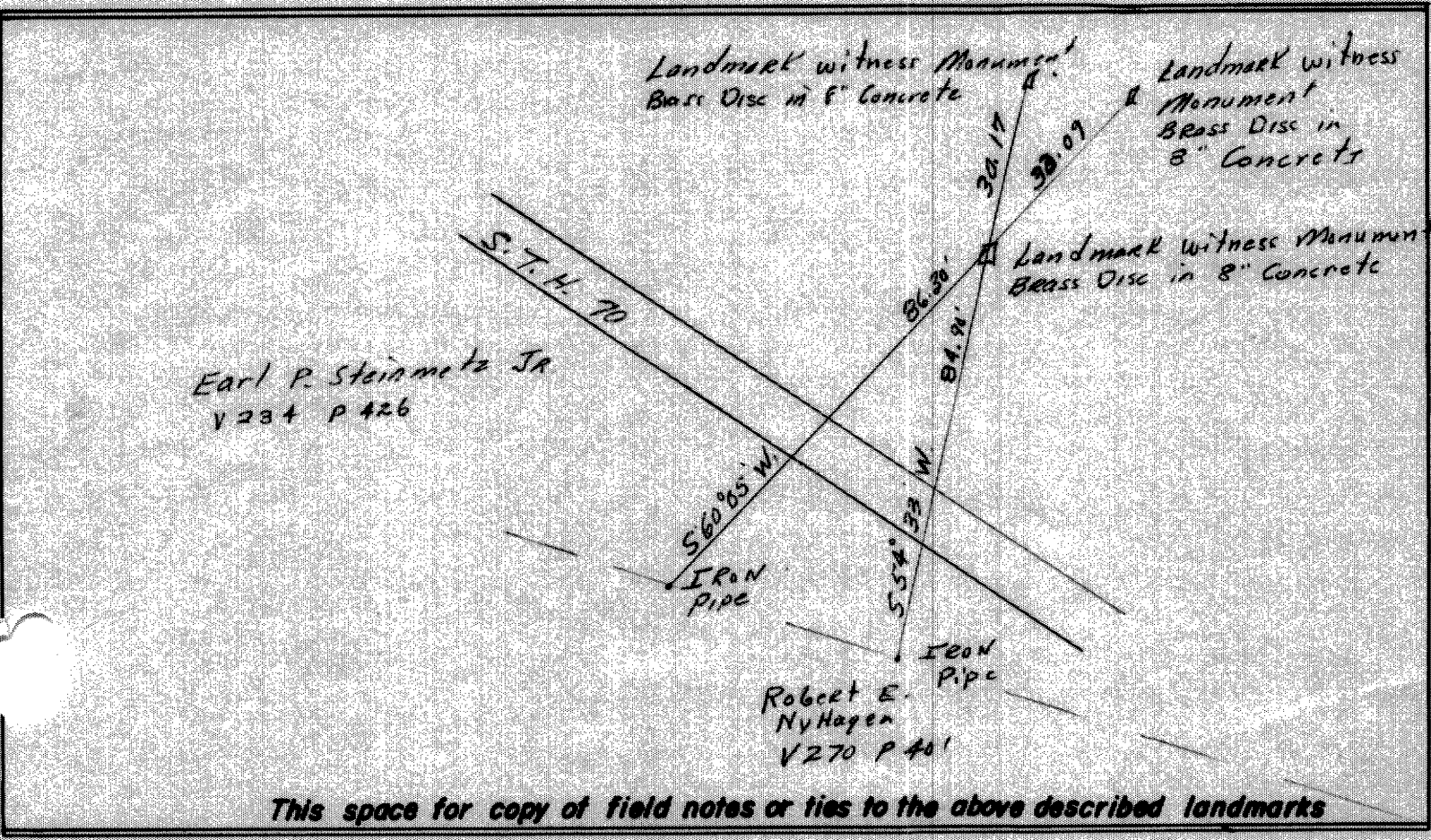
PRESERVATION OF LANDMARKS

RECEIVED & FILED # 491
 Oneida County Surveyor's Office
 Date: JUN 30 1966
 By: M
 DCS Area # _____

SECTION 59,635(7) WISCONSIN STATUTES
 COUNTY ONEIDA
 TOWN MINOCQUA
 HIGHWAY 70
 SECTION NO. 3
39 N., 5 E.
 TYPE OF LANDMARK IRON PIPES
 LOCATION INDICATED ON SKETCH X



LOCATION SKETCH



This space for copy of field notes or ties to the above described landmarks

Field notes or records filed in book no. _____
 at the _____ office.
 City of _____ County.
 Located or established by Duane L. Johnson, 1966
 Title _____
 County Clerk's Office Oneida County, Wis. } ss
 Received for record OCT 28 1966, 19____
 Copy sent to County Surveyor OCT 28 1966, 19____
J.S. Usage
 County Clerk