

PRESERVATION OF LANDMARKS

RECEIVED & FILED # L492
 Oneida County Surveyor's Office
 JUN 30 1966
 Date 7/1
 By _____
 PAGE _____
 OCS Area # _____

SECTION 59,635(7) WISCONSIN STATUTES

COUNTY Oneida

TOWN Minocqua

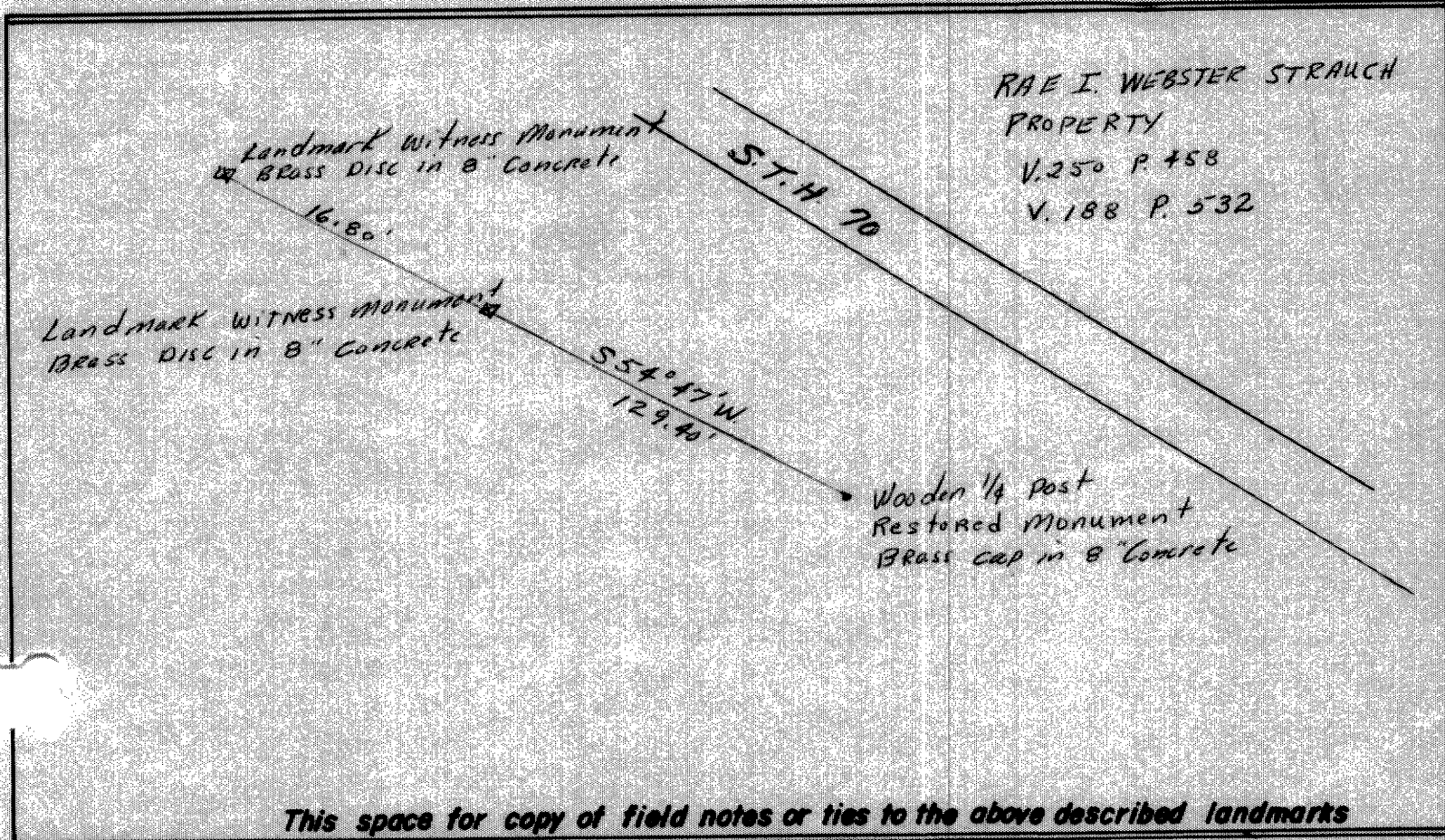
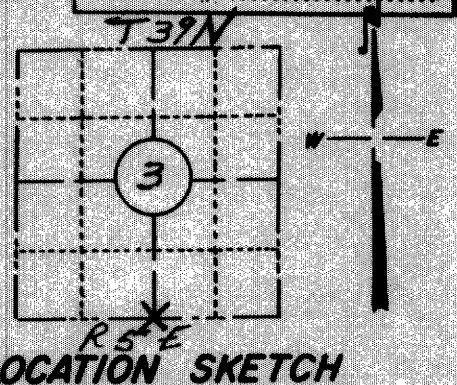
HIGHWAY 70

SECTION NO. 3

39 N., 5 E.

TYPE OF LANDMARK Wooden 1/4 Corner

LOCATION INDICATED ON SKETCH X



Field notes or records filed in book no. _____
 at the _____ office.
 City of _____ County.
 Located or established by Duane L. Johnson, 1966
 Title _____

County Clerk's Office _____ Oneida County, Wis. } ss
 Received for record _____ OCT 28 1966, 19_____
 Copy sent to County Surveyor _____ OCT 28 1966, 19_____

 County Clerk