

FORM NO. 710

# PRESERVATION OF LANDMARKS

RECEIVED & FILED # L496  
 Oneida County Surveyor's Office  
 Date JUN 30 1966  
 By M  
 OCS Area # \_\_\_\_\_

PAGE \_\_\_\_\_

SECTION 59,635(7) WISCONSIN STATUTES

COUNTY ONEIDA

TOWN MINOCQUA

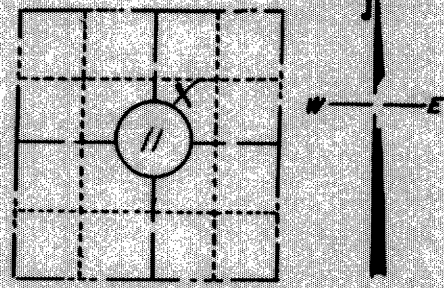
HIGHWAY 70

SECTION NO. 11

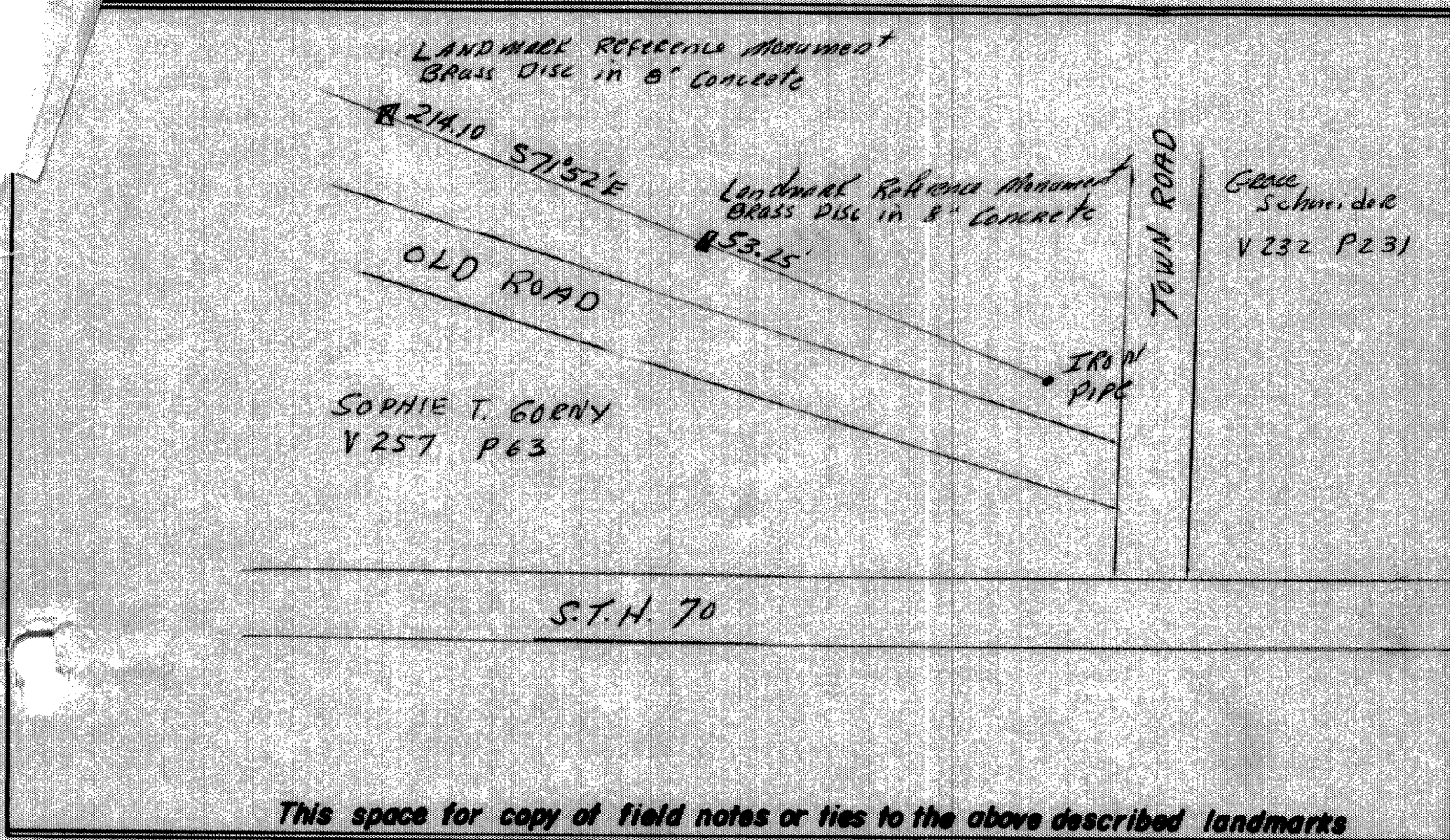
29 N., R 5 E. SW-NW

TYPE OF LANDMARK Iron pipe

LOCATION INDICATED ON SKETCH X



LOCATION SKETCH



This space for copy of field notes or ties to the above described landmarks

Field notes or records filed in book no. \_\_\_\_\_

at the \_\_\_\_\_ office.

City of \_\_\_\_\_ County.

Located or established by Dwane L. Johnson, 1966

Title \_\_\_\_\_

County Clerk's Office Oneida County, Wis. } ss

Received for record OCT 28 1966, 1966

Copy sent to County Surveyor \_\_\_\_\_, 1966

J.B. Verage  
County Clerk

OCT 28 1966