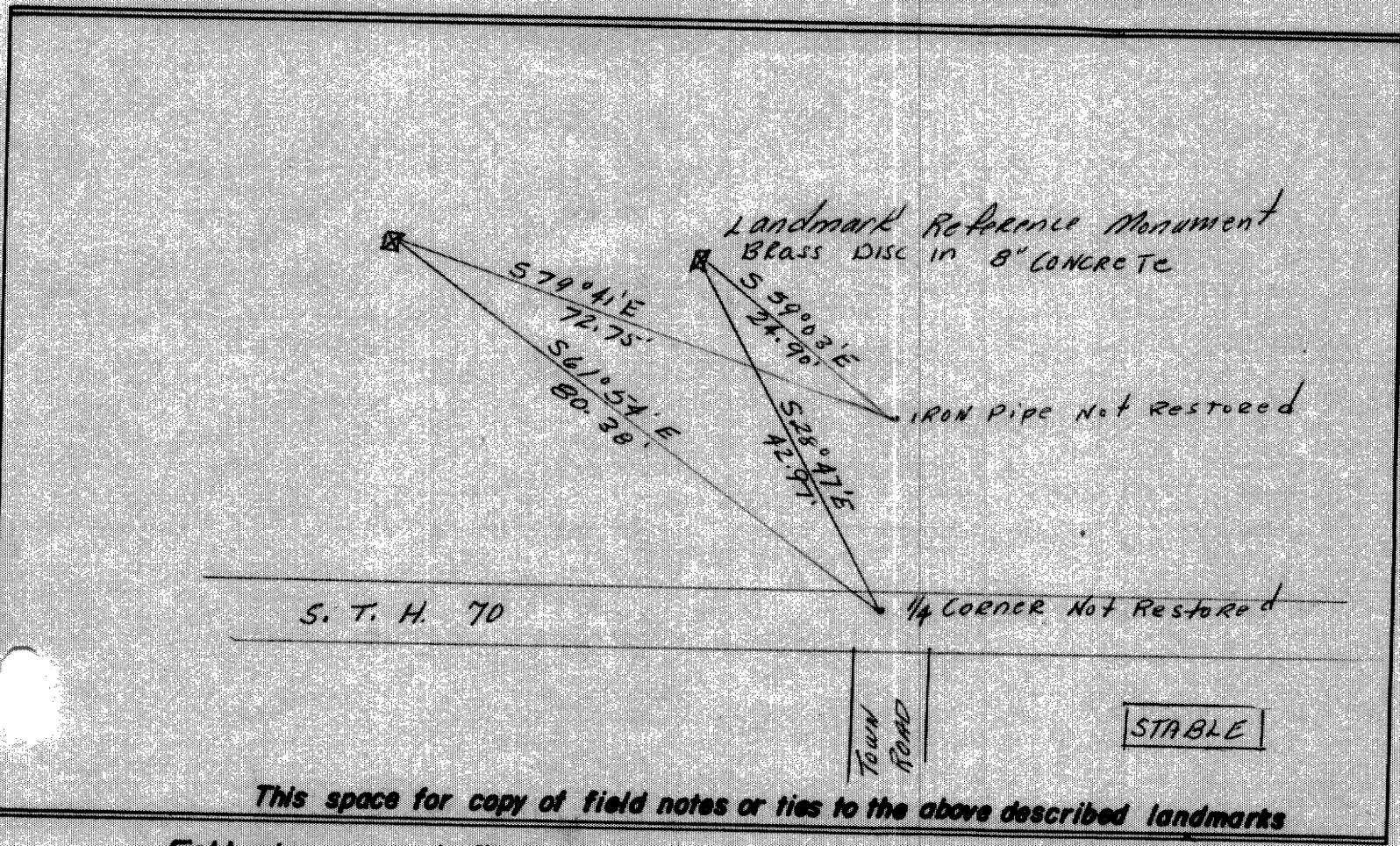
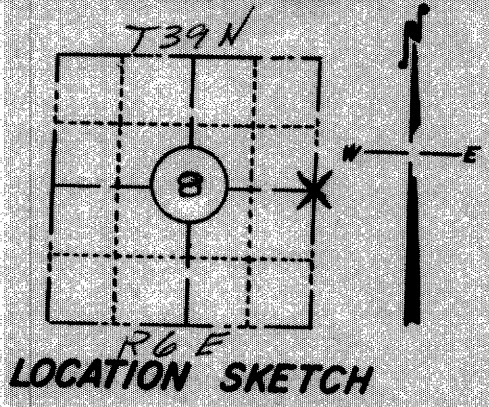


RECEIVED & FILED # L500  
 Oneida County Surveyor's Office  
 Date JUN 30 1966  
 By M  
 OCS Area # \_\_\_\_\_

FORM NO. 710  
**PRESERVATION OF LANDMARKS**

PAGE \_\_\_\_\_

SECTION 59,635(7) WISCONSIN STATUTES  
 COUNTY Oneida  
 TOWN Minongua  
 HIGHWAY 70  
 SECTION NO. 819  
T 29 N., R 6 E. 1/4 Coenee  
 TYPE OF LANDMARK Iron Pipe in old Road  
 LOCATION INDICATED ON SKETCH X



This space for copy of field notes or ties to the above described landmarks

Field notes or records filed in book no. \_\_\_\_\_  
 at the \_\_\_\_\_ office.  
 City of \_\_\_\_\_ County.  
 Located or established by Duane L. Johnson, 1966  
 Title \_\_\_\_\_  
 County Clerk's Office Oneida County, Wis. } ss  
 Received for record OCT 28 1966, 19\_\_\_\_  
J.B. Verage  
 County Clerk  
 Copy sent to County Surveyor \_\_\_\_\_, 19\_\_\_\_  
OCT 28 1966